







PLATFORM·B⁺

MIDI/Audio control surface expander for Platform B+



	<p>CAUTION</p> <p>RISK OF ELECTRIC SHOCK DO NOT OPEN RISQUE DE CHOC ELECTRIQUE NE PAS OUVRIR</p> <p>CAUTION: TO REDUCE THE RISK OF ELECTRIC SHOCK DO NOT REMOVE COVER (OR BACK) NO USER-SERVICEABLE PARTS INSIDE REFER SERVICING TO QUALIFIED PERSONNEL</p> <p>ATTENTION: POUR EVITER LES RISQUES DE CHOC ELECTRIQUE: NE PAS ENLEVER LE COUVERCLE. AUCUN ENTRETIEN DE PIECES INTERIEURES PAR L'USAGER. CONFIER L'ENTRETIEN AU PERSONNEL QUALIFIE.</p> <p>AVIS: POUR EVITER LES RISQUES D'INCENDIE OU D'ELECTROCUTION, N'EXPOSEZ PAS CET ARTICLE A LA PLUIE OU A L'HUMIDITE</p>		 	<p>The lightning flash with arrowhead symbol within an equilateral triangle is intended to alert the user to the presence of uninsulated dangerous voltage within the product's enclosure, that may be of sufficient magnitude to electric shock to persons. Le symbol clair avec point de flèche à l'intérieur d'un triangle équilatéral est utilisé pour avertir l'utilisateur de la présence à l'intérieur du coffret de voltage dangereux non isolé d'ampleur suffisante.</p> <p>The exclamation point within an equilateral triangle is intended to alert the user of the presence of important operating and maintenance (servicing) instructions in the literature accompanying the appliance. Le point d'exclamation à l'intérieur d'un triangle équilatéral est employé pour avertir les utilisateurs de la présence d'instructions importantes pour le fonctionnement et l'entretien (service) dans le livret d'instruction accompagnant l'appareil.</p>
---	---	---	---	--

Important Safety Instructions

1. Read this manual thoroughly before using this unit.
2. Keep this manual for future reference.
3. Take notice of and comply with all warnings included in the user's manual or indicated on the appliance.
4. Follow all instructions included in this manual.
5. Do not expose this unit to rain or moisture. Avoid having water or other liquids spilled on this unit.
6. When cleaning the cabinet or other parts of this appliance, use only a dry or slightly damp soft cloth.
7. Do not block any ventilation openings or interfere with the proper ventilation of this unit. Install in accordance with the manufacturer's instructions.
8. Do not use or store near any heat sources such as radiators, heat registers, stoves, or other heat-producing appliances.
9. Do not interfere with the safety purpose of the polarized or grounding-type plug. A polarized plug has two blades with one wider than the other. A grounding-type plug has two blades and a third grounding prong. These are designated for your safety. If the provided plug does not fit into your outlet, consult an electrician.
10. Protect the power cord from being walked on or otherwise damaged by items placed on or against them. Particular attention should be given to the plugs, receptacles, and the point where the cord exits the appliance.
11. To avoid the risk of electrical shock, do not touch any exposed wiring while the unit is in operation.
12. Only use attachments/accessories specified by the manufacturer.
13. Unplug this unit and all connected electrical equipment during lightning storms or when left unused a long period of time.
14. Refer all servicing to qualified service personnel. Servicing is required when the appliance has been damaged in any way or fails to operate normally.

WARNING: To reduce the risk of fire or electric shock, do not expose this unit to rain or moisture

Contents

Introductions	4
What's in the package?	4
Register your ICON ProAudio product to your personal account	5
Features	6
Top Panel Layout.....	7
Rear Panel Layout	12
Getting Started	13
(Connected with Platform M+ and Platform X+ (1 - 3units)).....	13
Cubase	17
Pro Tools.....	19
Logic pro.....	20
Ableton Live.....	22
Getting Started (Connected with Platform M+).....	23
Connecting Your Platform B+ Controller.....	23
Cubase	25
Nuendo	26
Logic Pro	27
Samplitude.....	28
Bitwig	30
Reason	31
Reaper.....	32
Studio One.....	33
Ableton Live.....	34
Pro Tools.....	35
Audition.....	36
Sonar	37
Getting Started (Standalone).....	39
Connecting Your Platform B+ Controller.....	39
Cubase	41
Nuendo	42
Logic Pro	43
Samplitude.....	44
Bitwig	46
Reason	47
Reaper.....	48
Studio One.....	49
Ableton Live.....	50
Pro Tools.....	51
Audition.....	52
Sonar	53
Download the Mac iMap from your Personal User Page at www.iconproaudio.com	55
Installing iMap™ Software for Windows	56
Assigning DAW Mode (Mackie Control/HUI) or Defining MIDI Functions with iMap™	58
Select User define	58
Assigning DAW Mode (Mackie control/LogicPro/HUI) Using iMap™	59
Assigning MIDI Messages in User-Defined Mode Using iMap™	61
Control Element Setup in User-Defined Mode	63
Other Functions in iMap™	64
Firmware upgrade	65
Restore the factory default settings.....	68
Specifications	69
Services.....	70

Introductions

Thank you for purchasing the ICON ProAudio Platform B+ Midi/Audio control surface. We sincerely trust this product will provide years of satisfactory service, but if anything is not to your complete satisfaction, we will endeavor to make things right.

In these pages, you'll find a detailed description of the features of the Platform B+, as well as a guided tour through its front and rear panels, step-by-step instructions for their setup and use, and full specifications.

Please register the product on our website at the below link
[www. iconproaudio.com/registration](http://www.iconproaudio.com/registration):

Please follow the step by step procedures. Start by inputting the device's serial number as well as your personal information, etc. By registering your product online, you will be entitled to service and after-sales support at our Help Center by visiting our website at **www.iconproaudio.com**. Also, all the registered products under your account will be listed on your personal product page where you will find updated information such as firmware/driver upgrades, software bundles, user manual downloads, etc. for your device.

As with most electronic devices, we strongly recommend you retain the original packaging. In the unlikely event the product must be returned for servicing, the original packaging (or reasonable equivalent) is required.

With proper care and adequate air circulation, your Platform B+ will operate without any trouble for many years.

What's in the package?

- Platform B+ USB-MIDI Controller x 1pc
- Quick Start Guide x 1
- USB2.0 Cable x 1
- AC adaptor x 1pc

Register your ICON ProAudio product to your personal account

1. Check serial number of your device

Please go to [http:// iconproaudio.com/registration](http://iconproaudio.com/registration) or scan the QR code below.



Input your device's serial number and the other information on the screen. Click "Submit".

A message will pop up showing your device information such as model name and its serial number - Click "Register this device to my account" or if you see any other message, please contact our after-sales service team

2. Log in to your personal account page for existing user or sign up for new user

Existing user: Please log into your personal user page by inputing your user name and password.

New user: Please click "Sign Up" and fill in all the information.

3. Download all useful materials

All your registered devices under your account will show on the page. Each product will be listed along with all its available files such as drivers, firmware, user manual in different languages and bundled software etc. for download. Please make sure you have download the necessary files such as driver before you begin device installation.

Top Panel Layout



Note: To unleash the full potential of Platform B+, it must be connected to and used with Platform M+. The following functions require the use of both units.

Note: Function operates slightly difference between DAWs. Please refer to your DAW manual for each function and overlap the provided labeling template according to your current using DAW. The following description is based on the functions that operate in Apple Logic.

Select Logic Pro mode by pressing the “LogicPro” button once you turn on the device. Please note that if your Platform M+ has LogicPro mode selected, Platform B+ will automatically switch to LogicPro mode. Then you may place your LogicPro silicon overlay onto your Platform B+.

(Tip: Platform series support MackieControl and HUI Universal emulation. So, they will support any DAW that has MCP or HUI protocol build-in. Please use the “User-Define” overlay to label all the button functions if your DAW silicon overlay is not included.)

1) DAW mode select section

Select “MCP”, “HUI” or “LogicPro” on the Platform M+ according to your DAW. Below please find the list showing the appropriate mode select for different DAW.

1. Nuendo/Cubase – MCP
2. Digital Performer – MCP
3. FL Studio – MCP
4. SamplitudePro – MCP
5. Reaper – MCP
6. Studio One – MCP
7. Bitwig – MCP
8. Reasons – MCP
9. Sonar – MCP
10. Audition – MCP
11. Ableton Live – MCP
12. LogicPro – Logic Pro
13. ProTools - HUI

(Tip: Platform B+ will automatically switch to the same Platform M+ DAW mode if they are connected.)

(Tip: Platform M+ / Platform B+ will memorise your last selected DAW mode and re-enter the same mode a few seconds after it has been switched on. (i.e. DAW mode selection is not needed if the last mode is being used.)

For the function descriptions below, please place the LogicPro silicon overlay on your Platform B+.

2) VPot Assign

Tip: These functions are always used in conjunction with the channel knobs.

Track button	Activate the Track function. Rotate the channel knob to adjust the volume of the corresponding track.
Send button	Press to make a send assignment for each track. Rotate the channel to adjust the bus and press to make the assignment.
Button Pan Surround	Activate the Pan function. Rotate the channel knob to adjust the pan value of the corresponding track.
Pan/Surround button	Press to make a plug-in assignment for each track. Once a plug-in has assigned and entered a particular plug-in window, the other channel knobs are used to adjust the different plug-in parameters. Also, for some plug-ins, the 4-arrow buttons surrounding the Zoom buttons are also used
Plug-in button	Press to adjust the EQ value of each track. Once you have entered the EQ window, the other channel knobs are used to adjust the various EQ parameters. The 4-arrow buttons surrounding the Zoom buttons are also used.
EQ button	Press to adjust the parameters of the Instrument tracks.

3) User-defined control buttons (F1-F8)

F1-F8 buttons	Please refer to the function list in this manual for these button functions.
----------------------	--

4) Global View

Note: The “Global View” button must be activated first to use the Global view functions.

Global View button	Activate this button to enter the Global view function mode and use the global view functions as follows.
MIDI Tracks button	Press to enter the “MIDI Tracks” view. Only the “MIDI” tracks will appear on the screen.
Audio Tracks button	Press to enter the “Inputs” view. Only the “Inputs” tracks will appear on the screen.

Audio Tracks button	Press to enter the “Audio Tracks” view. Only the “Audio” tracks will appear on the screen.
Audio Inst button	Press to enter the “Audio Inst” view. Only the “Audio Inst” tracks will appear on the screen.
AUX button	Press to enter the “AUX” view. Only the “AUX” tracks will appear on the screen.
Busses button	Press to enter the “Busses” view. Only the “Busses” tracks will appear on the screen.
Outputs button	Press to enter the “Outputs” view. Only the “Outputs” tracks will appear on the screen.
User button	Press to enter the “User” view. Only the “User” tracks will appear on the screen.

5) Utilities

Save button	Activate DAW save function.
Undo button	Activate DAW undo function.
Cancel button	Activate DAW undo function.
Enter button	Activate DAW enter function.

6) Automation section

TRIM	Currently unassigned.
TOUCH button	Press to set selected track’s automation to Touch..
LATCH	Press to set selected track’s automation to Latch
GROUP	Press to enter “Group” edit mode.

7) Motorized fader control buttons section

FLIP button	Press the FLIP button to swap the parameter settings of the motorized faders and the rotary
--------------------	---

8) Zoom control buttons section

ZOOM button

The ZOOM button is typically used in conjunction with the ARROW buttons described below to zoom in and out within windows in the DAW application

UP button

The UP button is used to navigate (up movement) through the Graphical User Interface (GUI) of the DAW application. Or zoom in vertically when used in conjunction with Zoom function

DOWN button

The DOWN button is used to navigate (down movement) through the Graphical User Interface (GUI) of the DAW application. Or zoom out vertically when used in conjunction with Zoom function.

LEFT button

The LEFT button is used to navigate (left movement) through the Graphical User Interface (GUI) of the DAW application. Or zoom in horizontally when used in conjunction with Zoom function.

RIGHT button

The RIGHT button is used to navigate (right movement) through the Graphical User Interface (GUI) of the DAW application. Or zoom out horizontally when used in conjunction with Zoom function

9) Modifier section

Shift button

Press to shift to the next layer of function buttons F9-F16.

Option button

A combination button. Use with different buttons to perform various functions. Please refer to the function list in this manual for their functions.

Alt button

A combination button. Use with different buttons to perform various functions. Please refer to the function list in this manual for their functions.

Control

A combination button. Use with different buttons to perform various functions.

10) Display section

Nom/Value

Press to switch the LCD display from name to value, vice-versa. Some of the function such as Pan, you could switch the LCD display in between the Pan's channel name and the Pan value.

SMPTE/BBT button

This display shows the time location of your project in either SMPTE or BBT format.

11) Other section

Drop button Toggle Drop

Replace button Toggle Replace.

Click button Toggle playback or record metronome click.

Solo button Toggle track solo (of selected track).

Marker button Toggle small Marker mode.

Nudge button Toggle small Nudge mode

Rear Panel Layout



1. USB port

Connect your Platform B+ to your Mac/PC via this USB port if you are using it as a standalone device, otherwise you do not have to connect it.

2. Extension ports

Connect your Platform B+ to Platform M+ with the provided cable.

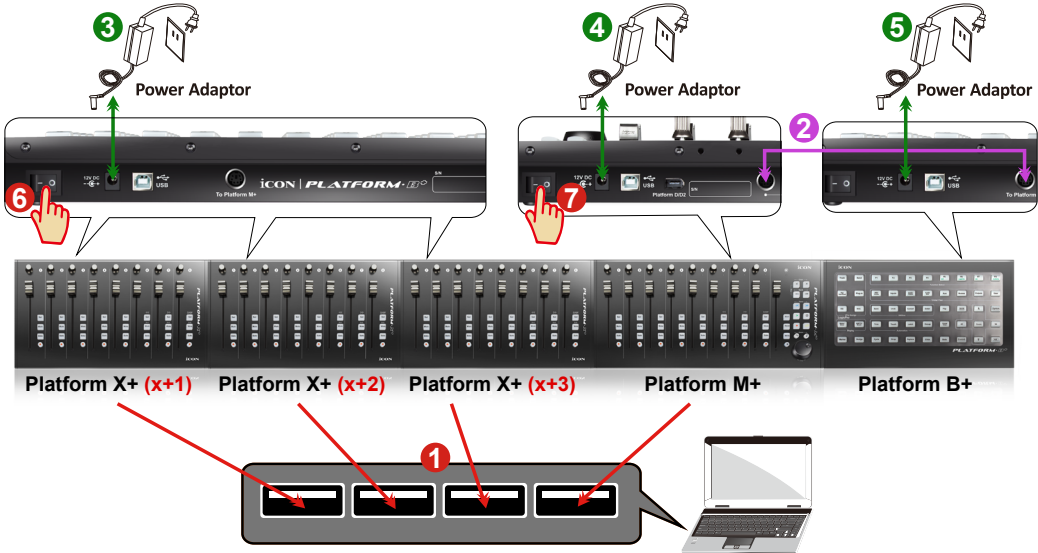
3. 12V/0.35A power adaptor

Connect the provided power adaptor here.

(Note: Platform B+ is not able to work without the provided power adaptor connected. The USB bus power is not able to provide sufficient power supply for Platform B+.)

Getting Started

(Connected with Platform M+ and Platform X+ (1 - 3 units))



2 Connect the Platform B+ to your Platform M+ with the provided cable.

Use the provided cable to connect devices Platform B+ and Platform M+ via the expansion ports.

1 Select the DAW at Platform M+

Turn on the power of Platform M+ first and make the DAW selection as shown in the instructions below.

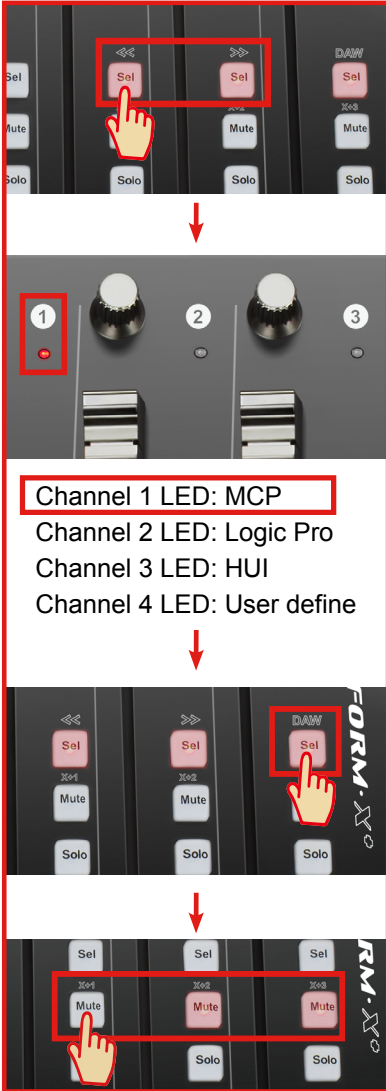
Press one of the 4 mode button according to your DAW as the below table.

MCP	LogicPro	HUI	UserDefine
1. Nuendo/Cubase	Logic Pro	ProTools	User self mapping with iMap
2. Digital Performer			
3. FL Studio			
4. SamplitudePro			
5. Reaper			
6. Studio One			
7. Bitwig			
8. Reasons			
9. Sonar			
10. Audition			
11. Ableton Live			

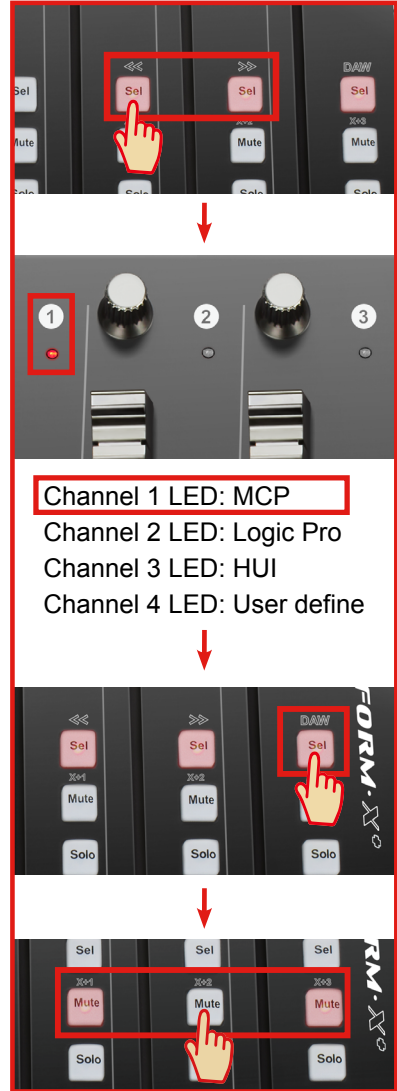
(Tip: Platform M+ will memorize your last selected DAW mode and re-enter the same mode a few seconds after it has been switched on. (i.e. DAW mode selection is not needed if the last mode is being used.)

Then turn on the power of Platform B+, it will switch to the same DAW mode as Platform M+.

8 Platform X+ (X+1)



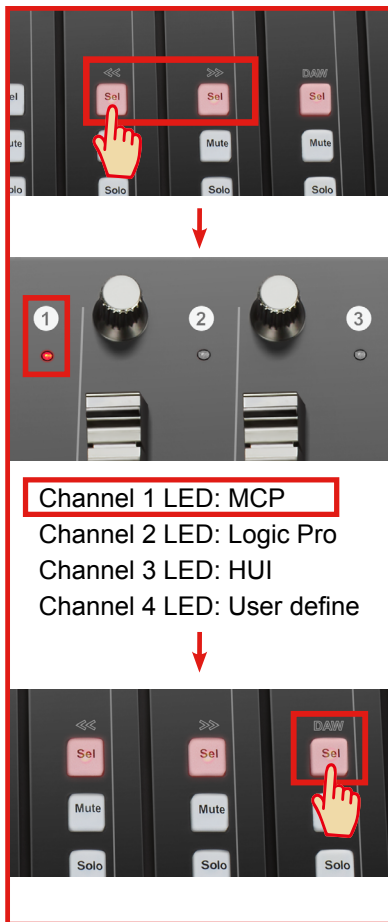
9 Platform X+ (X+2)



10 Platform X+ (X+3)



11 Platform M+



12 Platform B+



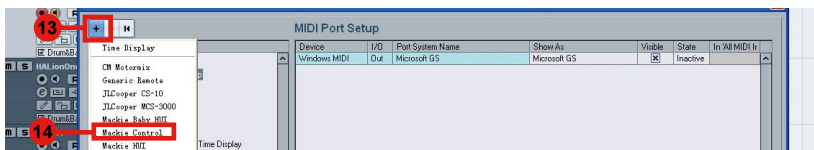
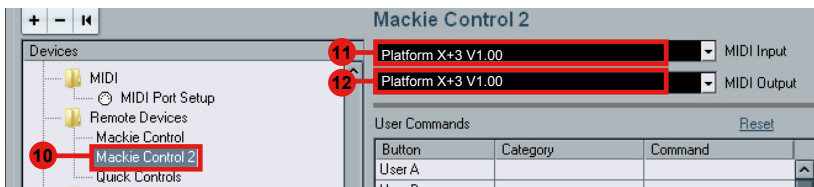
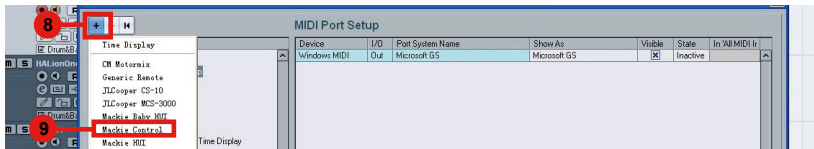
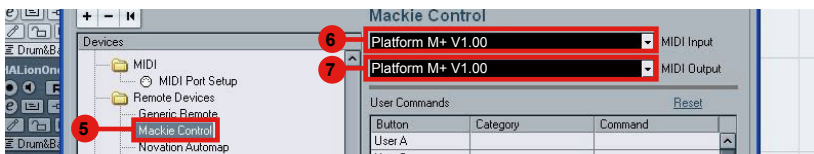
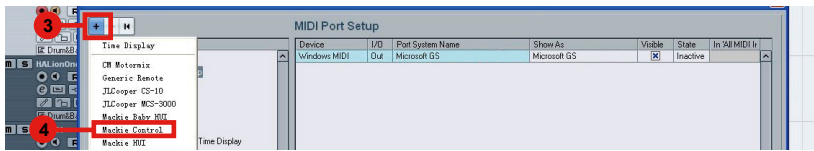
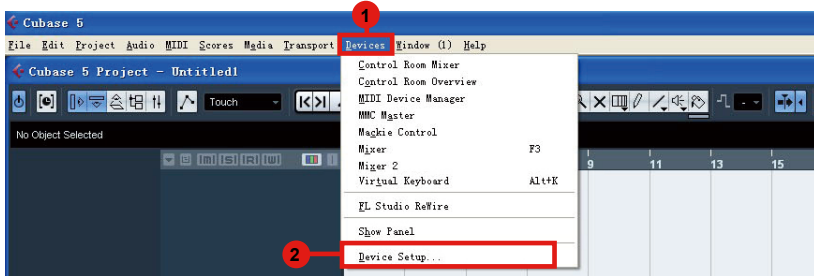
13. Setup your DAW

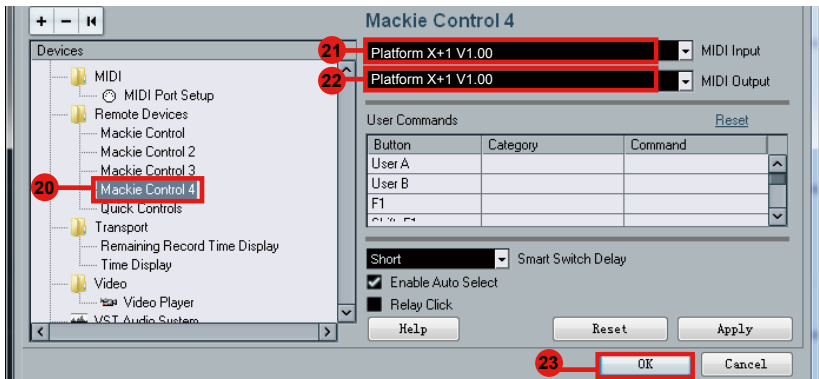
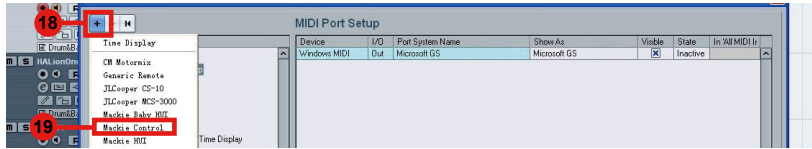
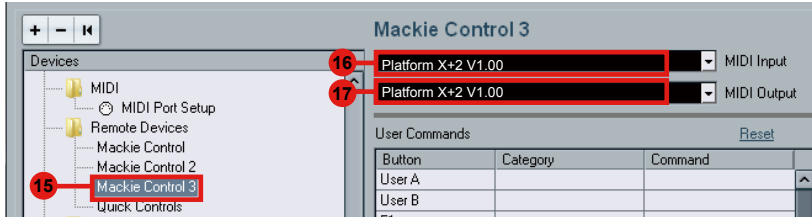
The Platform M+, Platform X+ & Platform B+ built-in Mackie Control, LogicPro and HUI protocol, which will save you considerable trouble in setting up the device at your DAW. Simply add the “Mackie Control” or “HUI” device under the “MIDI Controller” on your software. After the Mackie Control or HUI device has been added, select Platform M+ controller as your MIDI input and output device in your DAW.

*(**Note:** You will only see Platform M+ on your hardware list as Platform B+ will be recognized as part of Platform M+.)*

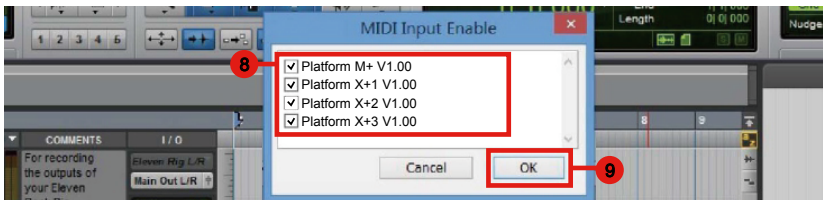
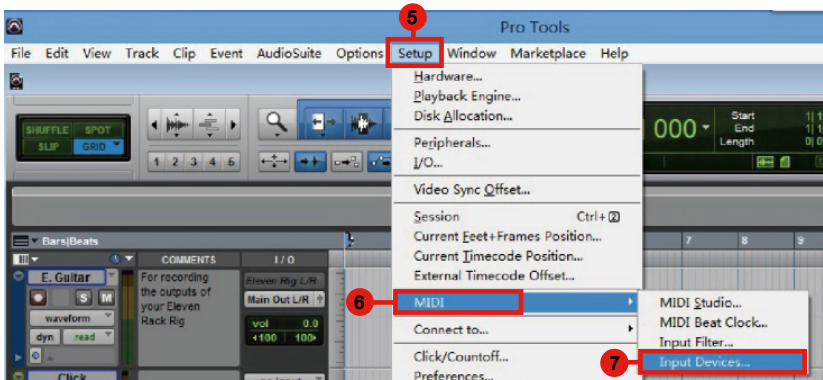
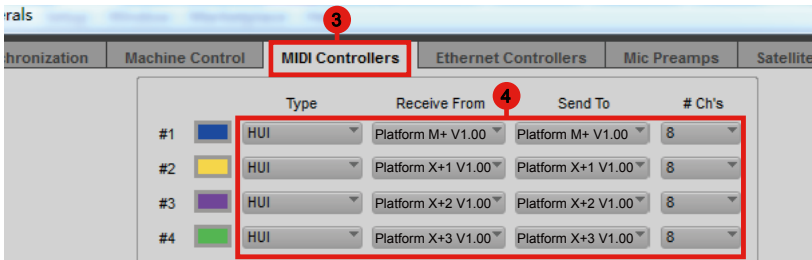
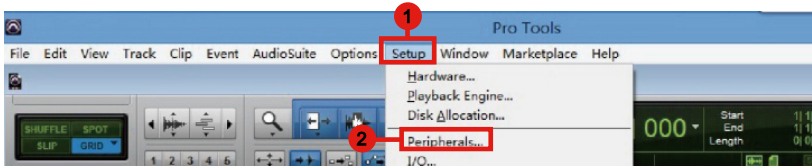
*(**Tip:** You may also refer to our website at www.icoproaudio.com, where you'll find set up illustrations for different DAW's in each controller (Platform B+) product page's “Setup demo” section.*

For DAW's not on our setup demo list, please refer to your software user manual for hardware setup.)

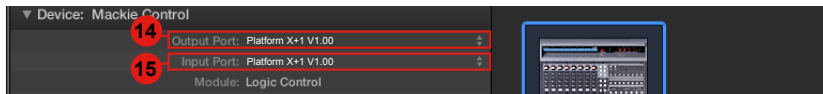
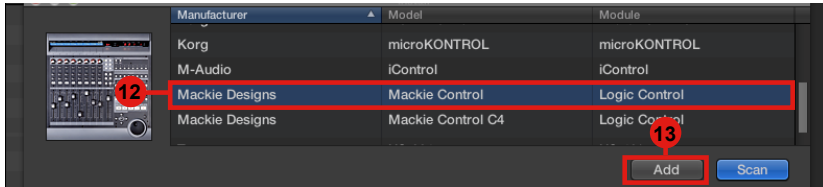
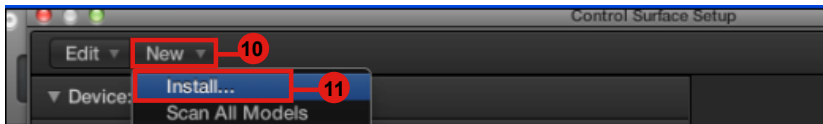
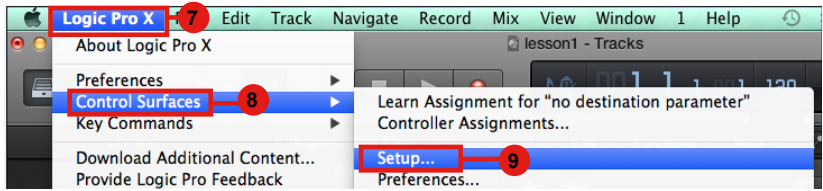
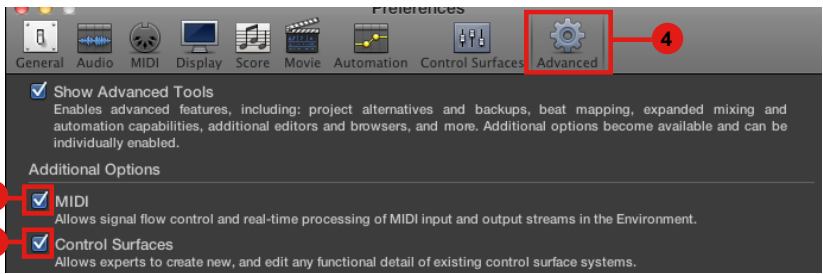
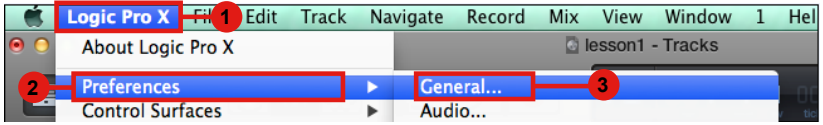


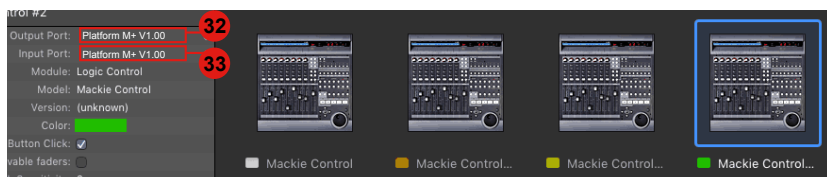
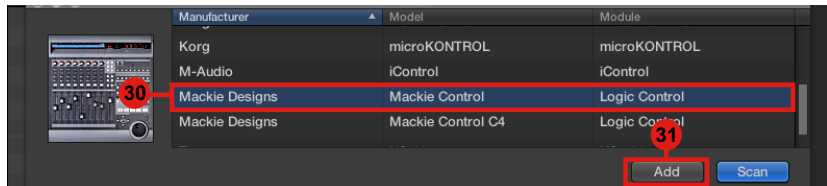
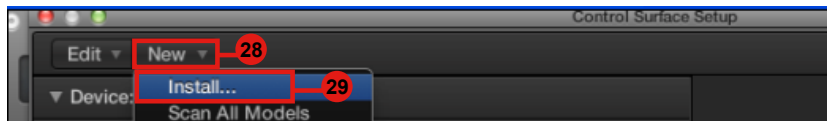
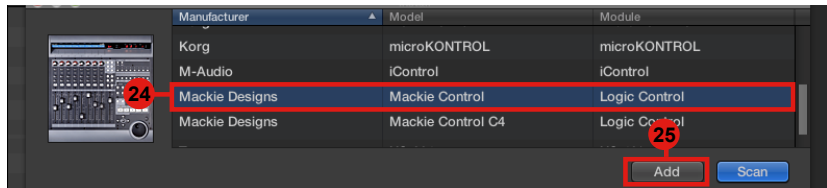
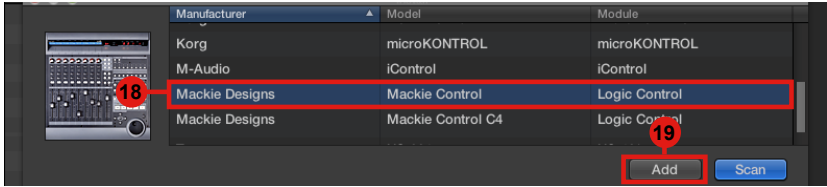


Pro Tools

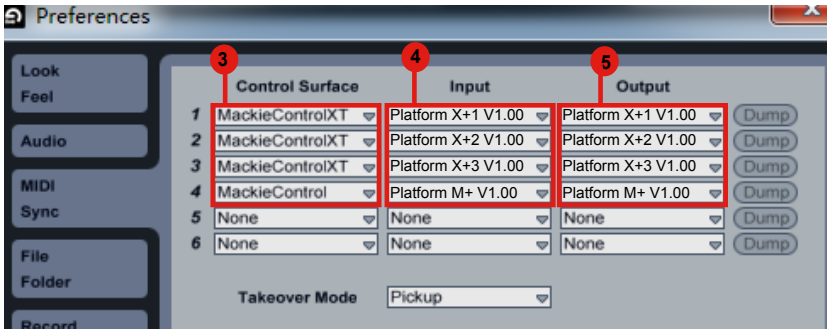
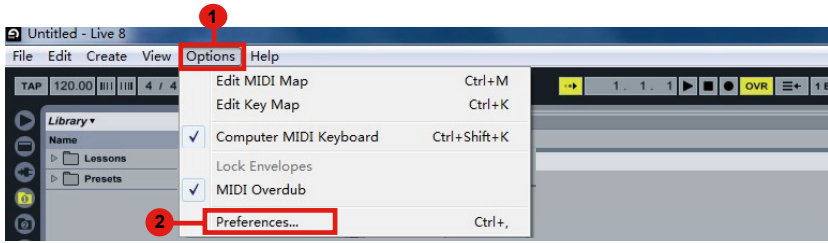


Logic pro



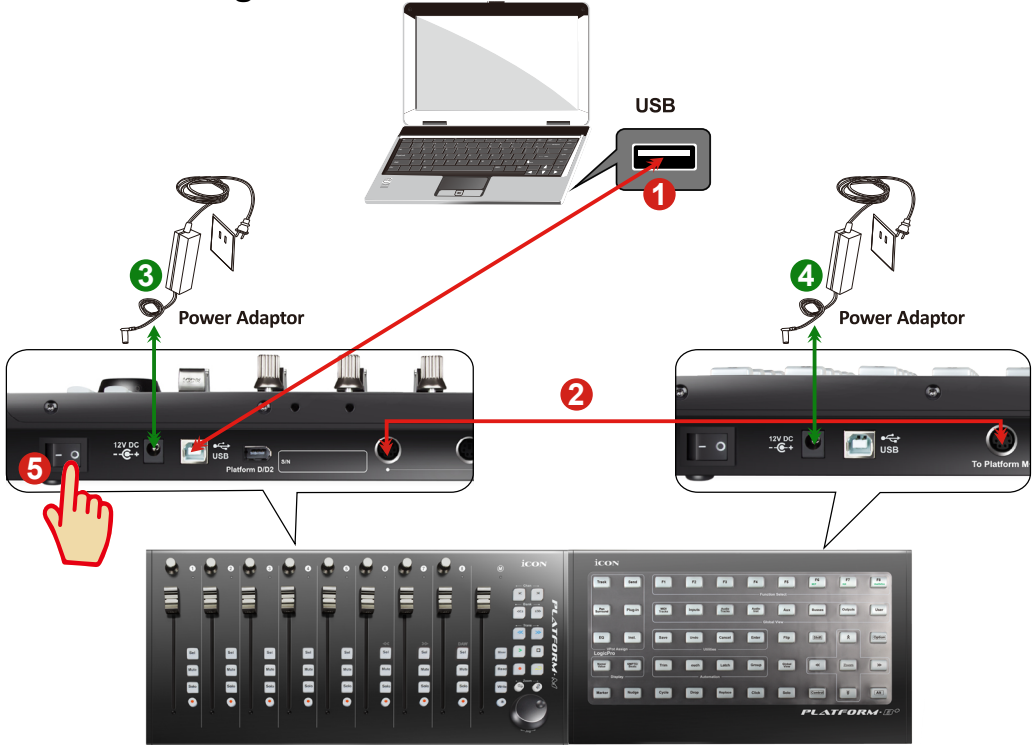


Ableton Live



Getting Started (Connected with Platform M+)

Connecting Your Platform B+ Controller



6 Platform M+



7 Platform B+



2 Connect the Platform B+ to your Platform M+ with the provided cable.

Use the provided cable to connect devices Platform B+ and Platform M+ via the expansion ports.

6 Select the DAW at Platform M+

Turn on the power of Platform M+ first and make the DAW selection as shown in the instructions below.

Press one of the 4 mode button according to your DAW as the below table.

MCP	LogicPro	HUI	UserDefine
1. Nuendo/Cubase	Logic Pro	ProTools	User self mapping with iMap
2. Digital Performer			
3. FL Studio			
4. SamplitudePro			
5. Reaper			
6. Studio One			
7. Bitwig			
8. Reasons			
9. Sonar			
10. Audition			
11. Ableton Live			

(Tip: Platform M+ will memorize your last selected DAW mode and re-enter the same mode a few seconds after it has been switched on. (i.e. DAW mode selection is not needed if the last mode is being used.)

Then turn on the power of Platform B+, it will switch to the same DAW mode as Platform M+.

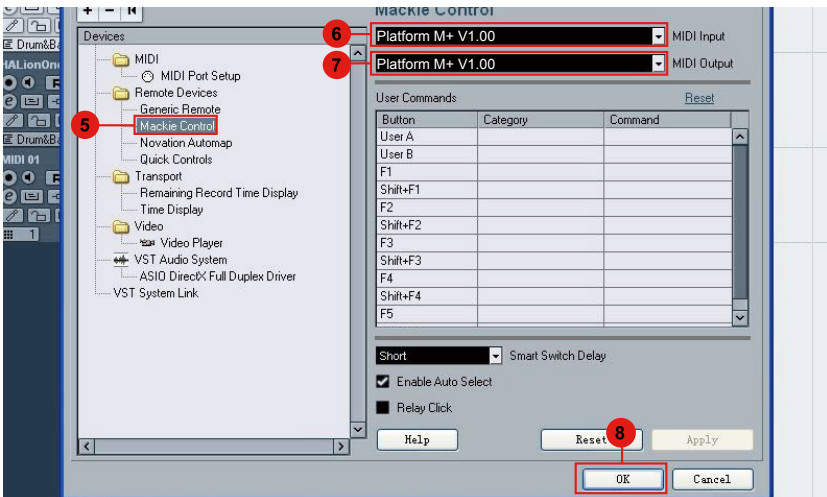
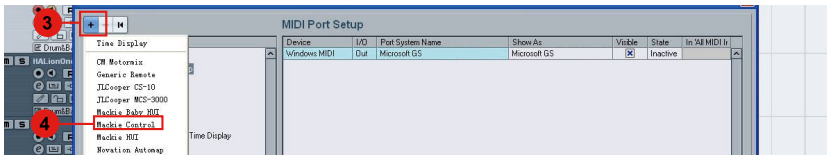
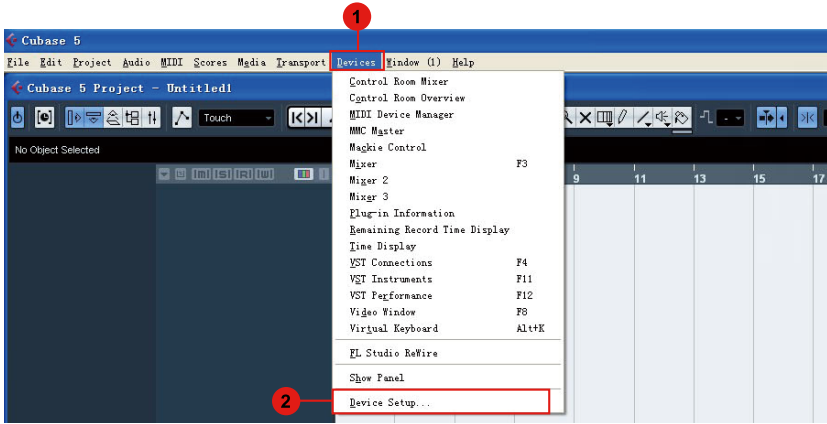
8. Setup your DAW

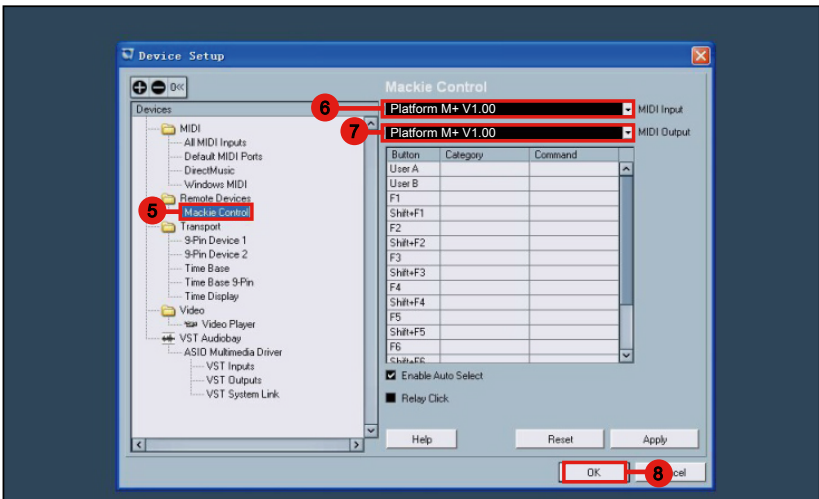
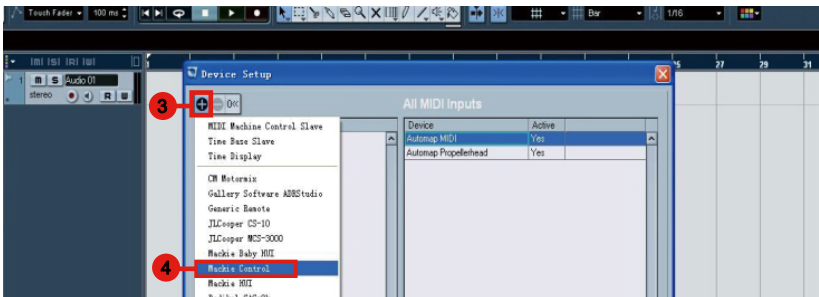
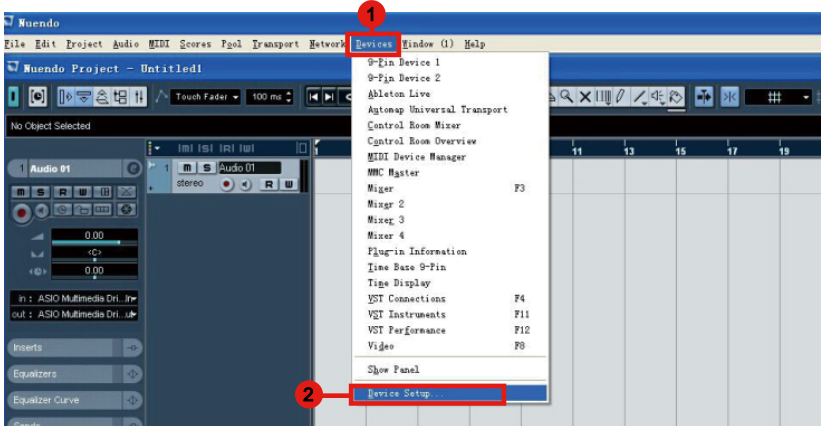
The Platform M+ & Platform B+ built-in Mackie Control, LogicPro and HUI protocol, which will save you considerable trouble in setting up the device at your DAW. Simply add the “Mackie Control” or “HUI” device under the “MIDI Controller” on your software. After the Mackie Control or HUI device has been added, select Platform M+ controller as your MIDI input and output device in your DAW.

(Note: You will only see Platform M+ on your hardware list as Platform B+ will be recognized as part of Platform M+.)

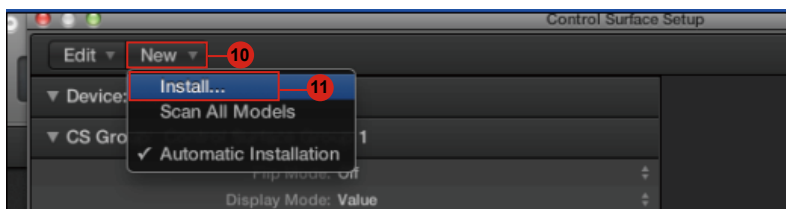
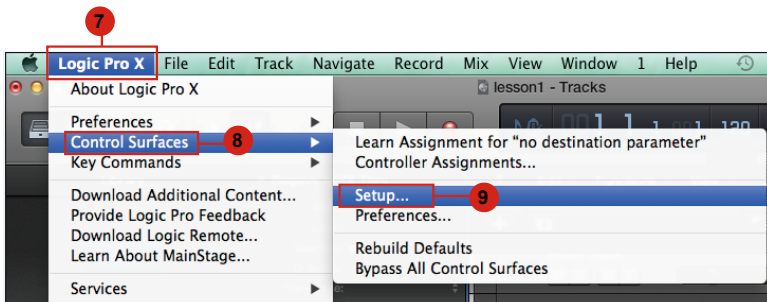
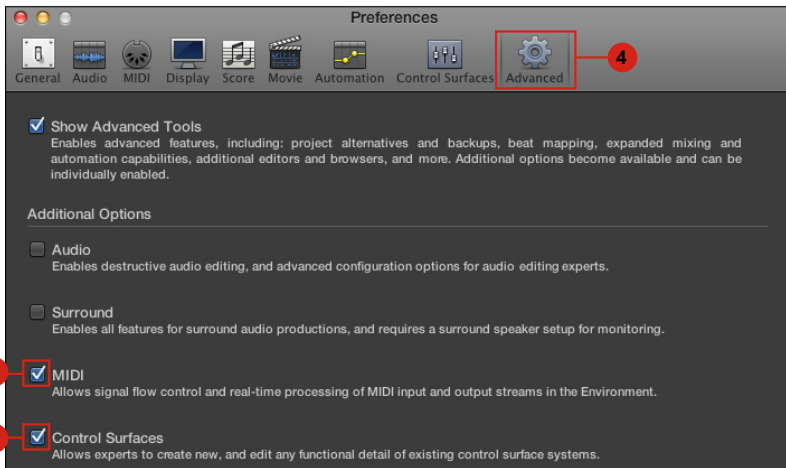
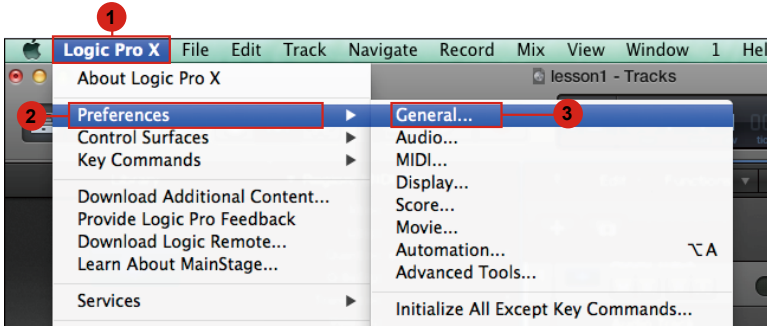
(Tip: You may also refer to our website at www.icoproaudio.com, where you'll find set up illustrations for different DAW's in each controller (Platform B+) product page's "Setup demo" section.

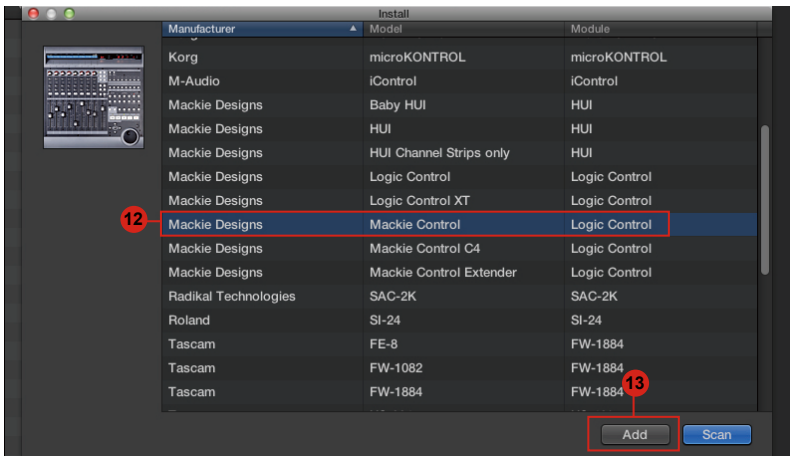
For DAW's not on our setup demo list, please refer to your software user manual for hardware setup.)



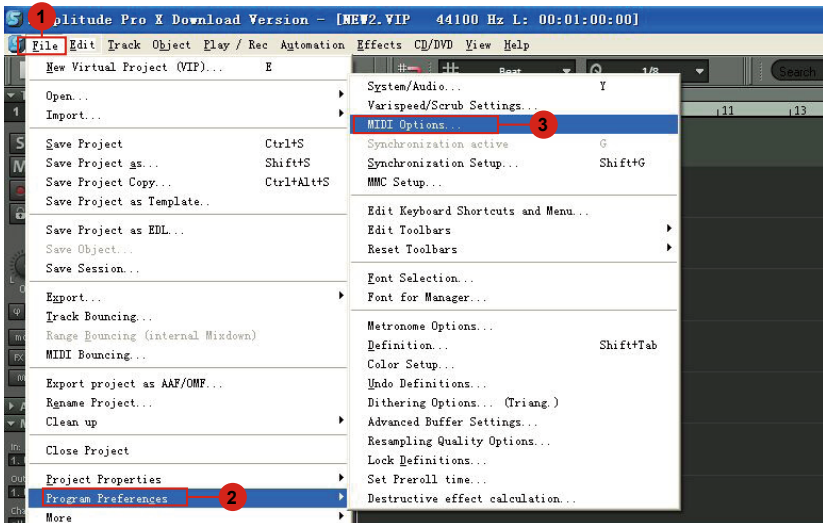


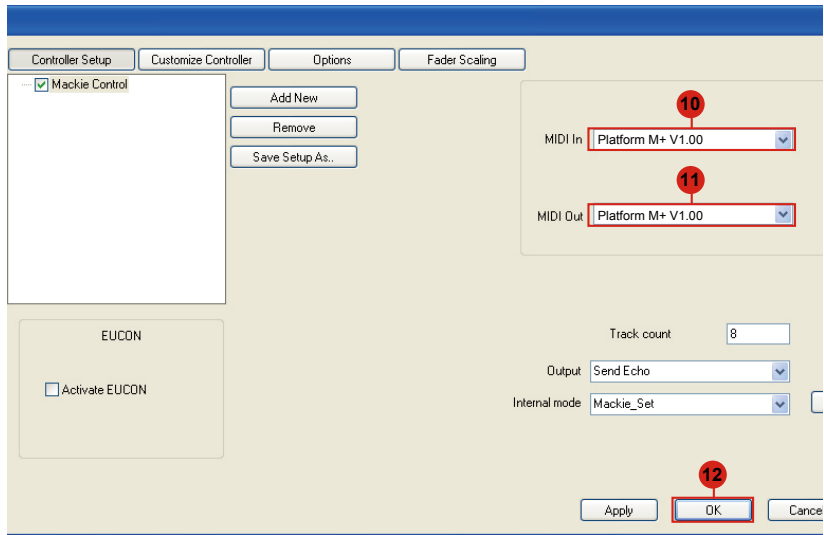
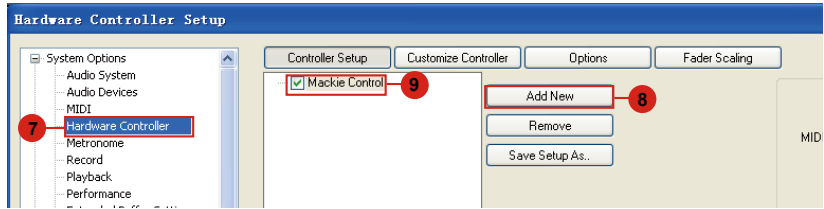
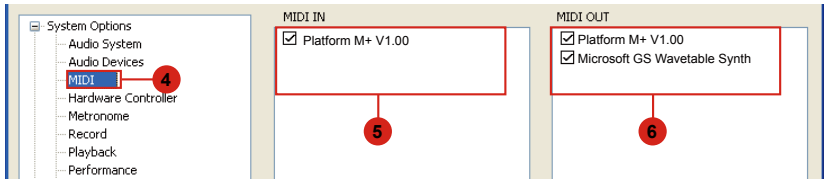
Logic Pro

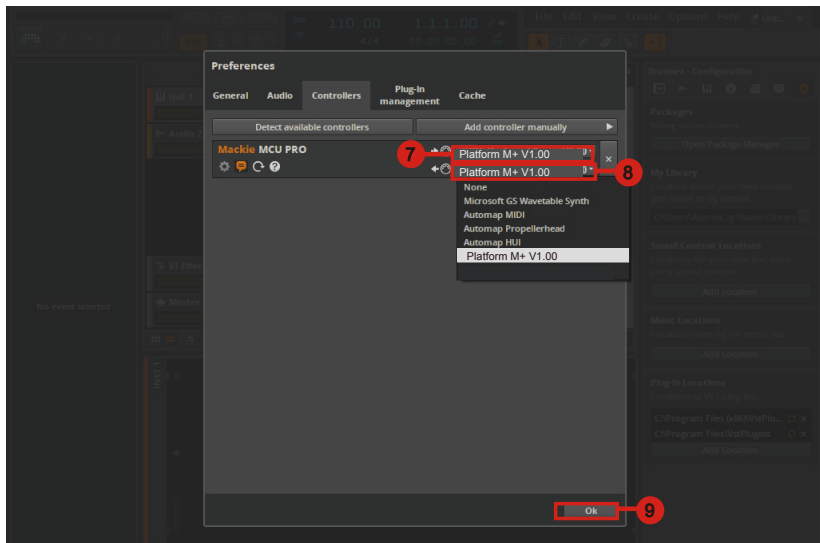
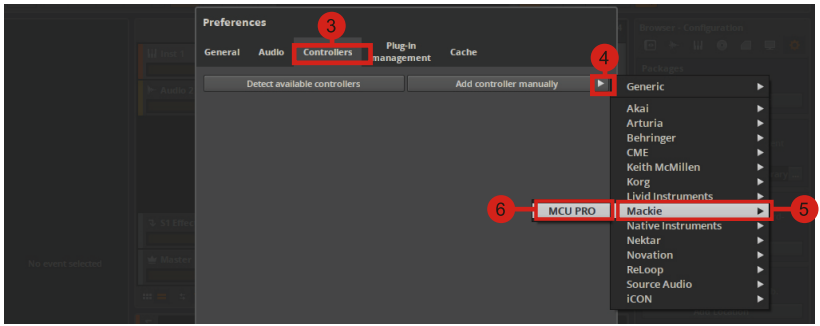
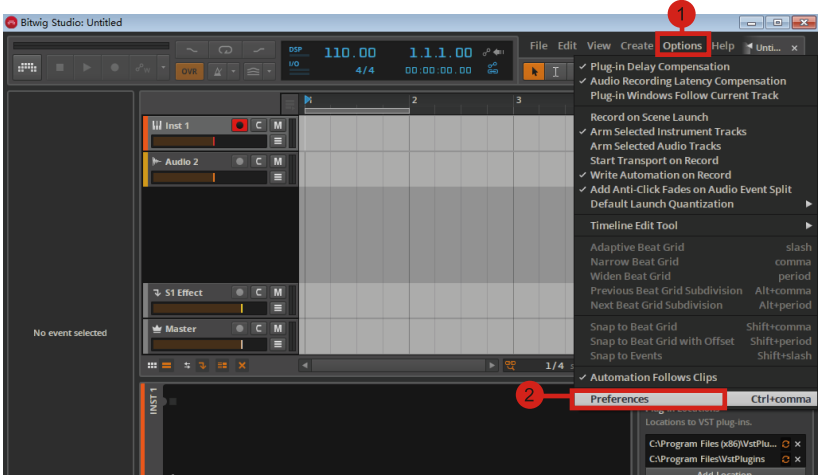




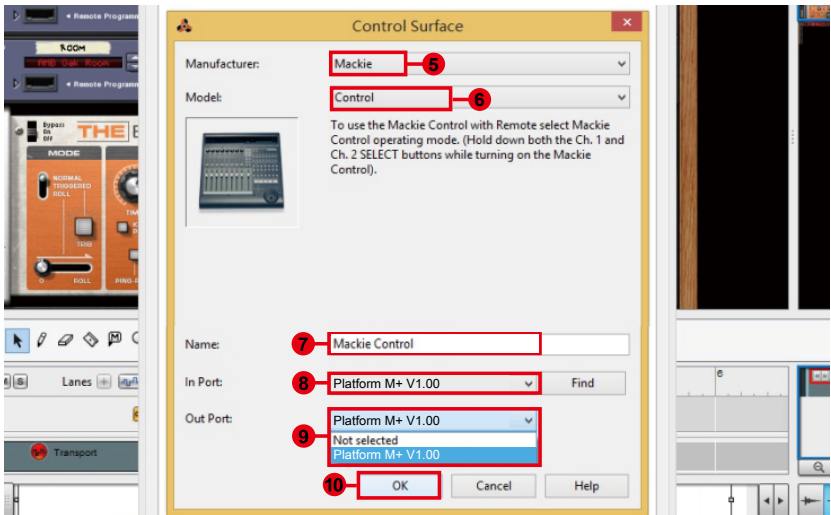
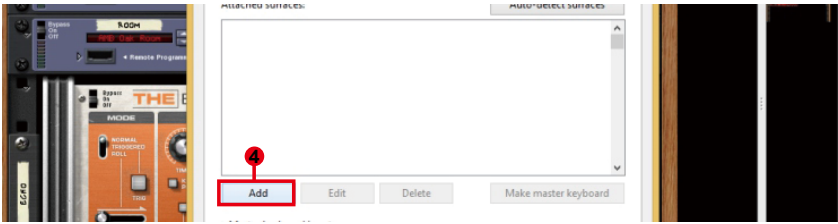
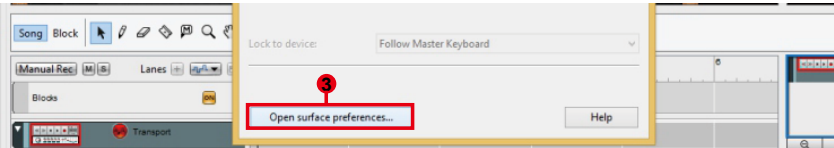
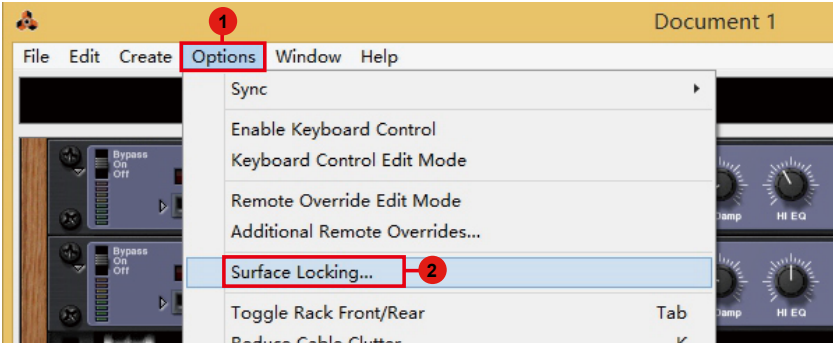
Samplitude



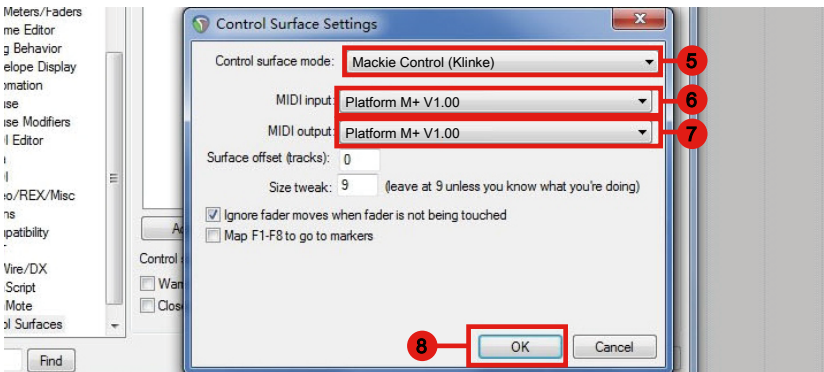
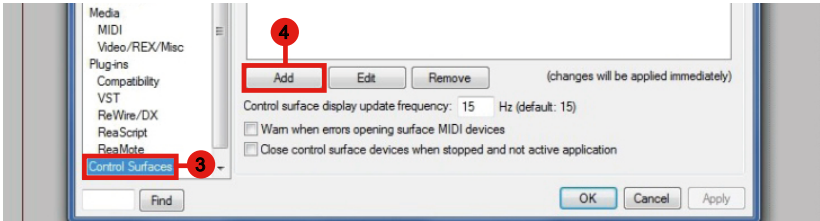
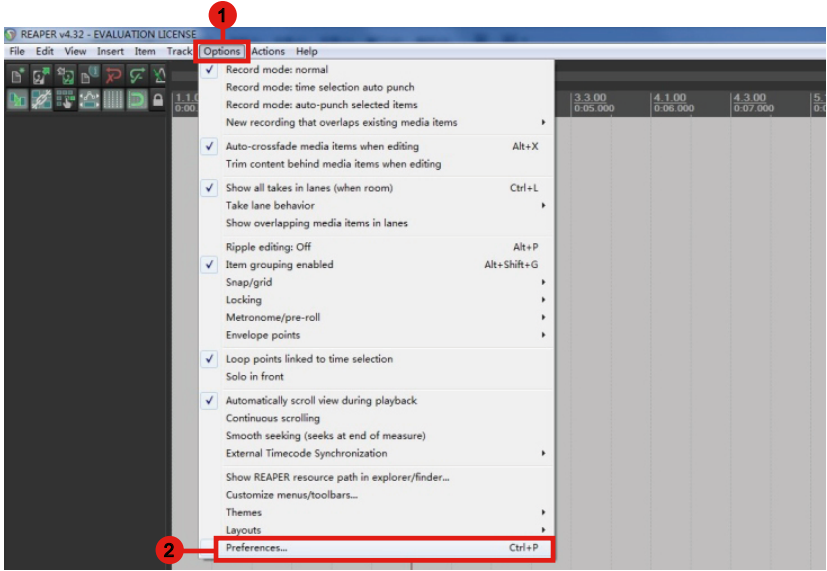




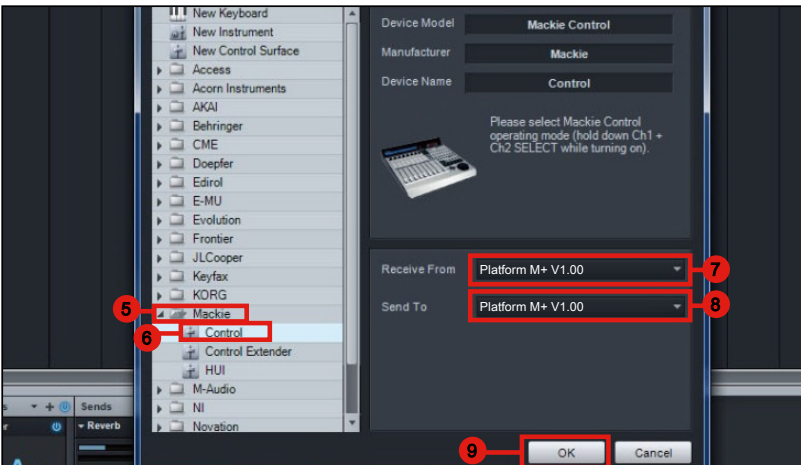
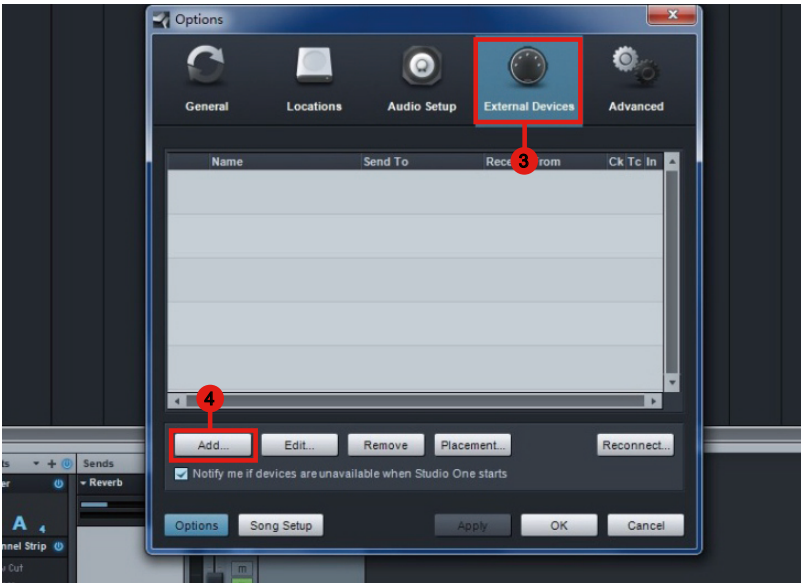
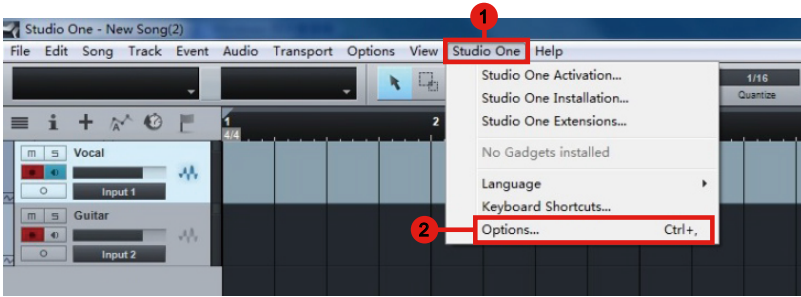
Reason



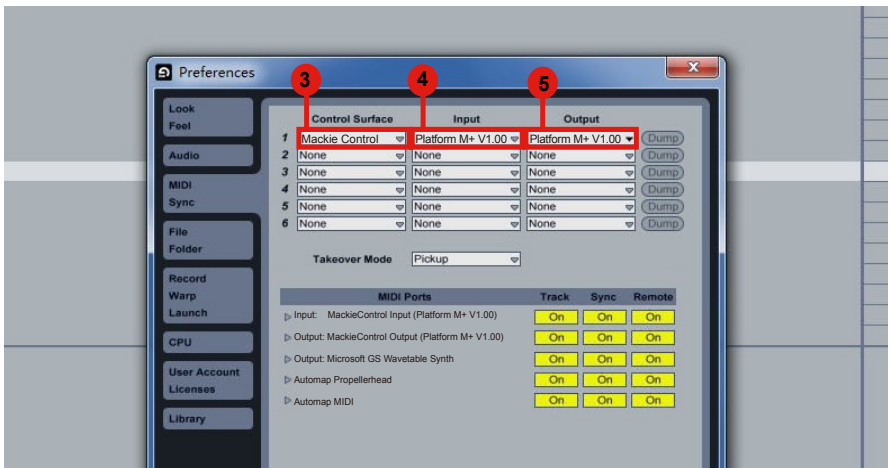
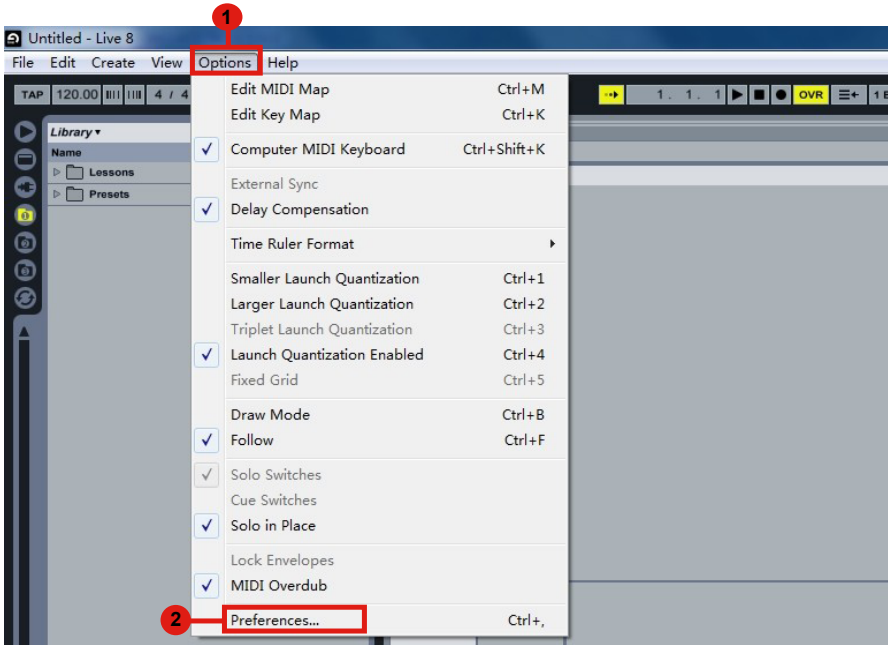
Reaper



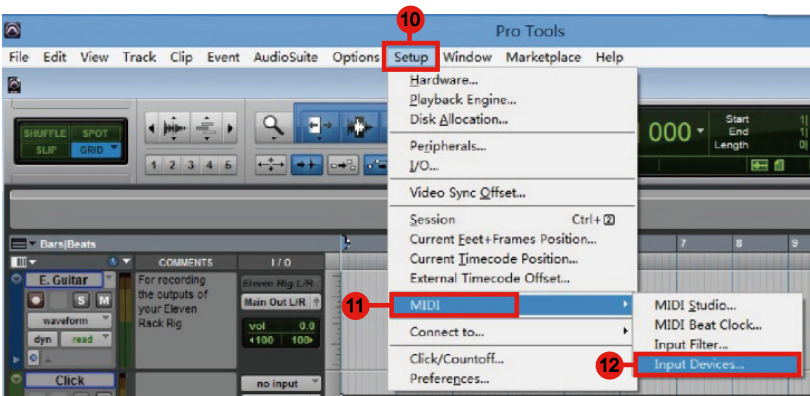
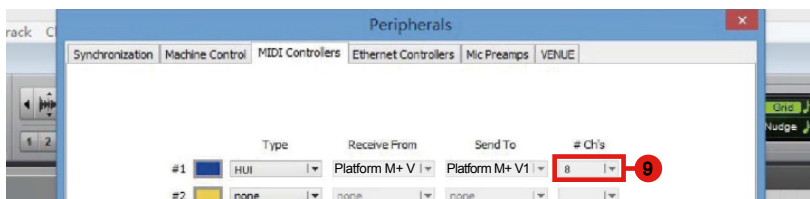
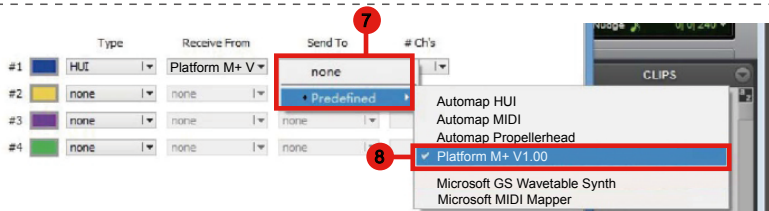
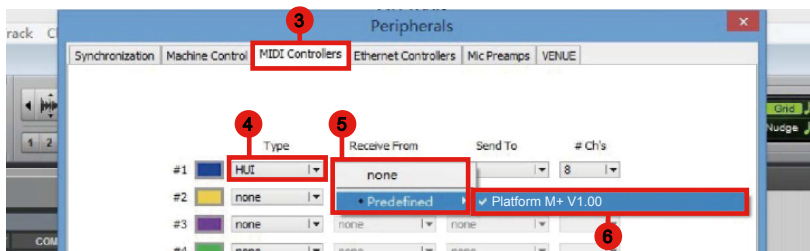
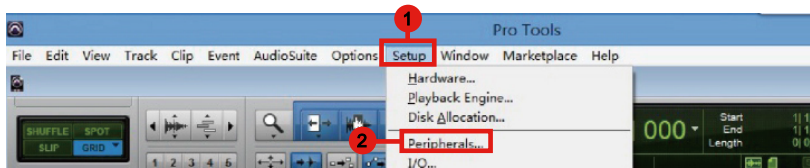
Studio One

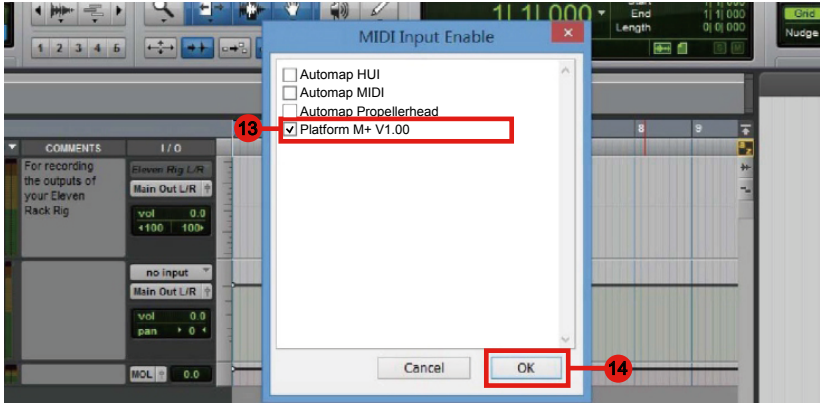


Ableton Live

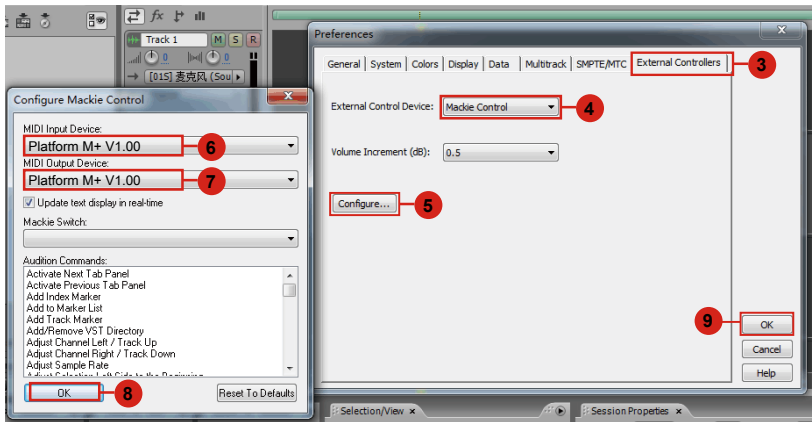
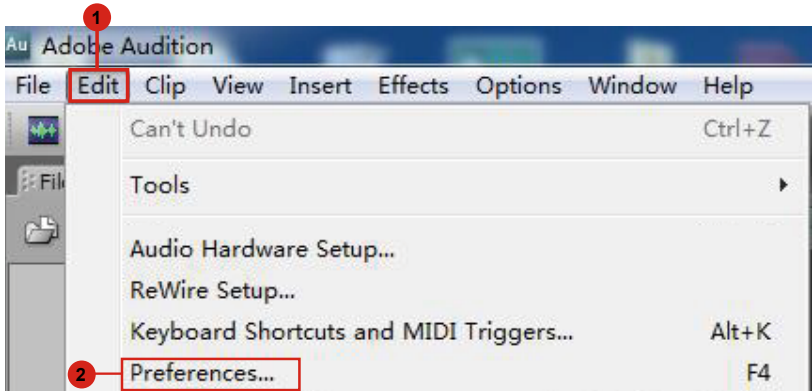


Pro Tools

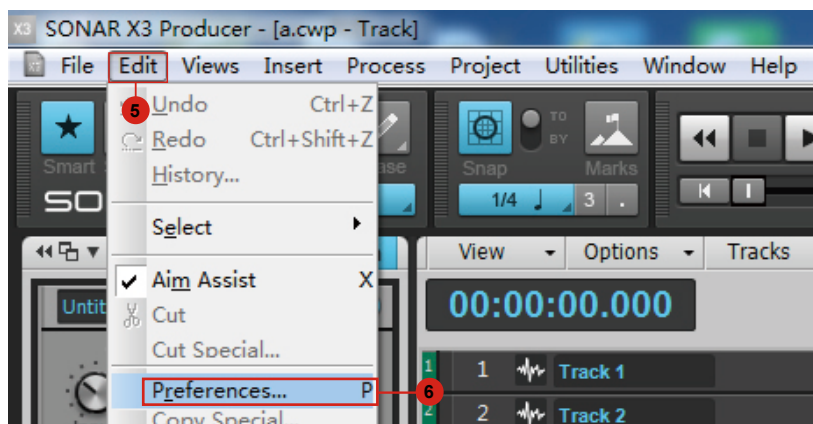
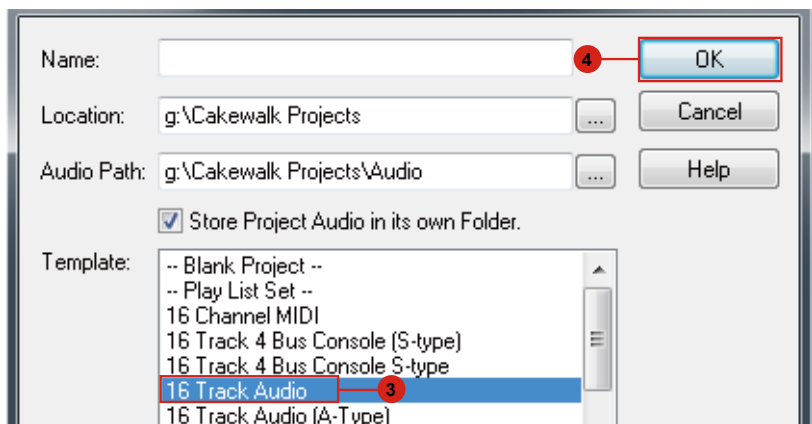
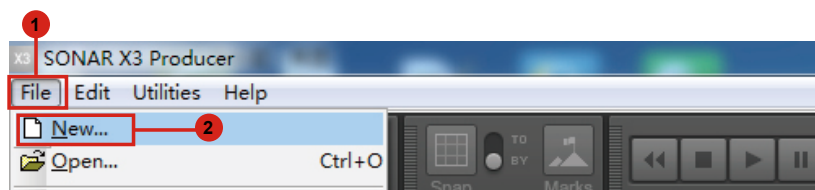


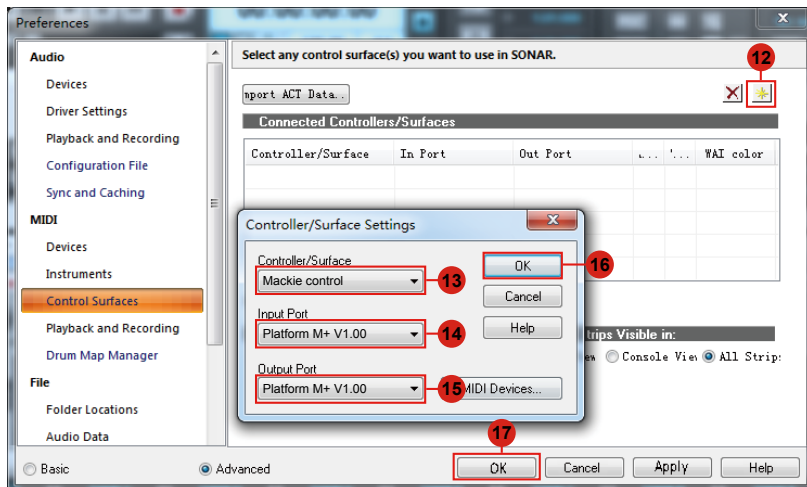
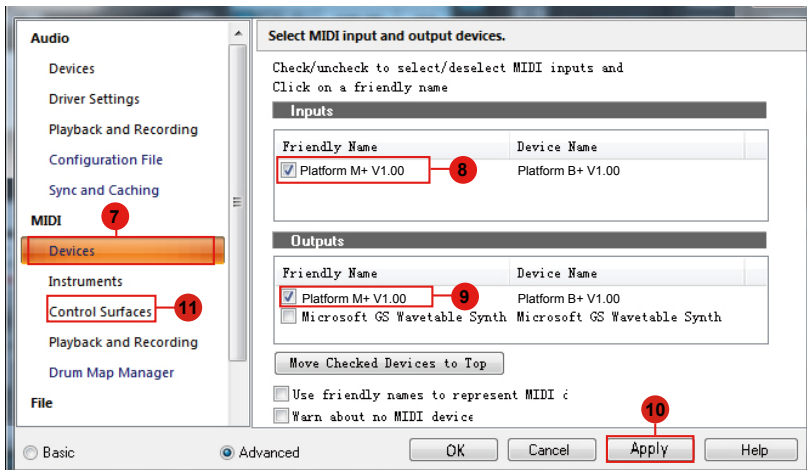


Audition

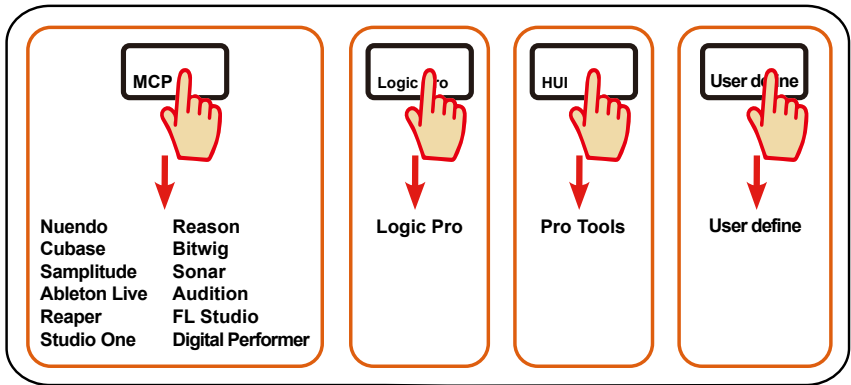
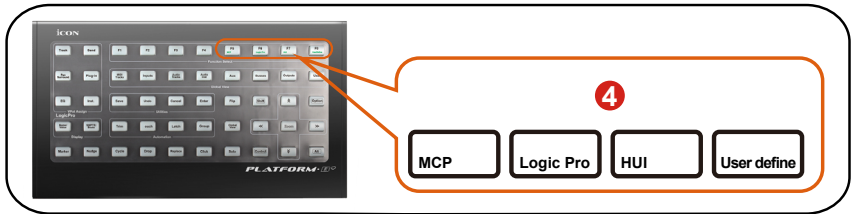
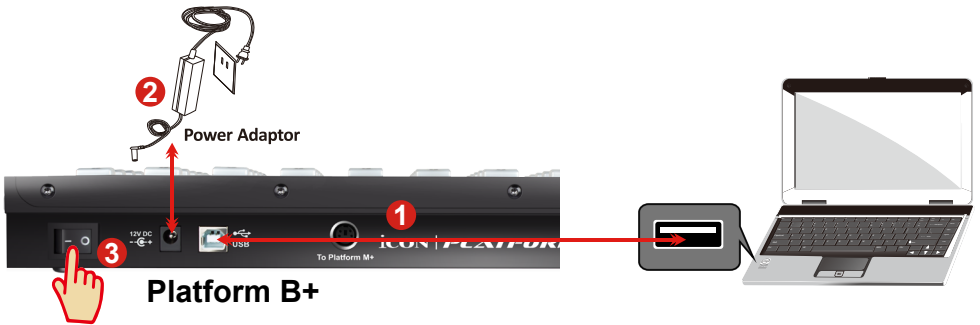


Sonar





Getting Started (Standalone) Connecting Your Platform B+ Controller



- 1 Connect the Platform B+ to your Mac/PC via the USB port.**
Choose a USB port on your Mac/PC and insert the wide (flat) end of the USB cable. Connect the cable's other end to the Platform B+. Your Mac/PC should automatically "detect" the new hardware and notify you that it is ready to use.

4 Select the DAW at Platform B+

Press the DAW button according to the DAW you are using to select the DAW mode.

Press one of the 4 mode button according to your DAW as the below table.

MCP	LogicPro	HUI	UserDefine
1. Nuendo/Cubase	Logic Pro	ProTools	User self mapping with iMap
2. Digital Performer			
3. FL Studio			
4. SamplitudePro			
5. Reaper			
6. Studio One			
7. Bitwig			
8. Reasons			
9. Sonar			
10. Audition			
11. Ableton Live			

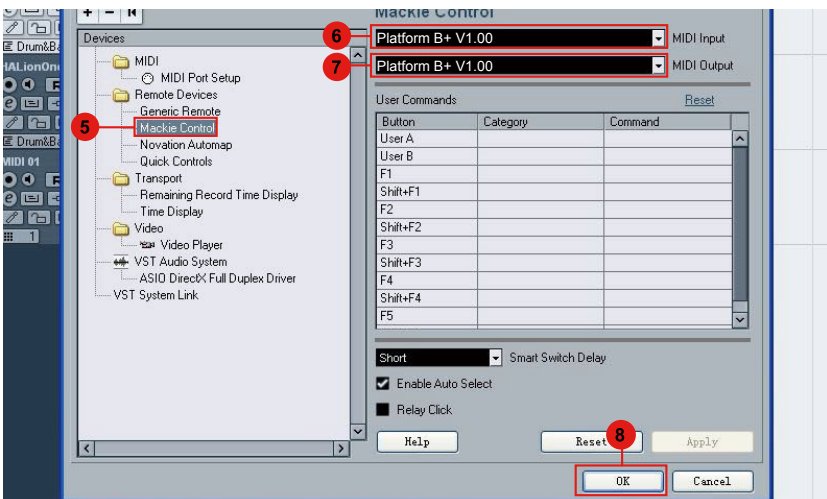
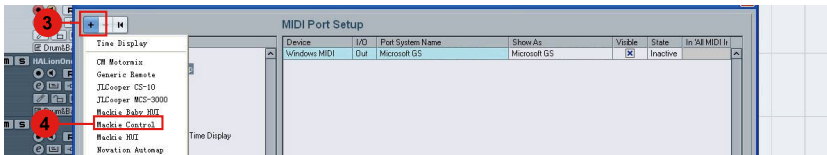
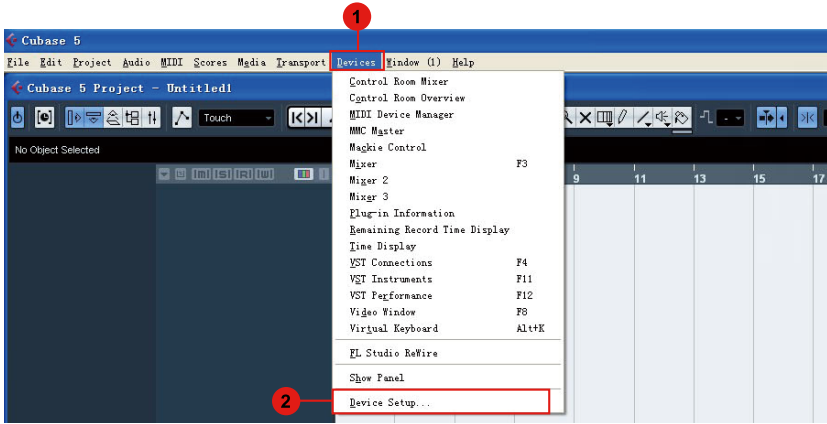
(Tip: Platform B+ will memories your last selected DAW mode and re-enter the same mode a few seconds after it has been switched on. (i.e. DAW mode selection is not needed if the last mode is being used.)

5. Setup your DAW

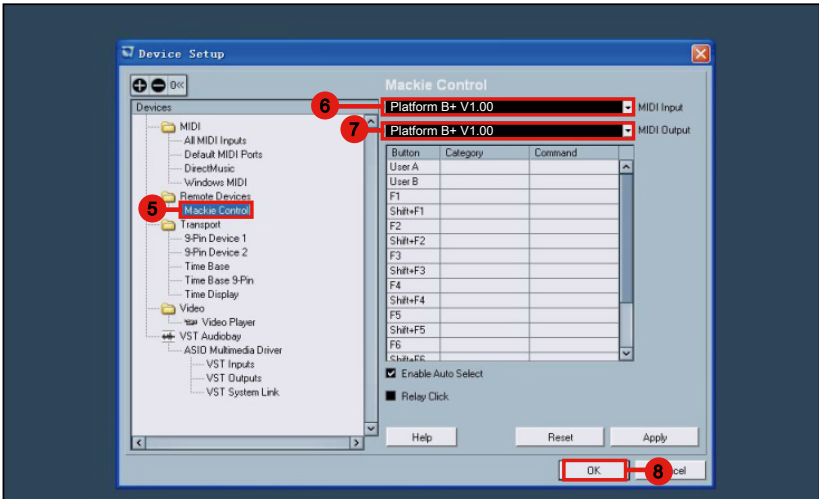
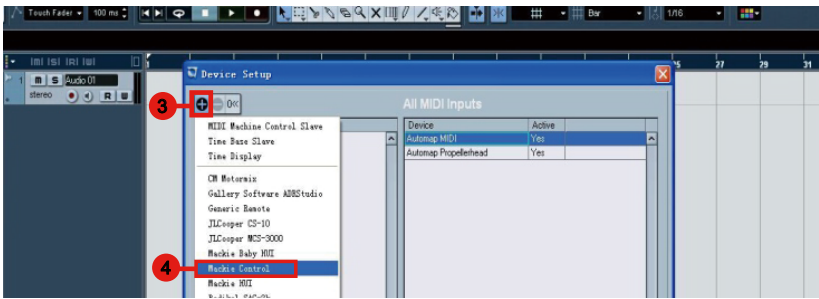
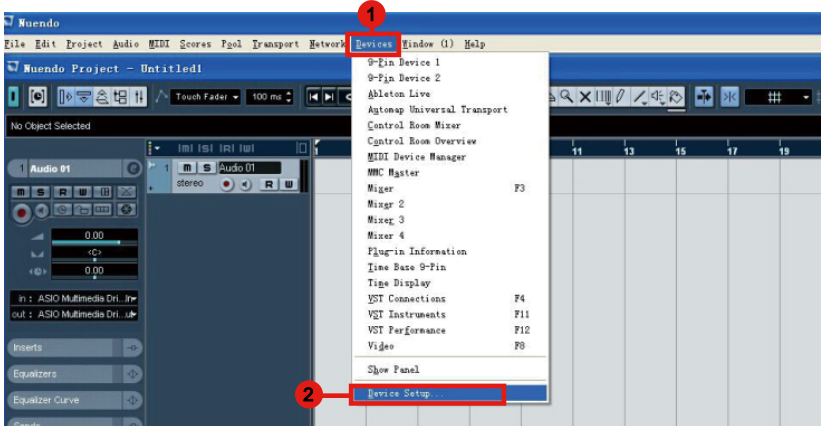
The Platform B+ has built-in Mackie Control, LogicPro and HUI protocol, which will save you considerable trouble in setting up the device at your DAW. Simply add the “Mackie Control” or “HUI” device under the “MIDI Controller” on your software. After the Mackie Control or HUI device has been added, select Platform B+ controller as your MIDI input and output device in your DAW.

(Tip: You may also refer to our website at www.icoproaudio.com, where you'll find set up illustrations for different DAW's in each controller (Platform B+) product page's “Setup demo” section.

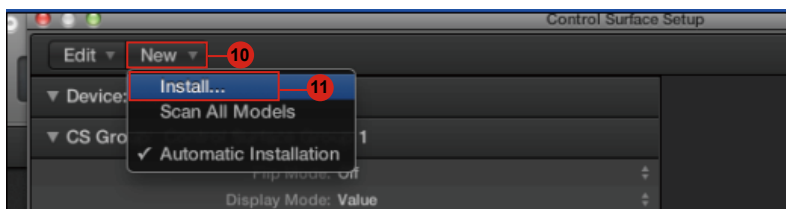
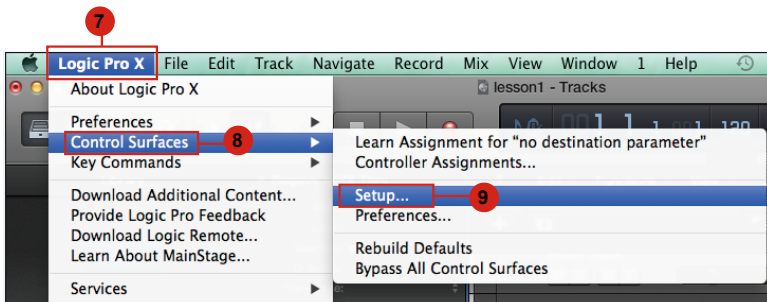
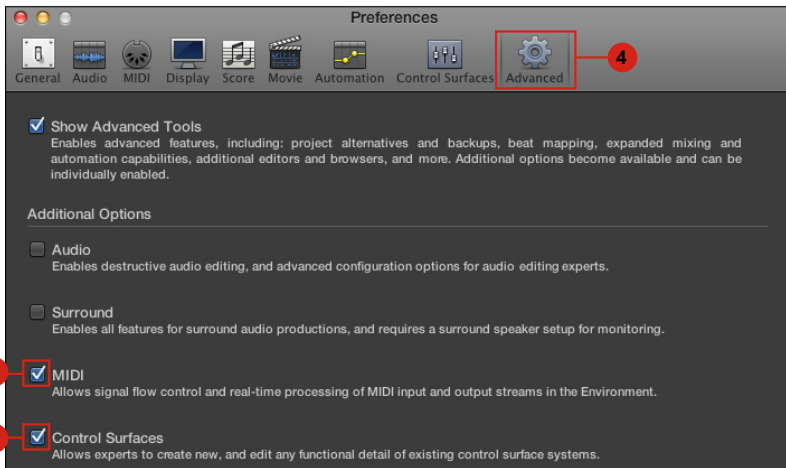
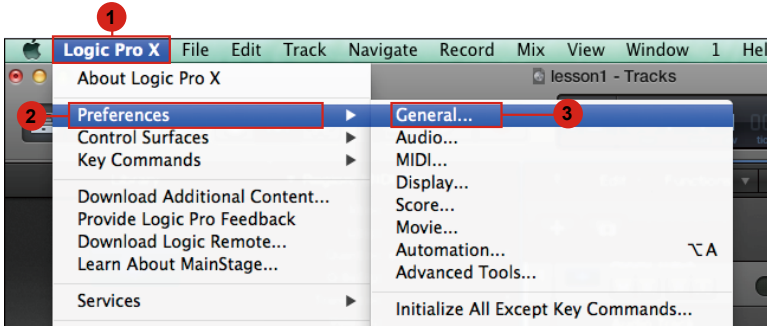
For DAW's not on our setup demo list, please refer to your software user manual for hardware setup.)

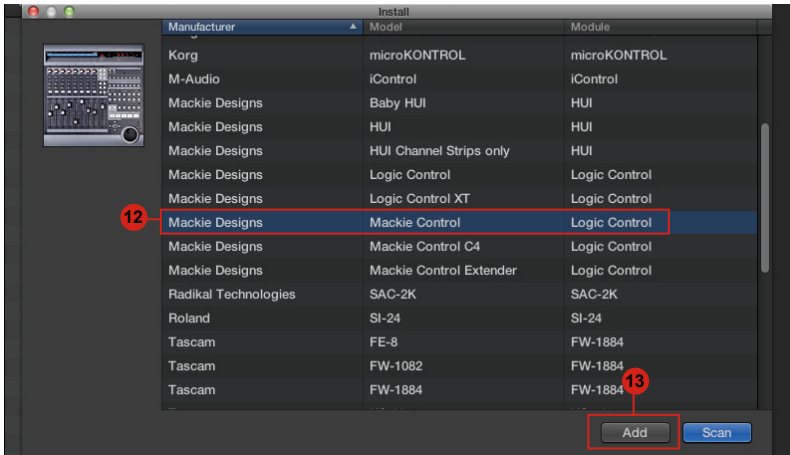


Nuendo

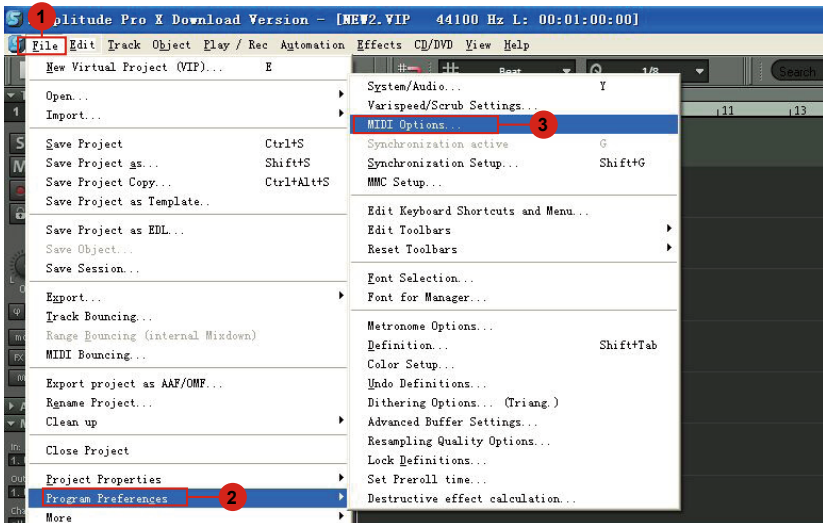


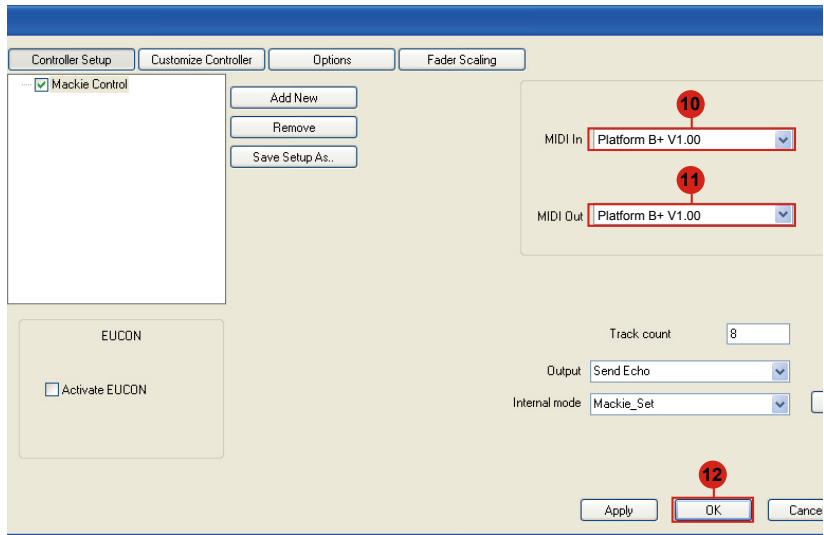
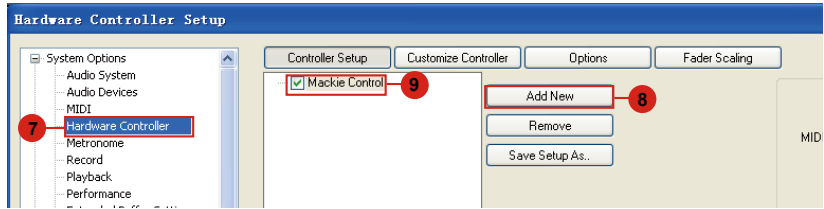
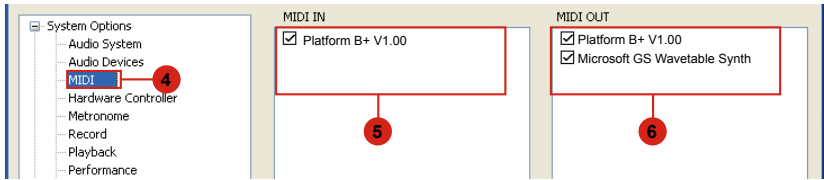
Logic Pro

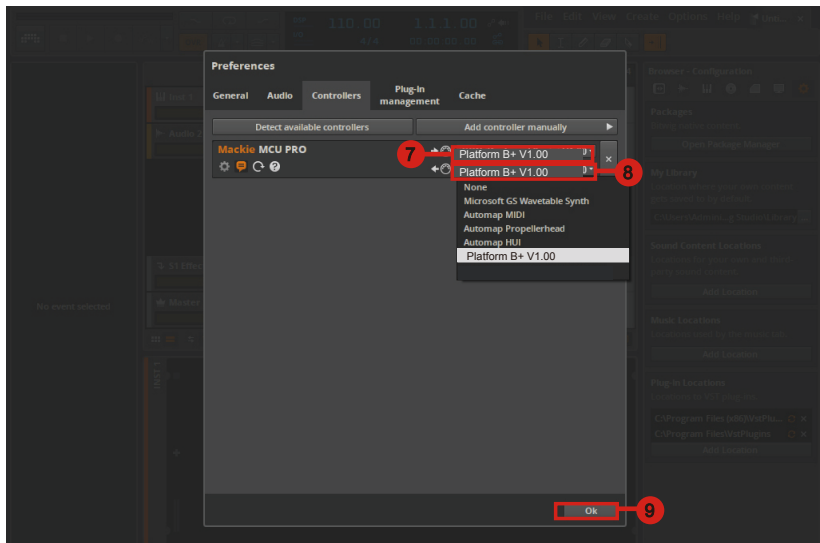
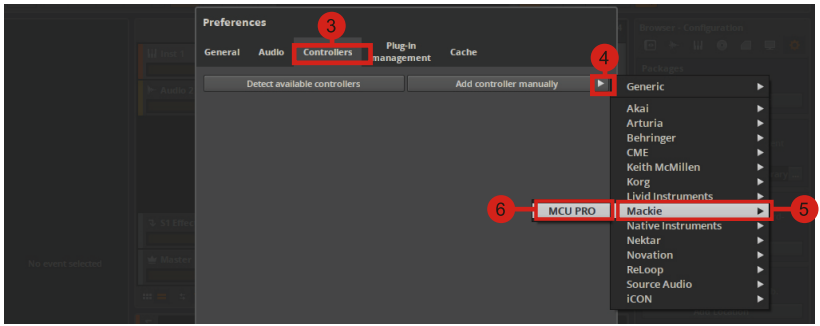
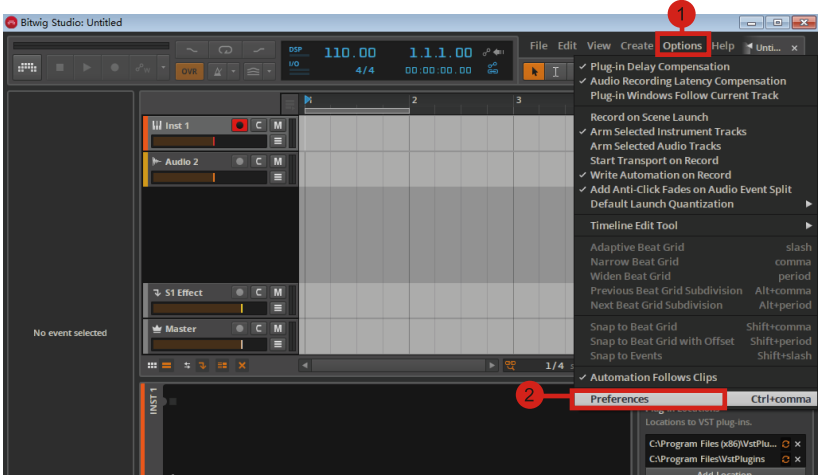




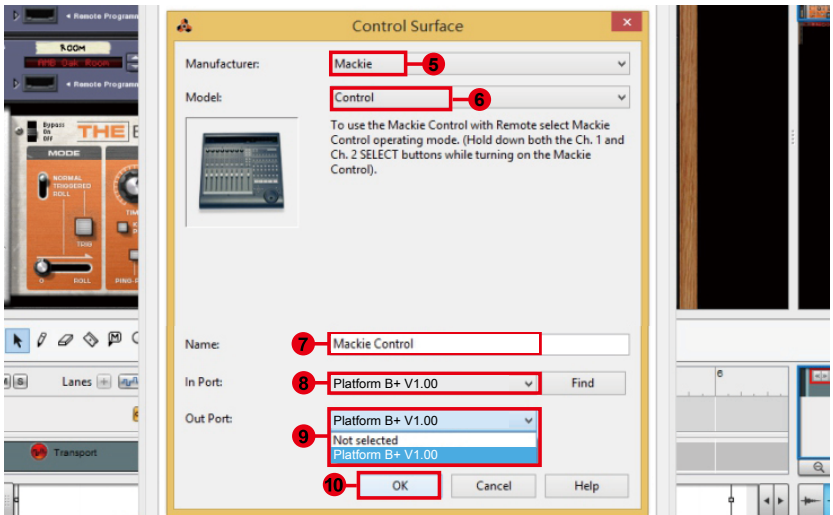
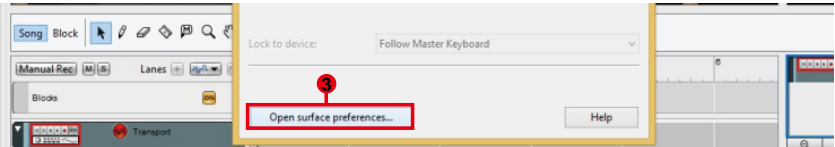
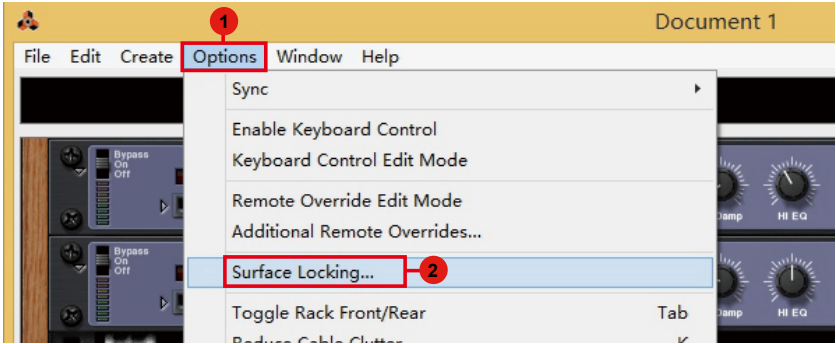
Samplitude



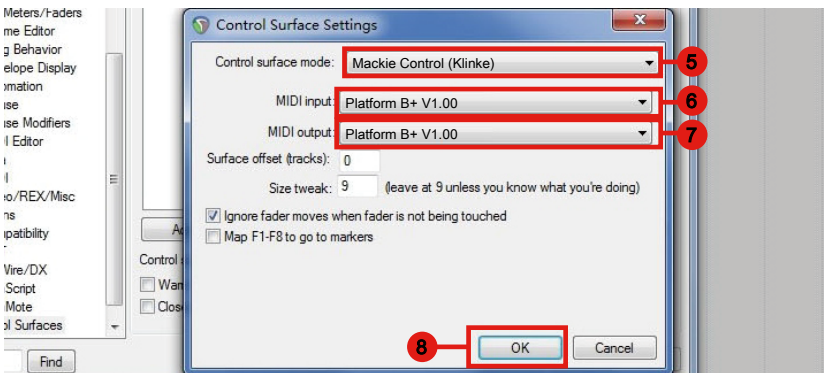
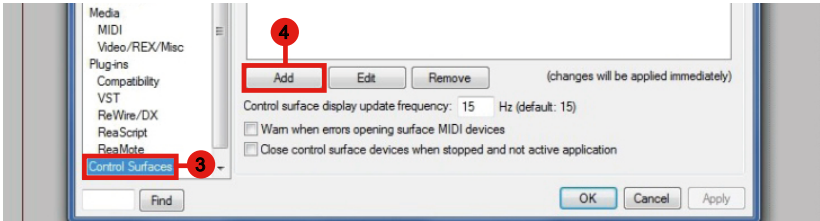
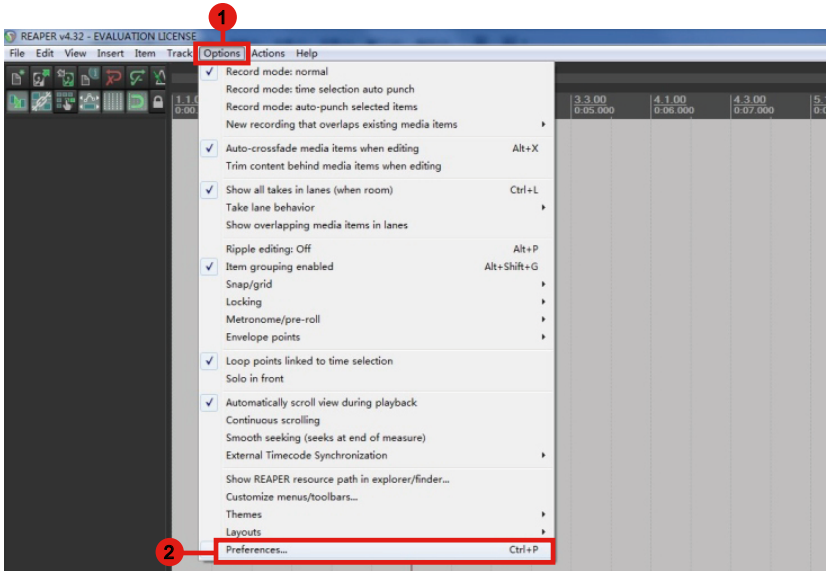




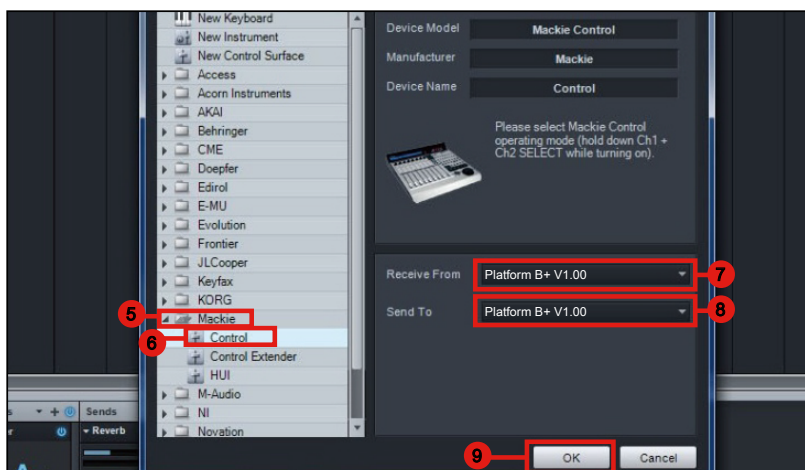
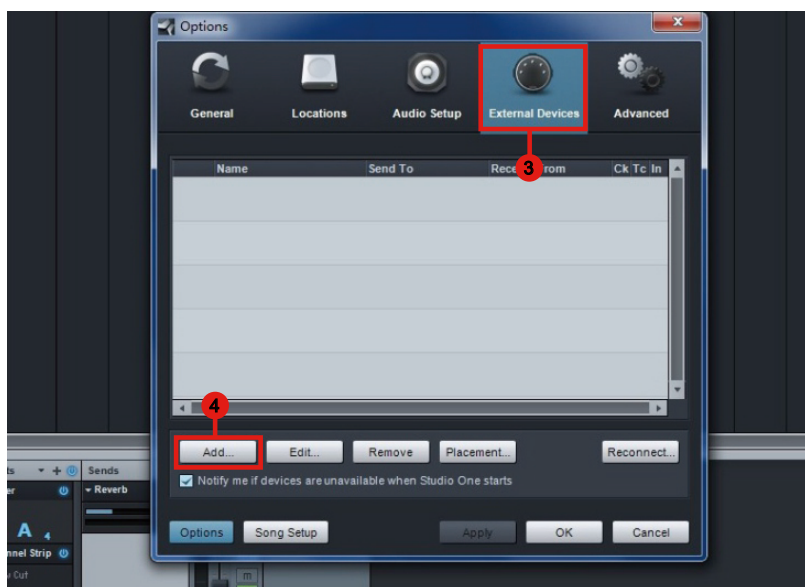
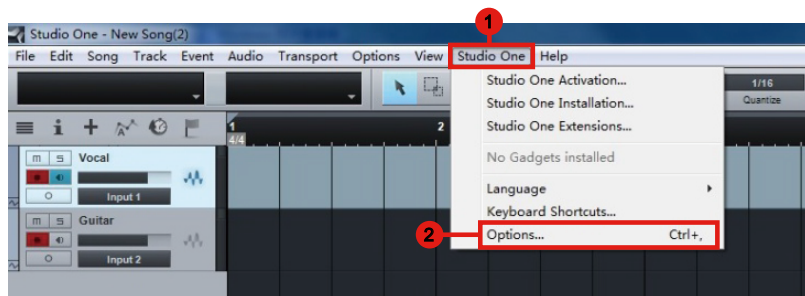
Reason



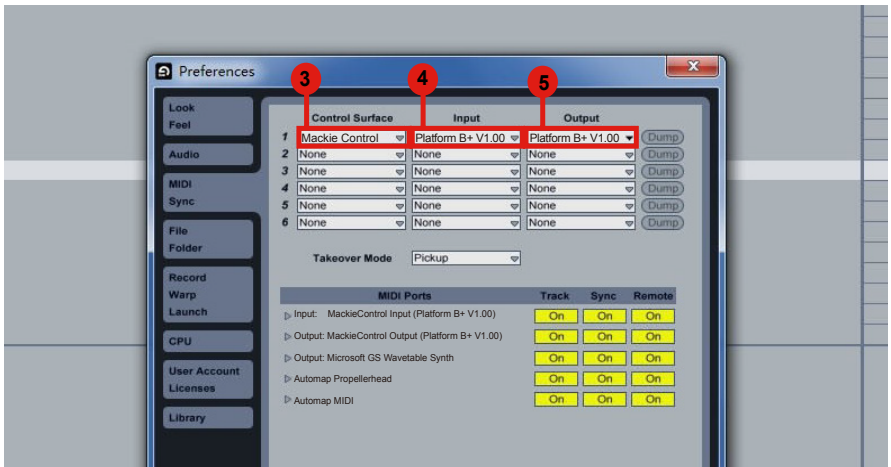
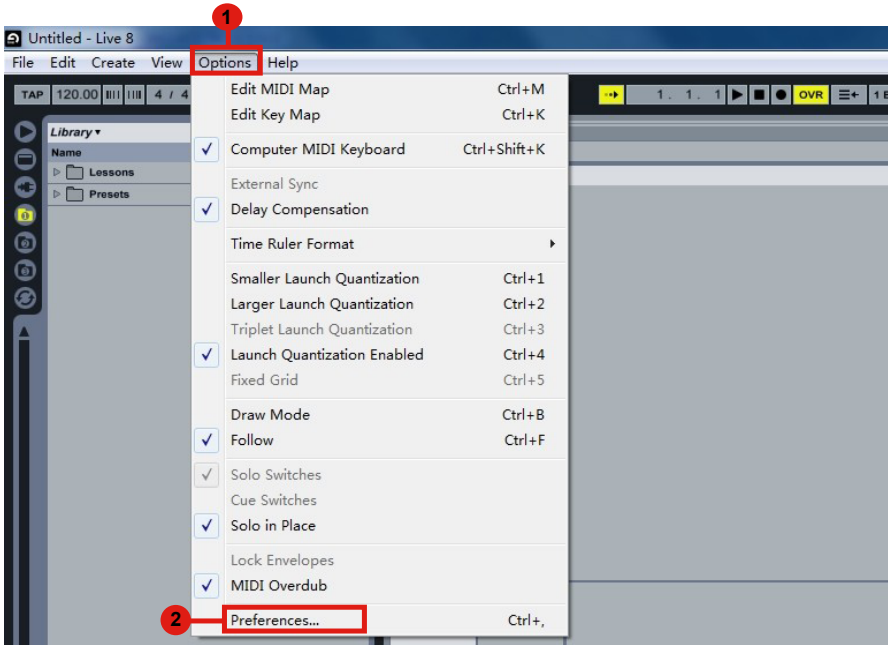
Reaper



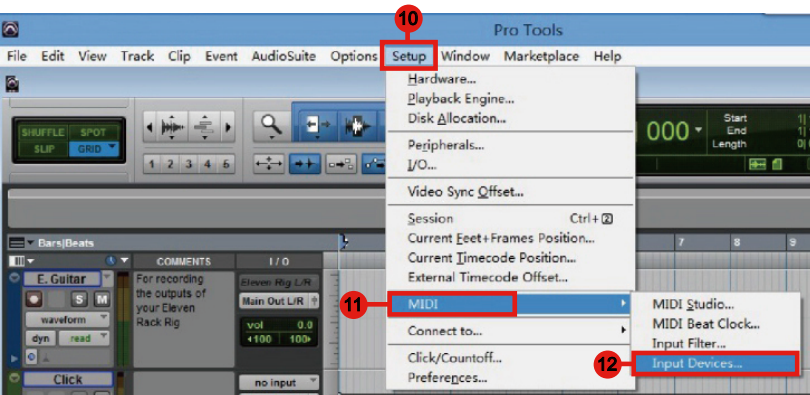
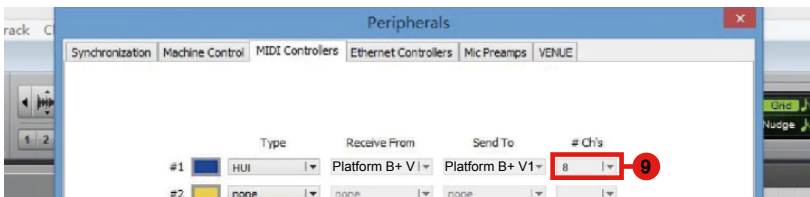
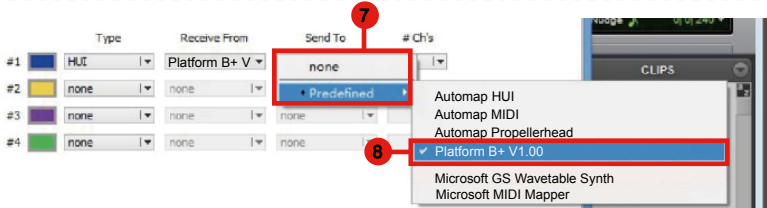
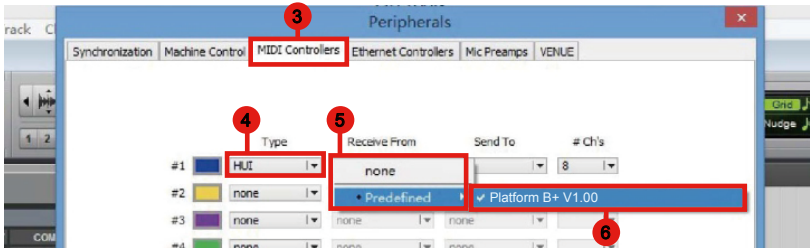
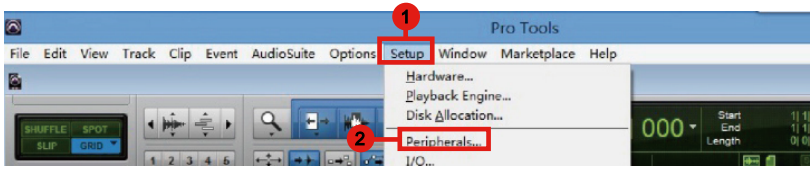
Studio One

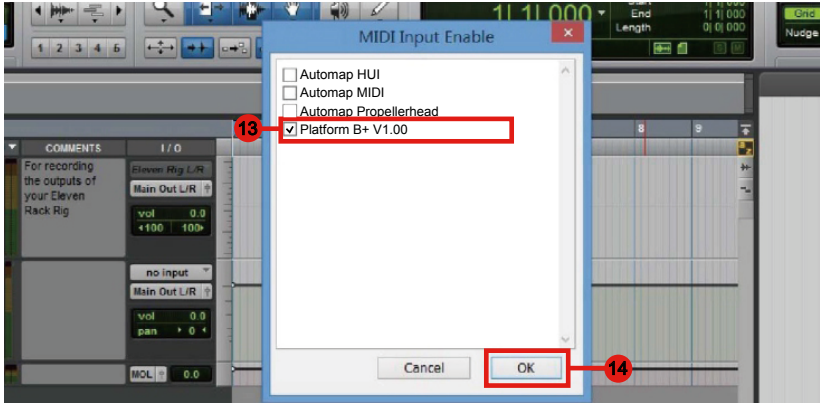


Ableton Live

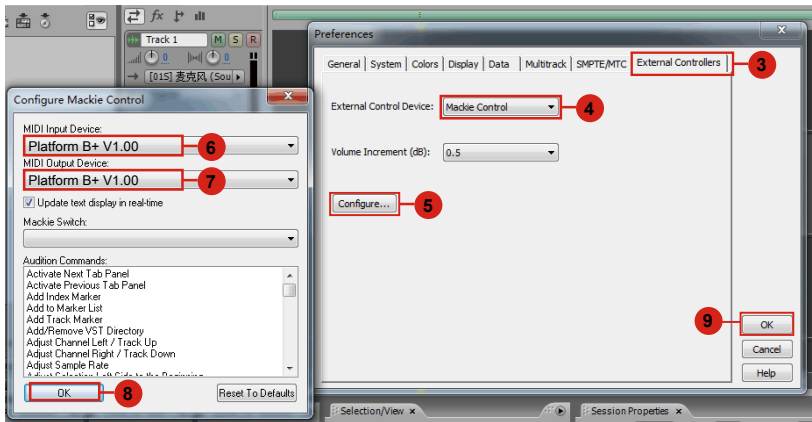
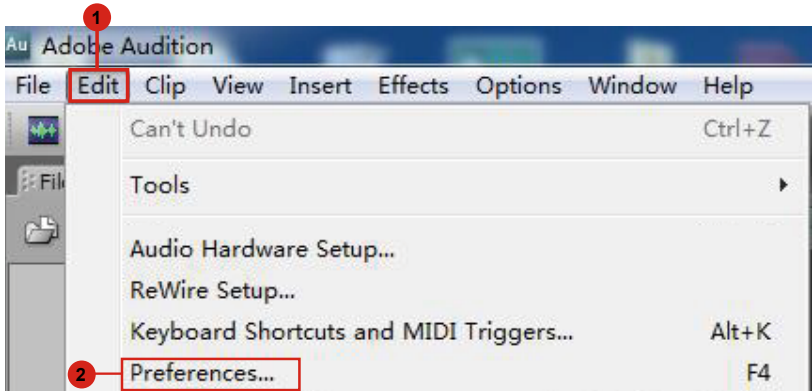


Pro Tools

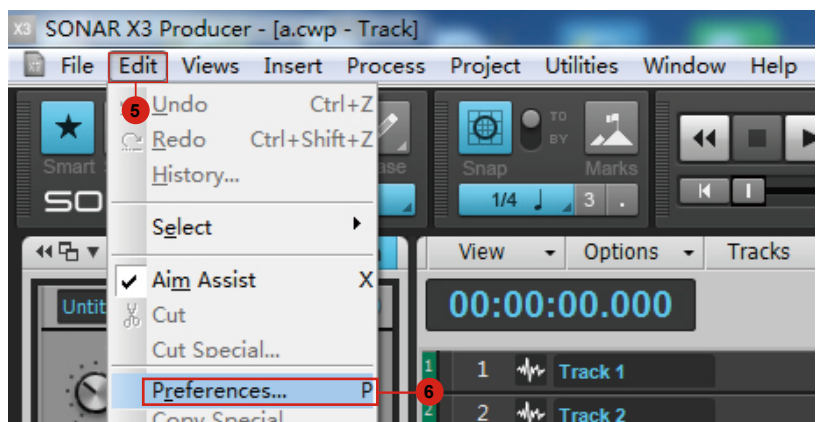
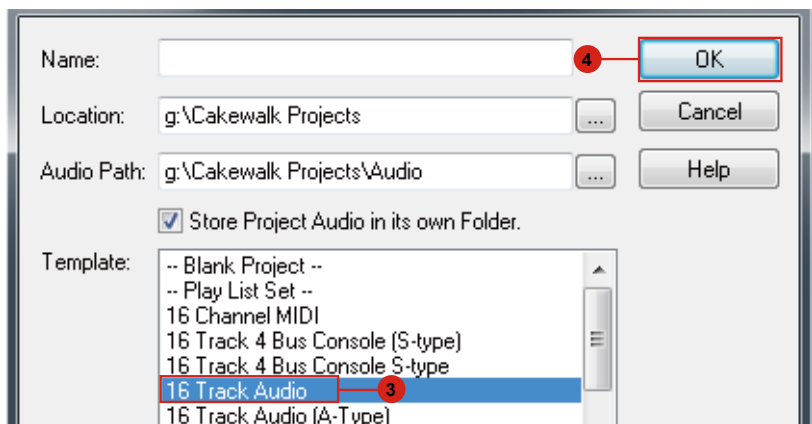
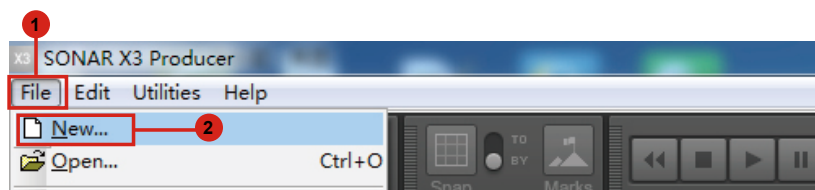


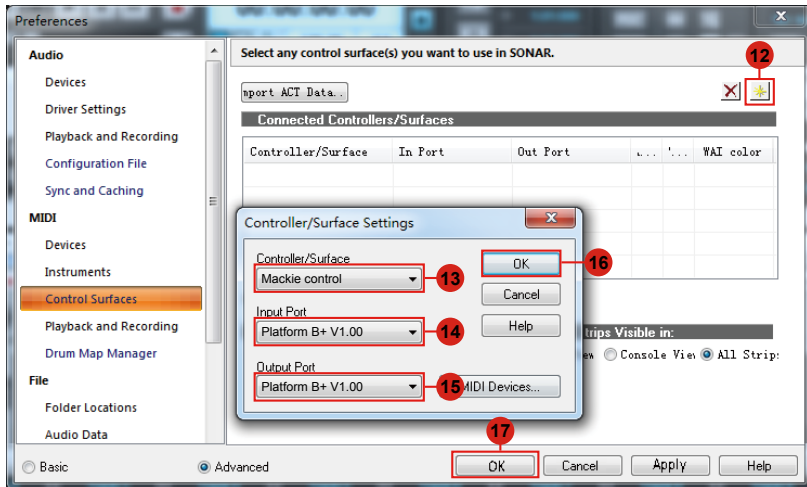
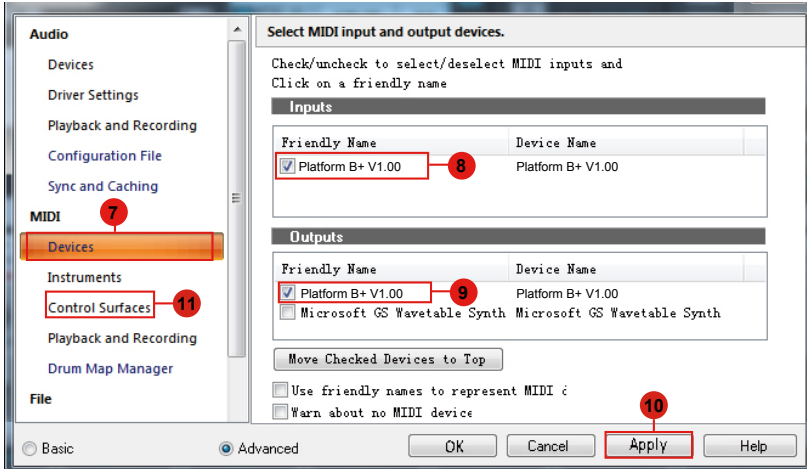


Audition



Sonar





Download the Mac iMap from your Personal User Page at www.iconproaudio.com

After you downloaded the file, please click it to start the installation process.



Platform B+
Serial Number: M6HO2

Unregister
this device

iMap for MacOS

Download The Latest

iMap for Windows

Download The Latest

iMap for MacOS

(FOR OLD OVERLAYS ONLY)

Download The Latest

iMap for Windows

(FOR OLD OVERLAYS ONLY)

Download The Latest

Diagram 1

1. iMap™ Software for Mac OS X

Please follow the procedures below step-by-step to launch your iMap™ software to Mac OS X.

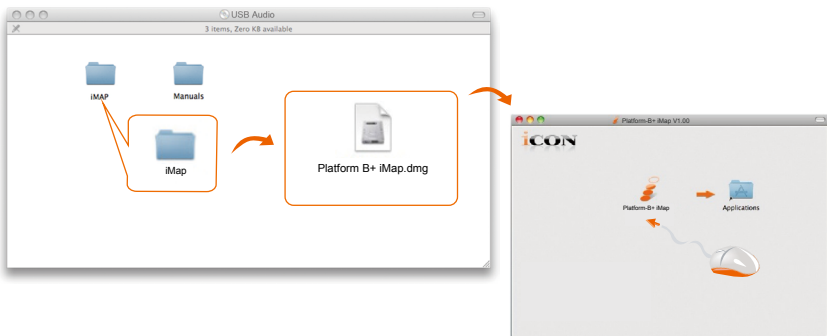


Diagram 2

Tip: By “drag and drop” the “Platform B+” icon into the “Applications” folder, you could create a “iMap” shortcut on your Mac’s desktop.

Installing iMap™ Software for Windows

Please follow the procedures below step-by-step to install your iMap™ software.

1. Turn on your PC.

2. Download the Mac iMap from your Personal User Page at www.iconproaudio.com

After you downloaded the file, please click it to start the installation process.

3. Choose Install Location

Choose your preferred install location for iMap™ or use the default location and click “Next”.

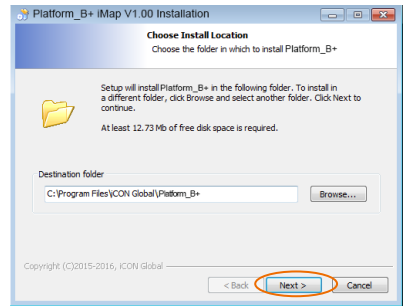


Diagram 3

4. Select shortcut

Select the start menu folder in which you would like to create the iMap™ shortcut. Then click “Next”.

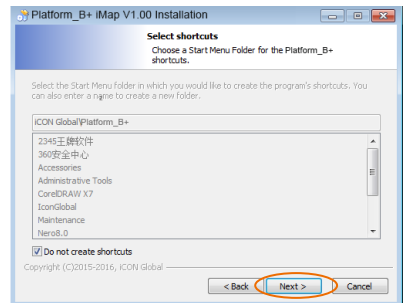


Diagram 4

5. Create a shortcut on your desktop

Please untick the box if you do not want to place a shortcut icon on your desktop for iMap™, otherwise click “Install”.

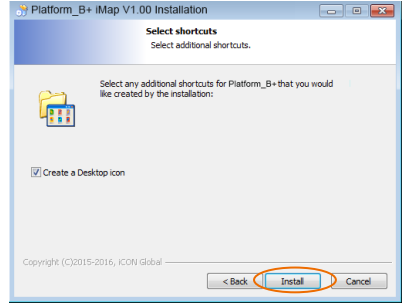


Diagram 5

6. iMap™ started to install

The iMap™ installation has now started, wait for it to finish. Then click “Finish”.

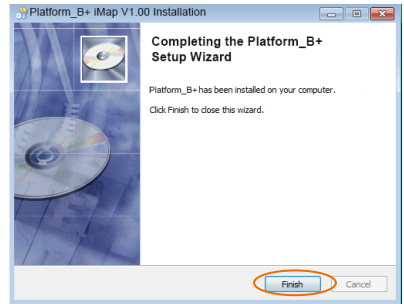


Diagram 6

7. Click the iMap logo on your desktop to launch the iMap software.

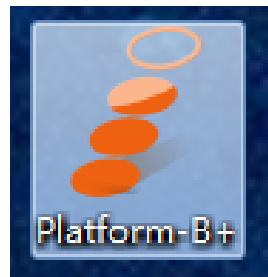


Diagram 7

Assigning DAW Mode (Mackie Control/HUI) or Defining MIDI Functions with iMap™

There are two different methods for setting up your Platform B+. In general, it is simpler and faster to set the device to pre-mapped DAW modes with Mackie Control/LogicPro/HUI protocol, depended on which DAW you use. The device has built-in DAW Mackie/LogicPro/HUI protocols as follows:

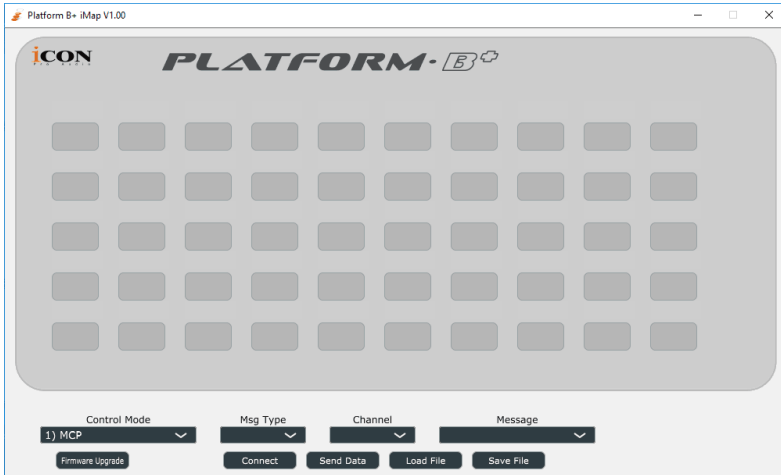
Refer to the below table for different DAW mode selection.

MCP	LogicPro	HUI	UserDefine
1. Nuendo/Cubase	Logic Pro	ProTools	User self mapping with iMap
2. Digital Performer			
3. FL Studio			
4. SamplitudePro			
5. Reaper			
6. Studio One			
7. Bitwig			
8. Reasons			
9. Sonar			
10. Audition			
11. Ableton Live			

Select User define

Or you can define each control element on your Platform B+ with your own MIDI messages provided in iMap's function pull-down menu. However, unless you fully understand the MIDI structure of your DAW, this can be very troubling to set up. We strongly recommend that you use the pre-mapped DAW modes, as they are programmed according to the most popular user preferences, and are most likely to suit your needs.

Assigning DAW Mode (Mackie control/ LogicPro/HUI) Using iMap™



iMap™ Platform B+ software panel

To begin DAW mode setup, connect your Platform B+ with iMap. Follow the steps below:

1. **Connect Platform B+ to your Mac/PC.**
2. **Launch iMap and click “Connect Device”.**

Note: If your Platform B+ is not connected to your Mac/PC, the message “There are no MIDI input devices” will appear. Please connect Platform B+ to your Mac/PC with the provided USB cable.

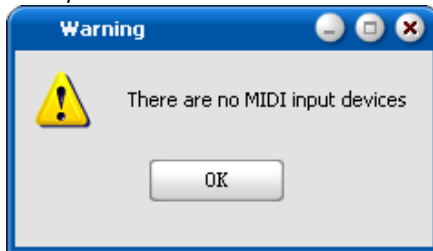
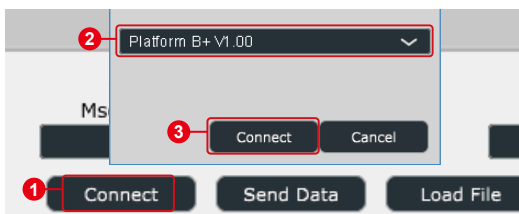


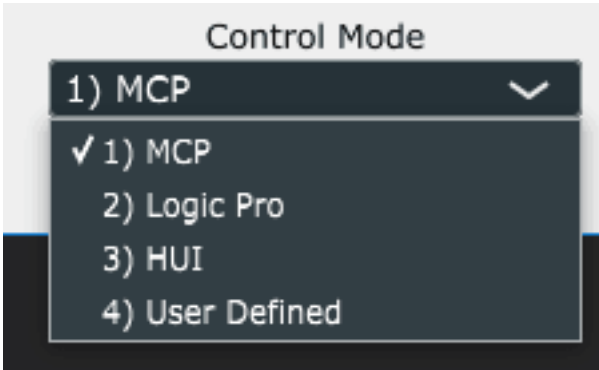
Diagram 8

3. **Select “Platform B+” at the pop-up menu as your MIDI out device.**



4. According to your DAW, select the DAW Mackie/HUI protocol mode from the “Mode” pull-down menu. Different DAW modes are listed below:

1. MCP
2. LogicPro
3. HUI



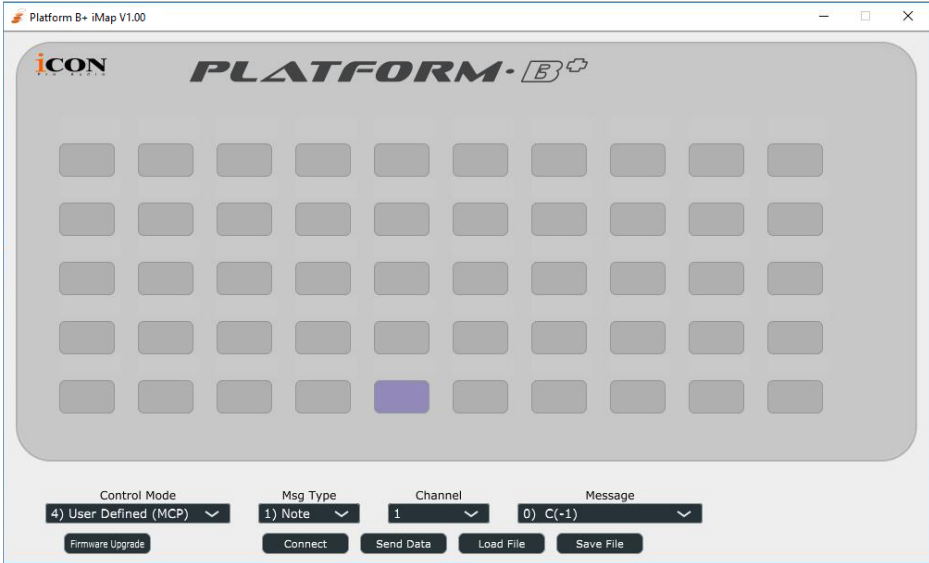
***Tip:** You may also use the hardware to select DAW instead of through iMap. Please refer to P.37 for instructions.*

5. After you have finished creating all settings, click “Send Data”.

6. Close iMap.

***(Note:** Please make sure you have disconnected from the USB connection after setup if you are using Platform B+ with Platform M+.)*

Assigning MIDI Messages in User-Defined Mode Using iMap™



iMap™ Platform B+ software panel

To begin the “User defines” mode setup, let make the connection of your Platform B+ with iMap. Please follow the below steps:

- 1. **Connect Platform B+ to your Mac/PC.**
- 2. **Launch iMap and click “Connect Device” button.**

Note: If your Platform B+ is not connected to your Mac/PC, the message “There are no MIDI input devices” will appear. Please connect Platform B+ to your Mac/PC with the provided USB cable.

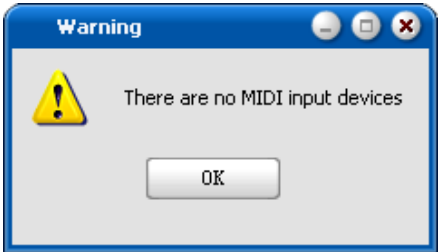
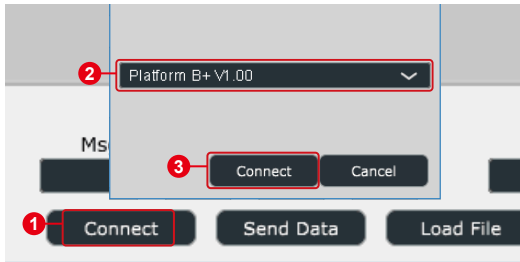
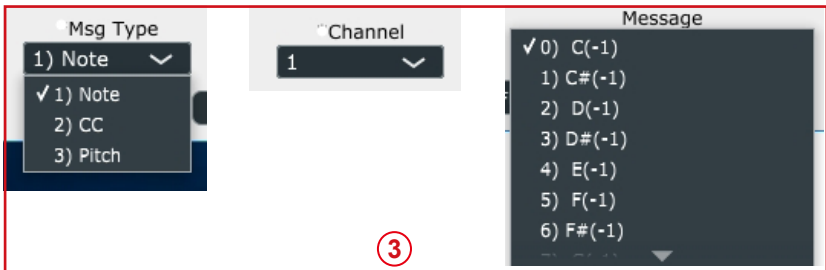
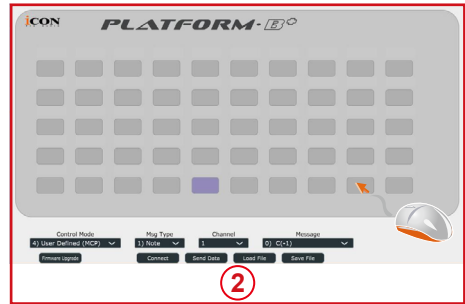
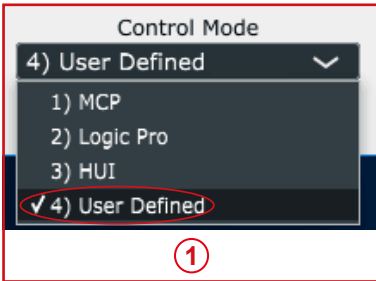


Diagram 9

3. Select “Platform B+” at the pop-up menu as your MIDI out device.



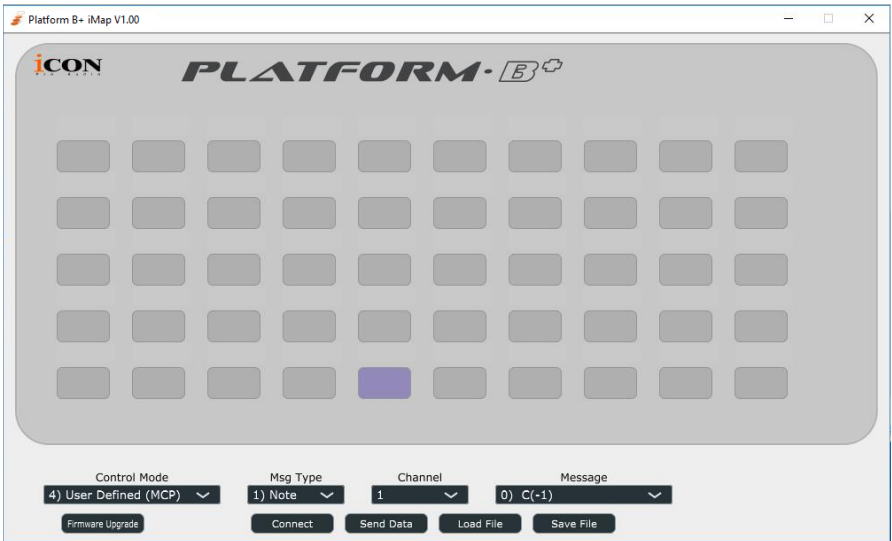
4. ① Select the “User Define” mode. ② Then select the control elements (the buttons) that you would like to assign a new midi function. ③ After selecting a control element, select the mapping value you want, from the pull down menu of "Msg Type", "Channel", and "Message". Please see below for each control element setting in User-Defined Mode.



5. After you have finished all setting, click “Send Date” button.
6. Close iMap.

Control Element Setup in User-Defined Mode

iMap™ Platform B+ software panel

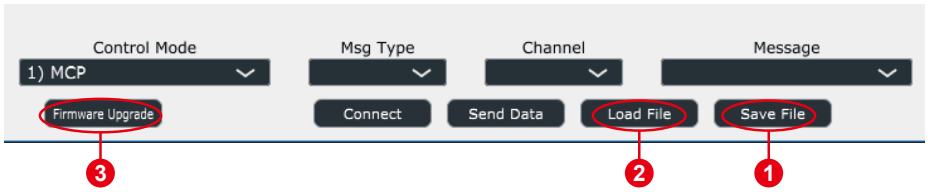


You may re-assign each button with different function via iMap. Follow the procedures below for the assignment.

- 1. Connect Platform B directly to your PC/Mac with the USB connection.*
- 2. Launch iMap software.*
- 3. Click the "Connect" button and select "Platform B+ V1.00", then click "OK"*
- 4. Click a button to make an assignment; it should turn blue.*
- 5. Select a "Control Mode" according to the DAW you are using.*
- 6. Select a function from the drop down "Function" menu.*
- 7. Repeat steps 4 & 6 to assign functions to all the other buttons.*
- 8. Click the "Send Data" button after completing assignment.*

Please refer to the appendix for the function list with different control modes.

Other Functions in iMap™



1. “Save file” button

Click this button to save your current settings for the Platform B+. The file is an “.Platform B+” file.

2. “Load file” button

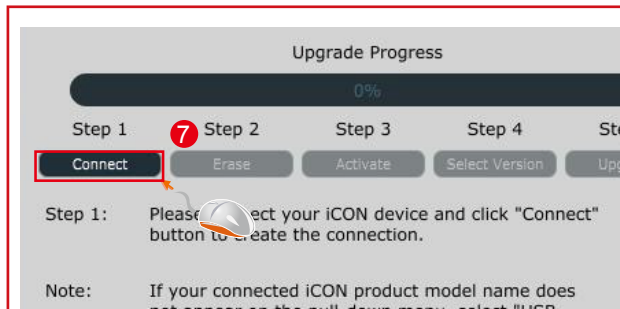
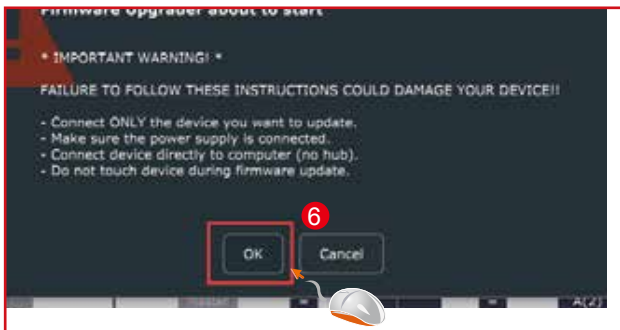
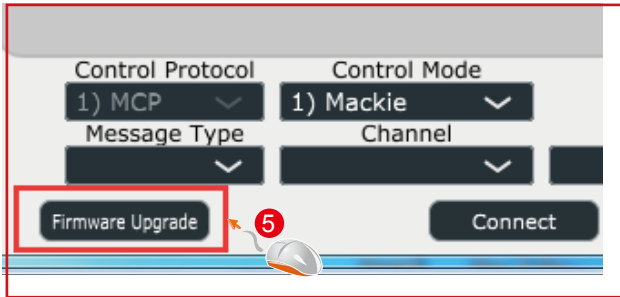
Click this button to load a previously saved “.Platform B+” setting file for your Platform B+.

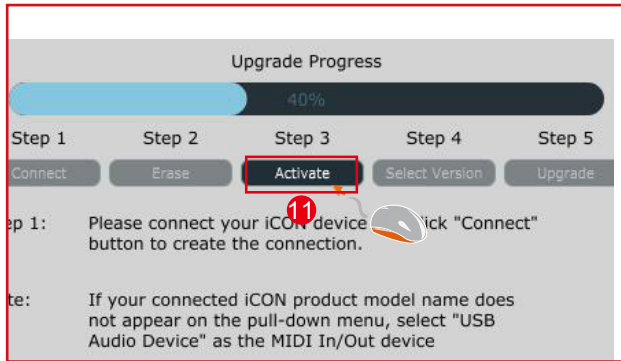
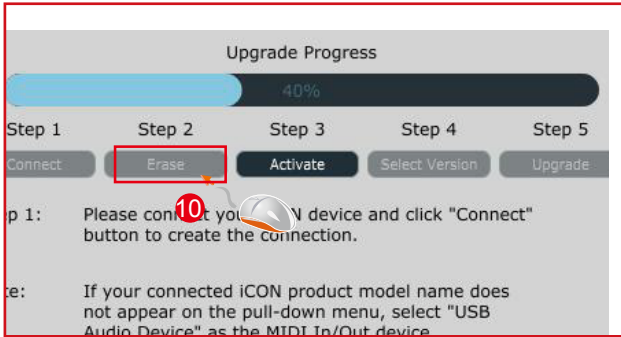
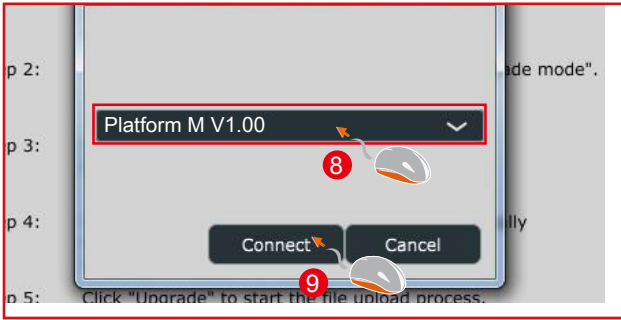
3. “Firmware Upgrade” button

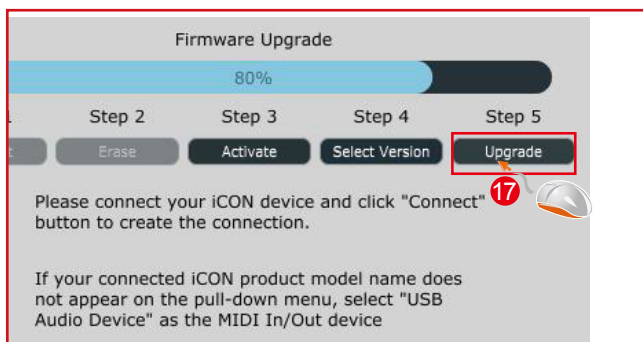
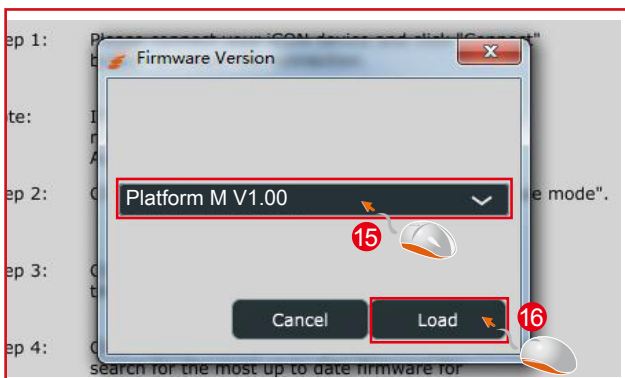
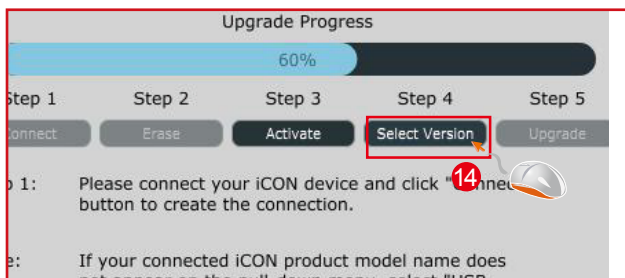
Click this button to enter into the firmware upgrade window for Platform B+. Please refer to P.63 for the firmware upgrade procedure.

Firmware upgrade

Platform B+ functional firmware upload procedure







Restore the factory default settings

To restore your Platform B+ settings to factory default, simply launch iMap and import the original setting (i.e. without making any changes) to the device by the following steps.

1. Connect Platform Platform B+ with the provided USB cable and launch iMap software.
2. Click the "MIDI Device" button and select "Platform B+" as the MIDI input and output device.
Note: *If Platform B+ does not appear on the pull down menu, select USB audio as the MIDI I/O device.*
3. Click "Send Data" to upload the setting to your Platform B+.
4. Close iMap, and then turn the Platform B+ power of off & on again.

Specifications

Connector:	To computer	USB connector
	To extender	USB connector (B-Type)
Power supply:		12V/0.35A DC
Current consumption:		2.0A or less
Weight:		1.46kg (3.22lb)
Dimensions:		335(L) x 196(W) x 41(H)mm
		13.2"(L) x 7.7"(W) x 1.6"(H)

Services

If your Platform B+ needs servicing, follow these instructions.

Check our online help centre at <http://support.iconproaudio.com/hc/en-us>, for information, knowledge, and downloads such as:

1. FAQ
2. Download
3. Learn More
4. Forum

Very often you will find solutions on these pages. If you don't find a solution, create a support ticket at our online Help Center at the link below, and our technical support team will assist you as soon as we can.

Navigate to <http://support.iconproaudio.com/hc/en-us> and then sign in to submit a ticket.

As soon as you have submitted an inquiry ticket, our support team will assist you to resolve the problem with your ICON ProAudio device as soon as possible.

To send defective products for service:

1. Ensure the problem is not related to operation error or external system devices.
2. Keep this owner's manual. We don't need it to repair the unit.
3. Pack the unit in its original packaging including end card and box. This is very important. If you have lost the packaging, please make sure you have packed the unit properly. ICON is not responsible for any damage that occurs due to non-factory packing.
4. Ship to the ICON tech support center or the local return authorization. See our service centers and distributor service points at the link below:

If you are located in North America
Send the product to:

ICON Service Centre
611 Potomac PL Ste 102
Smyrna, 37167-5655 Tennessee.
United States
Tel. : +1 615 540 989

If you are located in Hong Kong
Send the product to:

ASIA OFFICE:
Unit F, 15/F. , Fu Cheung Centre,
No. 5-7 Wong Chuk Yueng Street,
Fotan,
Sha Tin, N. T. , Hong Kong.

If you are located in Europe

Send the product to:

Sound Service
GmbH European
Headquarter Moriz-Seeler-Straße
3D-12489 Berlin
Telephone: +49 (0)30 707 130-0
Fax: +49 (0)30 707 130-189
E-Mail: info@sound-service.eu

5. For additional update information please visit our website at:

www.iconproaudio.com



天猫官方旗舰店



天猫店iconproaudio旗舰店

抖音号



抖音iCON艾肯

哔哩哔哩



B站iCONProAudio

微信公众号



微信号iCON-PRO

官方售后QQ



4006311312.114.qq.com

中国地区用户

Twitter



www.twitter.com/iconproaudio

Instagram



www.instagram.com/iconproaudio

Facebook



www.facebook.com/iconproaudio

Youtube



www.youtube.com/iconproaudio

Website



www.iconproaudio.com

Support



support.iconproaudio.com

Dashboard



iconproaudio.com/dashboard/

www.iconproaudio.com