



# QConEXG2




USB-MIDI Controller Station

MIDI/Audio control surface with motorized faders  
for production



User manual



	<p><b>CAUTION</b></p> <p>RISK OF ELECTRIC SHOCK DO NOT OPEN RISQUE DE CHOC ELECTRIQUE NE PAS OUVRIR</p> <p>CAUTION: TO REDUCE THE RISK OF ELECTRIC SHOCK DO NOT REMOVE COVER (OR BACK) NO USER-SERVICEABLE PARTS INSIDE REFER SERVICING TO QUALIFIED PERSONNEL</p> <p>ATTENTION: POUR EVITER LES RISQUES DE CHOC ELECTRIQUE: NE PAS ENLEVER LE COUVERCLE. AUCUN ENTRETIEN DE PIECES INTERIEURES PAR L'USAGER. CONFIER L'ENTRETIEN AU PERSONNEL QUALIFIE.</p> <p>AVIS: POUR EVITER LES RISQUES D'INCENDIE OU D'ELECTROCUTION, N'EXPOSEZ PAS CET ARTICLE A LA PLUIE OU A L'HUMIDITE</p>		
			<p>The lightning flash with arrowhead symbol within an equilateral triangle is intended to alert the user to the presence of uninsulated dangerous voltage within the product's enclosure, that may be of sufficient magnitude to electric shock to persons. Le symbol clair avec point de flèche à l'intérieur d'un triangle équilatéral est utilisé pour avertir l'utilisateur de la présence d'intérieur du coffret de voltage dangereux non isolé d'ampleur suffisante.</p> <p>The exclamation point within an equilateral triangle is intended to alert the user of the presence of important operating and maintenance (servicing) instructions in the literature accompanying the appliance. Le point d'exclamation à l'intérieur d'un triangle équilatéral est employé pour avertir les utilisateurs de la présence d'instructions importantes pour le fonctionnement et l'entretien (service) dans le livret d'instruction accompagnant l'appareil.</p>

## ***Important Safety Instructions***

1. Read this manual thoroughly before using this unit.
2. Keep this manual for future reference.
3. Take notice of and comply with all warnings included in the user's manual or indicated on the appliance.
4. Follow all instructions included in this manual.
5. Do not expose this unit to rain or moisture. Avoid having water or other liquids spilled on this unit.
6. When cleaning the cabinet or other parts of this appliance, use only a dry or slightly damp soft cloth.
7. Do not block any ventilation openings or interfere with the proper ventilation of this unit. Install in accordance with the manufacturer's instructions.
8. Do not use or store near any heat sources such as radiators, heat registers, stoves, or other heat-producing appliances.
9. Do not interfere with the safety purpose of the polarized or grounding-type plug. A polarized plug has two blades with one wider than the other. A grounding-type plug has two blades and a third grounding prong. These are designated for your safety. If the provided plug does not fit into your outlet, consult an electrician.
10. Protect the power cord from being walked on or otherwise damaged by items placed on or against them. Particular attention should be given to the plugs, receptacles, and the point where the cord exits the appliance.
11. To avoid the risk of electrical shock, do not touch any exposed wiring while the unit is in operation.
12. Only use attachments/accessories specified by the manufacturer.
13. Unplug this unit and all connected electrical equipment during lightning storms or when left unused a long period of time.
14. Refer all servicing to qualified service personnel. Servicing is required when the appliance has been damaged in any way or fails to operate normally.

**WARNING: To reduce the risk of fire or electric shock, do not expose this unit to rain or moisture**

# Contents

Introduction.....	4
What's in the package? .....	4
Register your ICON ProAudio product to your personal account .....	5
Features .....	6
Top Panel Layout.....	7
Rear Panel Layout.....	9
Bottom Panel Layout.....	10
Getting Started (Connected with QconEX G2 (1 - 3units)).....	11
Connecting Your QconPro G2 Controller.....	11
Cubase .....	14
Logic Pro .....	16
Pro Tools.....	18
Getting Started .....	20
Connecting Your QconEX G2 Controller .....	20
Cubase .....	22
Nuendo.....	23
Logic Pro .....	24
Samplitude.....	25
Bitwig.....	27
Reason .....	28
Reaper.....	29
Studio One.....	30
Ableton Live.....	31
Pro Tools.....	32
Audition.....	33
Sonar .....	34
Download the Mac iMap from your Personal User Page at www.iconproaudio.com.....	36
Installing iMap™ Software for Windows .....	37
iMap™ QconEX G2 software panel .....	39
Connections.....	40
Firmware upgrade .....	41
Restore the factory default settings.....	44
Specifications .....	45
Services.....	46

# ***Introduction***

Thank you for purchasing the ICON ProAudio QconEX G2 Midi/Audio control surface. We sincerely trust this product will provide years of satisfactory service, but if anything is not to your complete satisfaction, we will endeavor to make things right.

In these pages, you'll find a detailed description of the features of the QconEX G2, as well as a guided tour through its front and rear panels, step-by-step instructions for their setup and use, and full specifications.

Please register the product on our website at the below link **[www. iconproaudio.com/registration](http://www.iconproaudio.com/registration)**:

Please follow the step by step procedures starting from input the device's serial number to your personal information etc. By registering your product online, you will entitle to several different services and after-sales supporting at our ACS help center by visting our website at **[www.iconproaudio.com](http://www.iconproaudio.com)**. Also, all the registered products under your account will be listed on your personal product page where you could get update information such as firmware/driver upgrade, software bundle and user manual download etc for your device.

As with most electronic devices, we strongly recommend you retain the original packaging. In the unlikely event the product must be returned for servicing, the original packaging (or reasonable equivalent) is required.

With proper care and adequate air circulation, your QconEX G2 will operate without any trouble for many years. We recommend that you record your serial number in the space provided below for future reference.

## ***What's in the package?***

- QconPro EX G2 USB-MIDI Controller x 1pc
- Quick Start Guide x 1
- USB2.0 Cable x 1
- AC adaptor x 1pc
- Screwdriver x 1

# ***Register your ICON ProAudio product to your personal account***

## **1. Check serial number of your device**

Please go to [http:// iconproaudio.com/registration](http://iconproaudio.com/registration) or scan the QR code below.



Input your device's serial number and the other information on the screen. Click "Submit".

A message will pop up showing your device information such as model name and its serial number - Click "Register this device to my account" or if you see any other message, please contact our after-sales service team

## **2. Log in to your personal account page for existing user or sign up for new user**

Existing user:                      Please log into your personal user page by inputing your user name and password.

New user:                              Please click "Sign Up" and fill in all the information.

## **3. Download all useful materials**

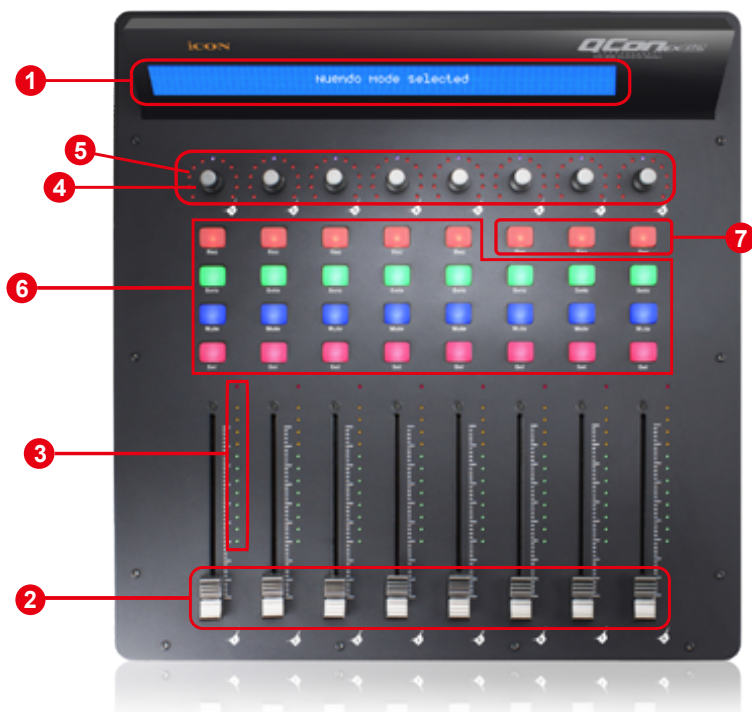
All your registered devices under your account will show on the page. Each product will be listed along with all its available files such as drivers, firmware, user manual in different languages and bundled software etc. for download. Please make sure you have download the necessary files such as driver before you begin device installation.

# Features



- 8 touch-sensitive motorized channel faders
- 12-segment LED level metering for channels
- 8 x dual function encoder knobs (Enter & rotate)
- 11-segments LED surrounding the encoders to indicate the rotating position
- Large backlit LCD to display channel name, control values etc. for each channel
- Illuminated buttons for each channel including Rec-enable, Solo, Mute, Select and Monitor
- MackieControl and HUI Universal emulation
- iMap - Self midi mapping software is provided for user-defined mode (MIDI Learn)
- Expandable to 32-channel control surface with 3units of QconEX G2 and a QconProG2
- User A & User B 1/4" TRS connectors for connecting with pedals
- Class-compliant with Windows XP, Vista (32-bit), Windows 7/8/10 (32-bit & 64-bit), and Mac OS X (IntelMac)
- USB 2.0 high speed connectivity
- Firmware upgrade available simply via USB connection and iMap software
- Robust aluminum and metal casing with Kensington lock port

# Top Panel Layout



**Note:** Function operates slightly difference between DAWs. Please refer to your DAW manual for each function and overlap the provided labeling template according to your currently used DAW. The following description is based on the functions that operate in Apple Logic.

## 1. LCD backlit display

The two-line backlit LCD display shows the parameter values as you adjust them and also provides feedback about channel selections, operating modes, and more.

## 2. Channel faders

The eight 100mm motorized faders are generally used for controlling the track volume of your DAW. Depending on your DAW, you may use the “Flip” button to switch the function of these faders to change other settings. They are all touch sensitive to allow override automation the moment you touch a fader. Also, they are motorized; they will automatically move to reflect the current level of the selected channels in your DAW application. Any automation recorded in a project will be reflected by the fader positions. Any parameter adjustments made with these faders will be displayed directly above on the LCD display.

### 3. Channel level metering

The 12-led meter shows the associated channel level.

### 4. Dual function encoders

The dual function encoders act as push-button and rotary controls.

When an encoder is pressed, it may be used to change modes of operation or to change what appears in the display above the channel strips. When an encoder is rotated, depending on its assigned function, it can be used to adjust a channel's pan, send level, or plug-in parameters.

### 5. Encoder LED

The 11-LED's surrounding the encoder light up to indicate the relative position of the rotation without having to look at your computer.

### 6. Control buttons

#### Recording channel control buttons section

**REC buttons** - Activate and deactivate the recording state of the associated channel. The switch will light red when the channel is armed.

**SOLO buttons** - Activate and deactivate the solo state of the associated channel. The switch will light green when the channel solo state is on and other channels will be muted. You can solo multiple channels by pressing SOLO buttons on additional channels.

**MUTE buttons** - Activate and deactivate the mute state of the associated channel. The switch will light blue when the channel is muted.

**SEL buttons** - The SEL buttons activate the associated channels in the DAW software in order to perform a specific operation (for example, when adjusting EQ with the ASSIGNABLE ENCODERS, the SEL switch will be used to choose the channel you want to adjust). The switch will light red when the channel is selected.

### 7. DAW Selector section

QconEX G2 has built-in Mackie Control, LogicPro protocols & HUI for different DAW's such as Cubase™, Samplitude™, Ableton Live™, Logic Pro™ and Pro Tools™. By selecting the correct Mackie control (HUI/LogicPro) protocol, QconEX G2 will automatically map the major functions and work seamlessly with that DAW.

**<< / >> buttons** - These arrow buttons are used to scroll through the mode list. The name of the mode will display on the LCD.

**DAW button** - Press to enter the mode selection.

To change your QconEX G2 Control mode, turn the power switch off and on to enter the Control selection mode. Select your desired mode from the list with the "<<" / ">>" buttons.

**(Note: You have to select the "Unit Number" for QconEX G2 before you select the DAW.)**



**Tips: The DAW button cannot be activated if DAW software is running.**

**Tips:** *QconEX G2 will memorize your last selected DAW mode and re-enter the same mode a few seconds after it has been switched on. (i.e. DAW mode selection is not needed if the last mode is being used.)*

## Rear Panel Layout



### 1. User A / User B 1/4" TRS connectors

These 1/4" TRS connectors are able to connect to foot pedals (SPD-01) to activate your selected functions. To set their parameters, select USER A and USER B parameters in Mackie control mode.

### 2. USB port

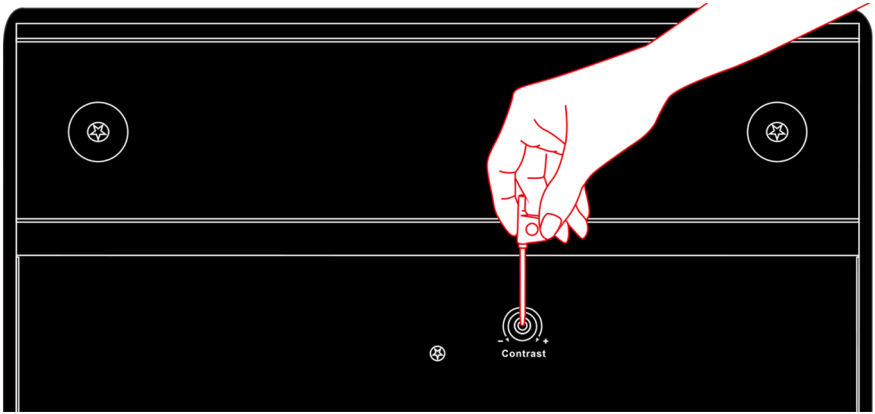
Connect your QconEX G2 to your Mac/PC via this USB port.

### 3. 12V/5A power adapter

Connect the provided power adapter here.

**(Note:** *QconEX G2 is not able to work without the provided power adapter connected. The USB bus power is not able to provide sufficient power supply for QconEX G2.*)

## Bottom Panel Layout



### 1. LCD contrast adjustment

Rotate the adjustment knob with the provided screwdriver to adjust the contrast of the LCD. Rotate anticlockwise to reduce the contrast and clockwise will increase.

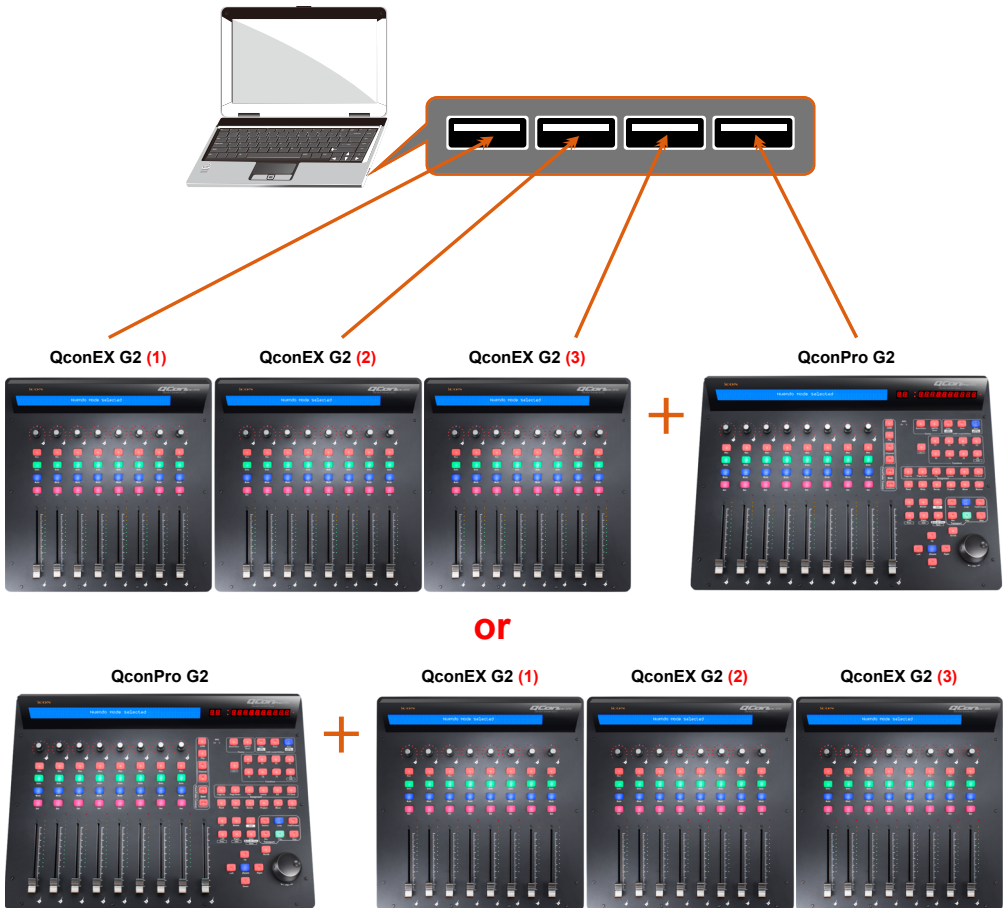
# Getting Started **(Connected with QconEX G2 (1 - 3units))**

## Connecting Your QconPro G2 Controller

### 1. Connect the QconPro G2 to your Mac/PC via the USB port

Choose a USB port on your Mac/PC and insert the wide (flat) end of the USB cable. Connect the cable's other end to the QconPro G2. Your Mac/PC should automatically "detect" the new hardware and notify you that it is ready to use.

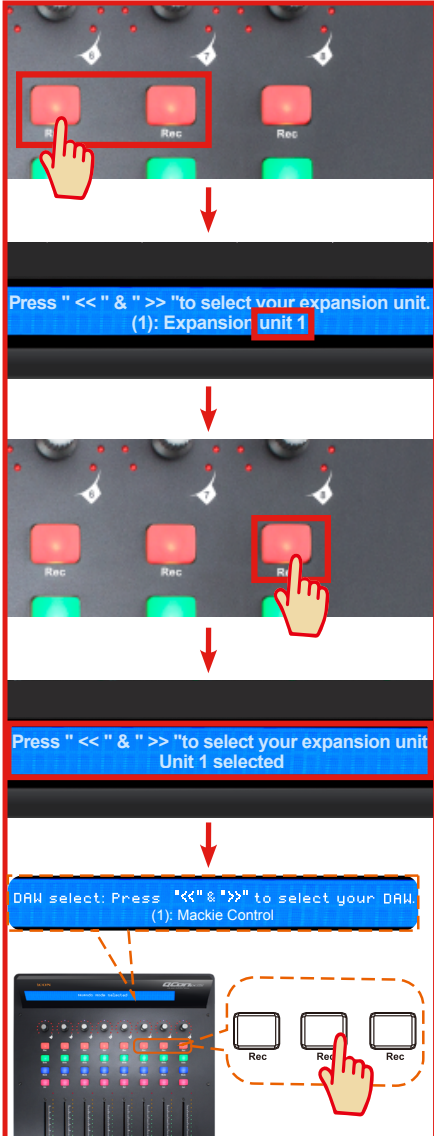
*(Tips: We recommended that you use ICON's OneHub USB hub, which allows you to connect up to 3 units of QconEX G2, if you are not connecting QconEX G2 directly to your computer's USB port.)*



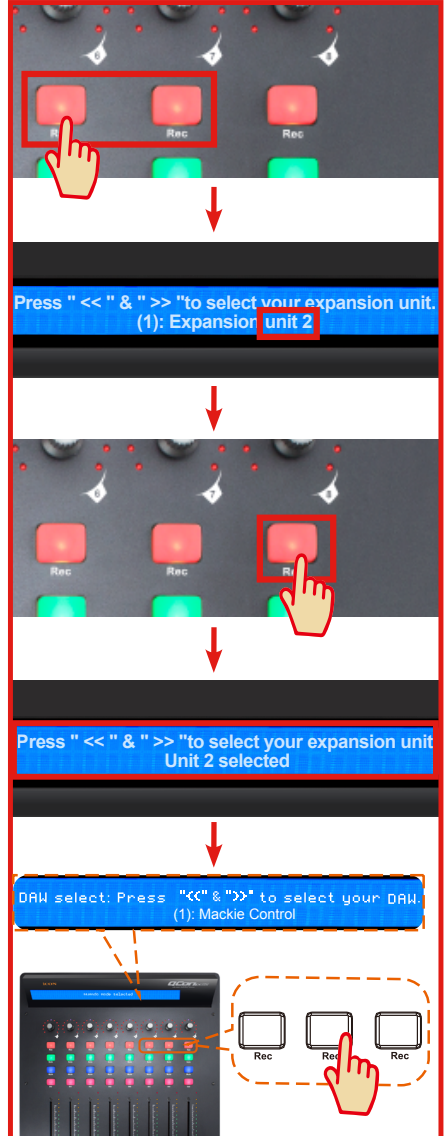
## 2. Select the DAW.

Press <</> to scroll through the mode list after pressed the "DAW" button to make the selection.

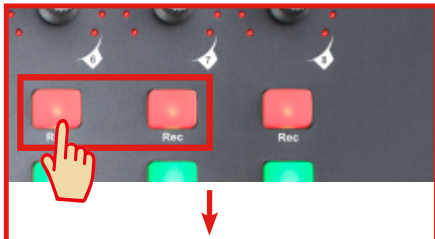
### 1 QconEX G2 (1)



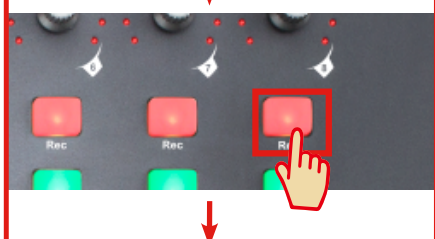
### 2 QconEX G2 (2)



### 3 QconEX G2 (3)

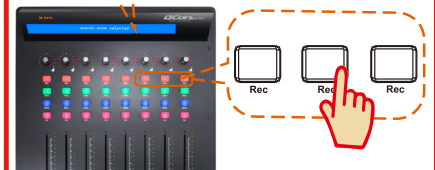


Press "<<" & ">>" to select your expansion unit.  
(1): Expansior unit 3



Press "<<" & ">>" to select your expansion unit  
Unit 3 selected

DAW select: Press "<<" & ">>" to select your DAW.  
(1): Mackie Control



### 4 QconPro G2



Press "<<" & ">>" to select unit(s) of Qcon Pro XS  
Three Qcon EX G2



Three Qcon EX G2 have installed

DAW select: Press "<<" & ">>" to select your DAW.  
(1): Mackie Control



### 3. Setup your DAW

The QconPro G2 has built-in Mackie Control, LogicPro and HUI protocol which will save you considerable trouble in setting up the device at your DAW. Simply add the “Mackie Control” or “HUI” device under the “MIDI Controller” on your software. After the Mackie Control or HUI device has been added, select QconPro G2 controller as your MIDI input and output device in your DAW.

For the software below, please use Mackie Control Nuendo/Cubase™, Samplitude™, Bitwig™, Reason™, Reaper™, Studio One™ and Ableton Live™.

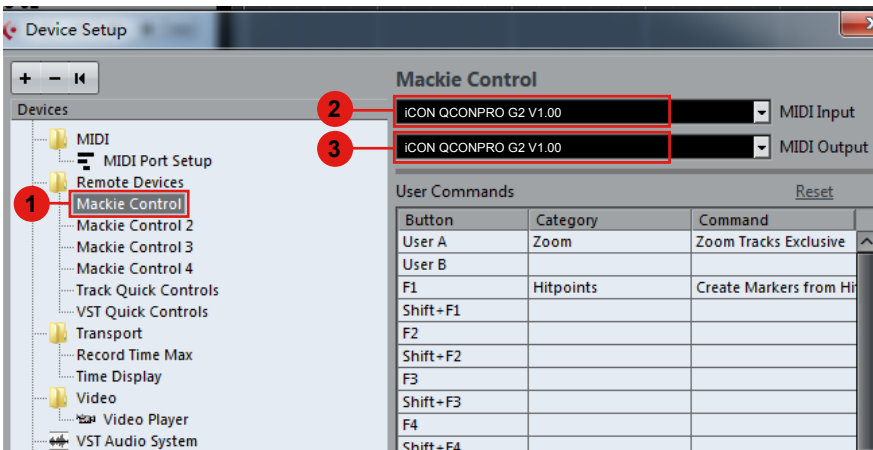
The software below, please use logic Pro Mackie Control

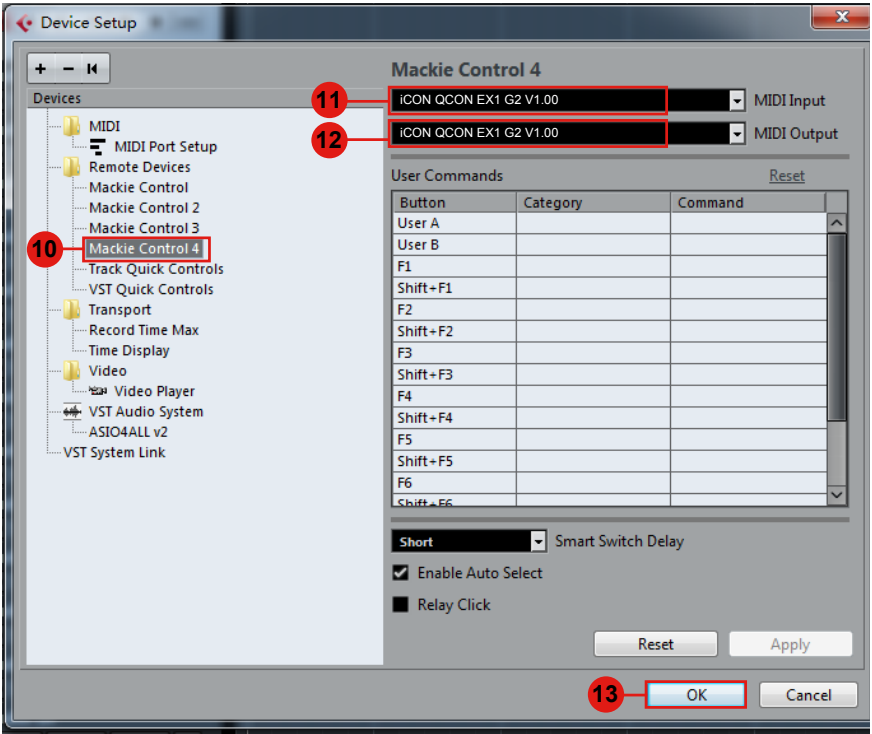
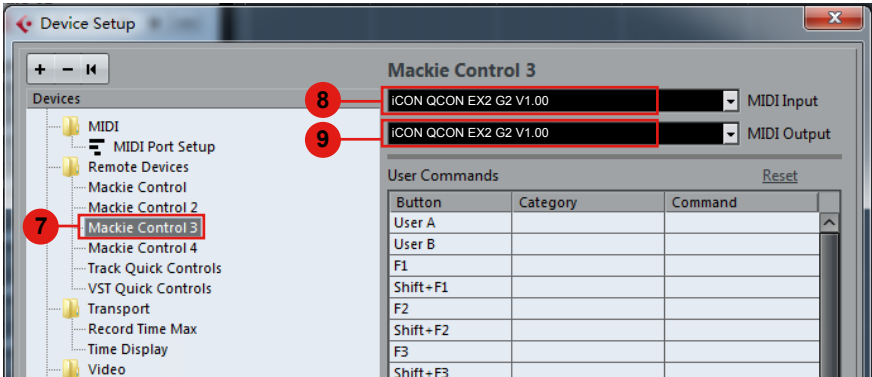
or the software below, please use HUI Pro Tools™.

*(Tips: You may also refer to our website at [www.iconproaudio.com](http://www.iconproaudio.com), where you'll find set up illustrations for different DAW's in each controller (QconEX G2) product page's “Setup demo” section.*

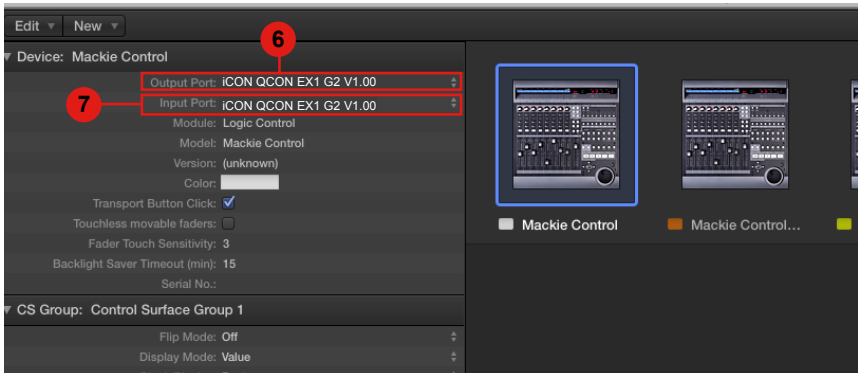
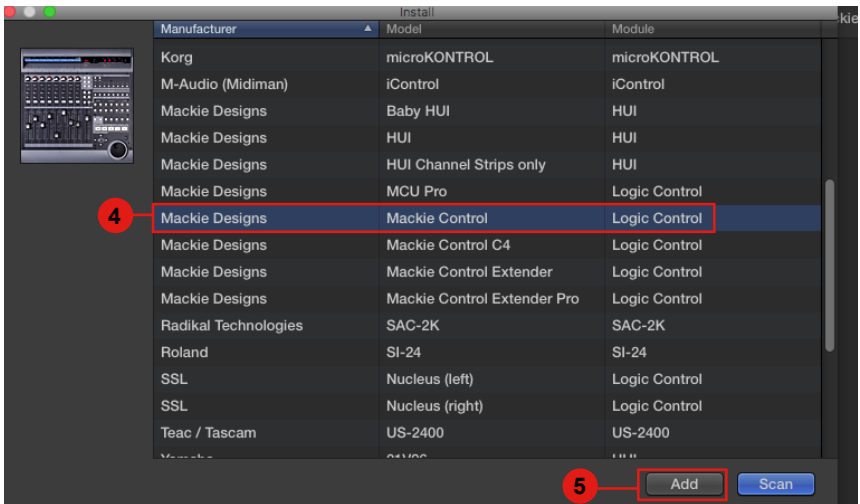
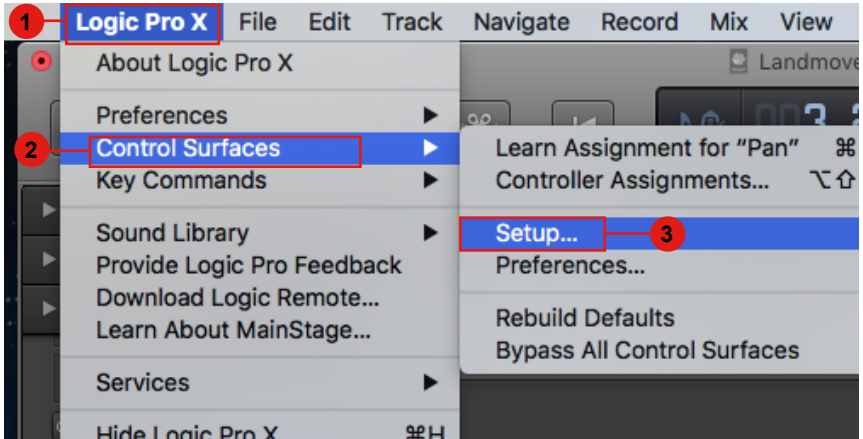
*For DAW's not on our setup demo list, please refer to your software user manual for hardware setup.)*

## Cubase

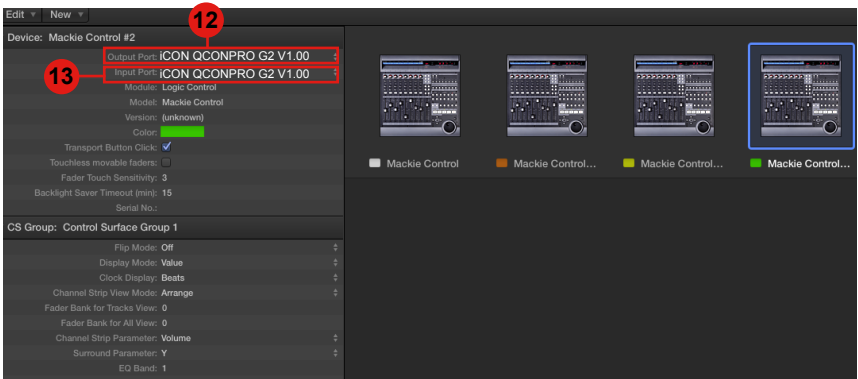
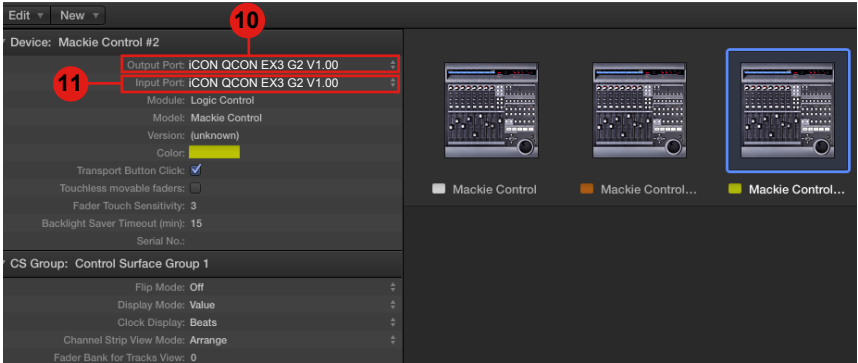




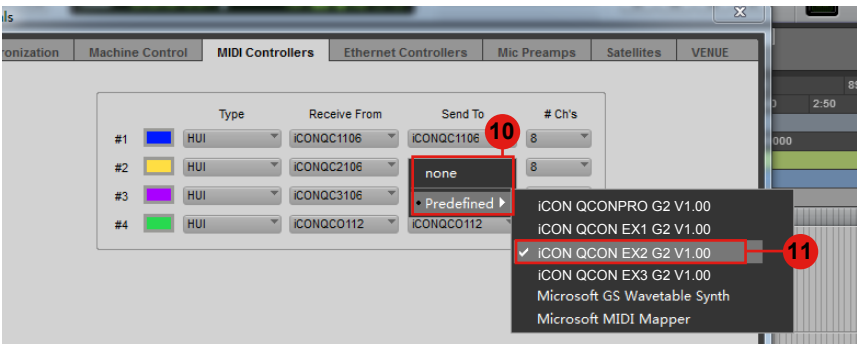
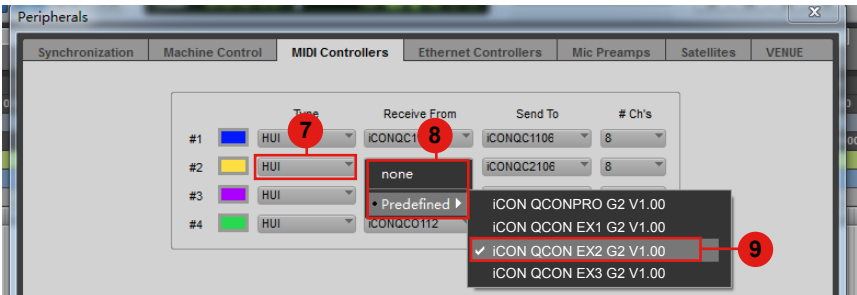
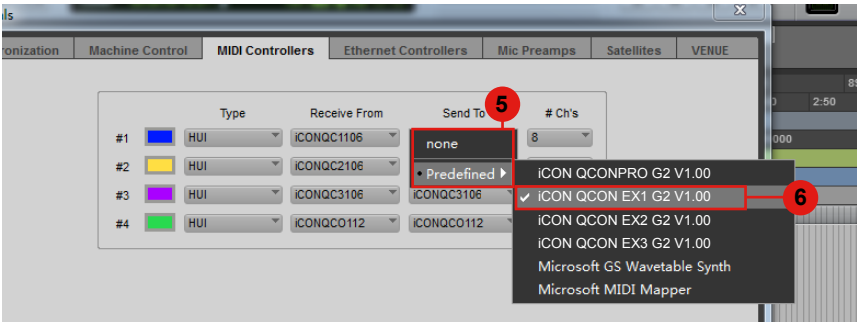
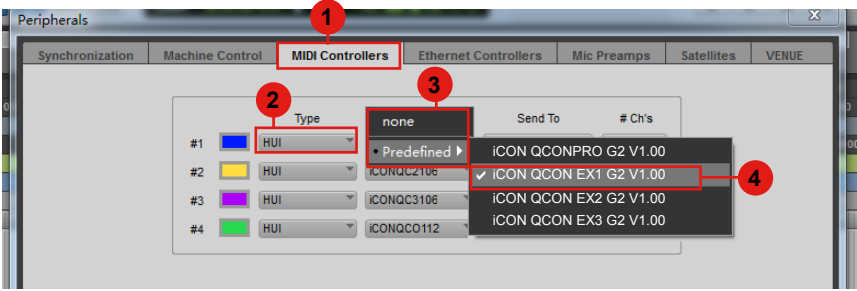
# Logic Pro

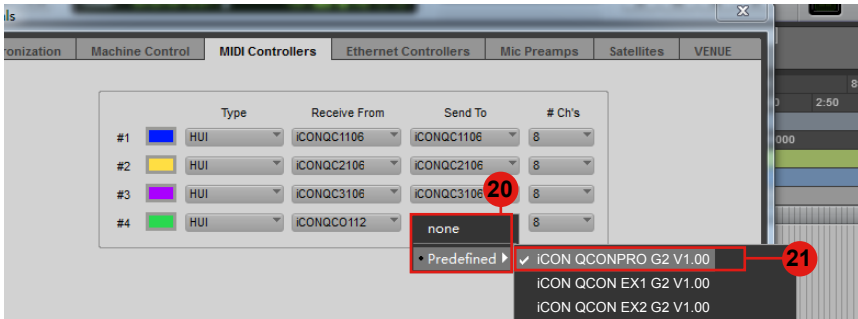
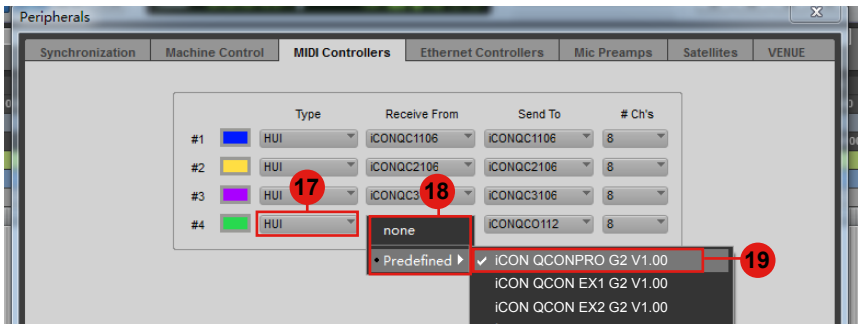
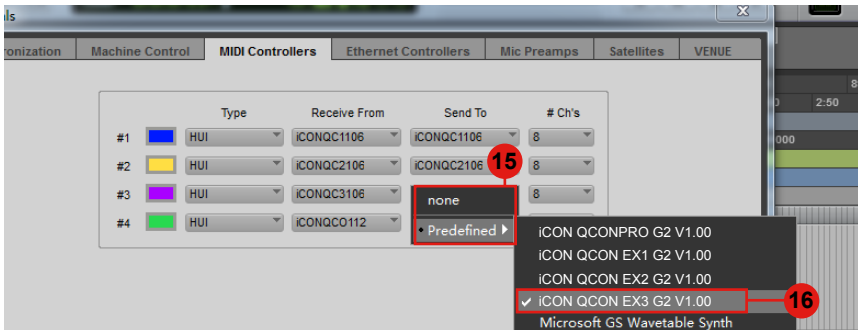
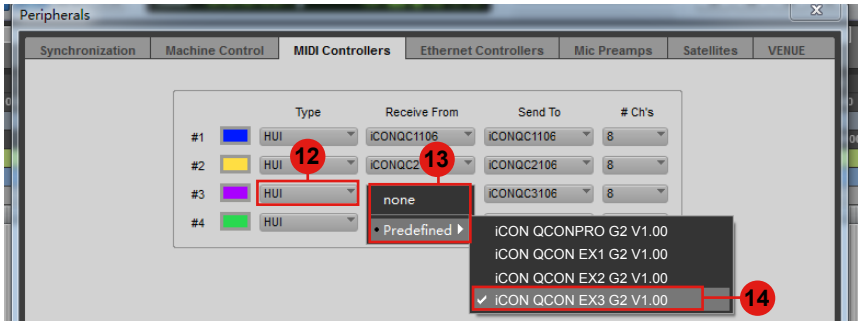






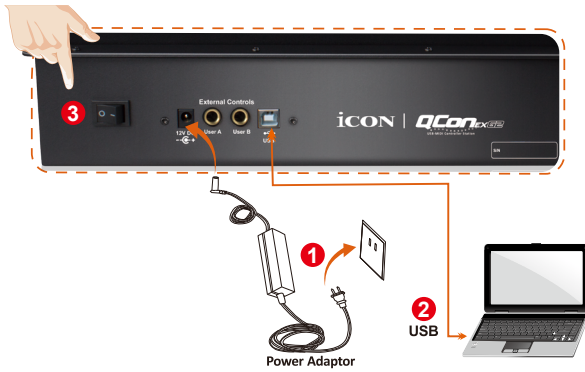
# Pro Tools





# Getting Started

## Connecting Your QconEX G2 Controller



- 1 Connect the QconEX G2 to your Mac/PC via the USB port.**

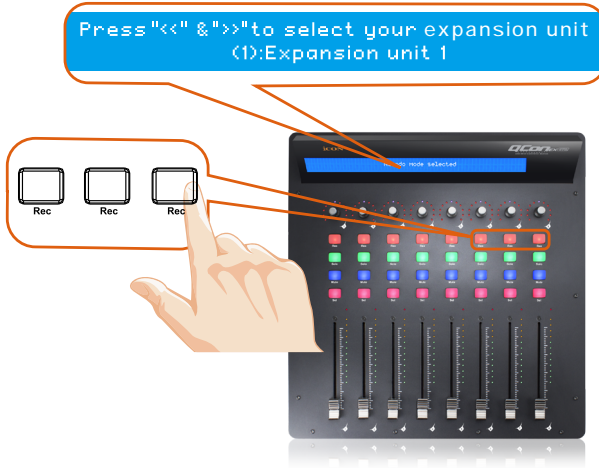
Choose a USB port on your Mac/PC and insert the wide (flat) end of the USB cable. Connect the cable's other end to the QconEX G2. Your Mac/PC should automatically “detect” the new hardware and notify you that it is ready to use.

(Tip: We recommended that you use ICON's OneHub USB hub, which allows you to connect up to 3 units of QconEX G2, if you are not connecting QconEX G2 directly to your computer's USB port)
- 2 Select the “Unit number”**

Press <</> to scroll through “Unit number 1 to 3” and press the “DAW” button to confirm. You may connect up to a maximum of 3 units of QconEX G2.

### 3 Select the DAW

Press <</> to scroll through the mode list after pressed the "DAW" button to make the selection.

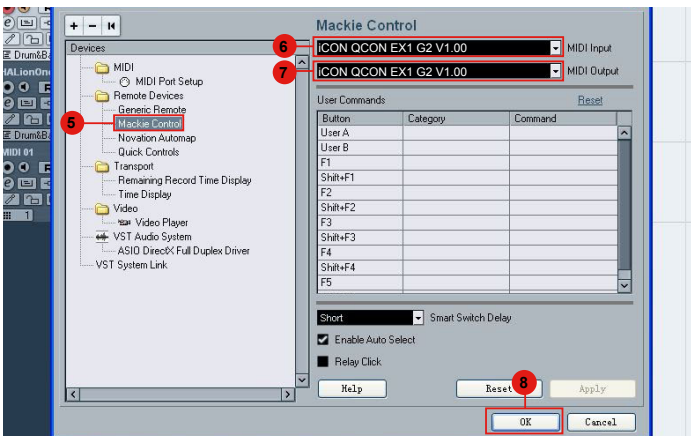
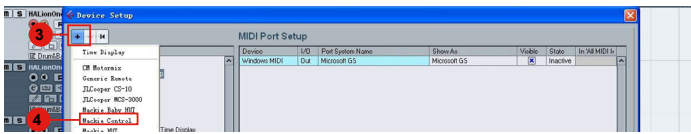
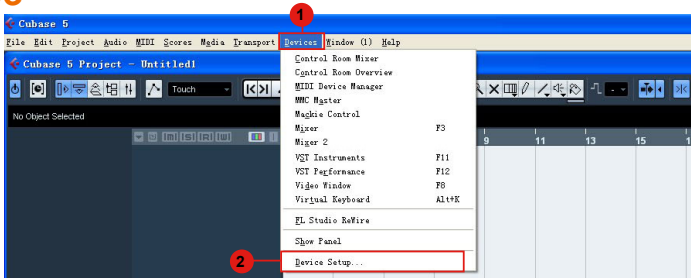


# 1. Setup your DAW

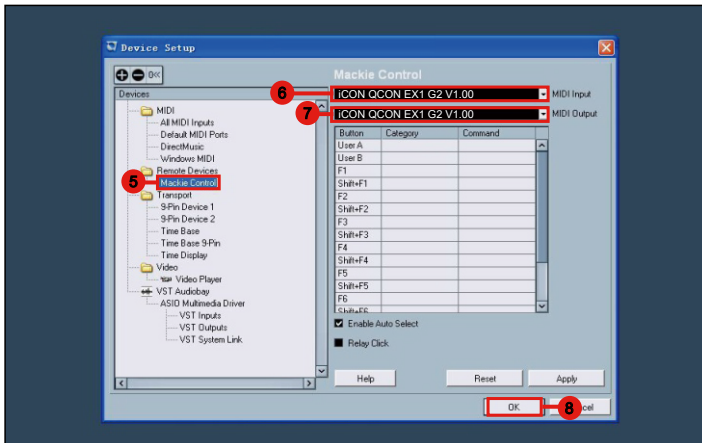
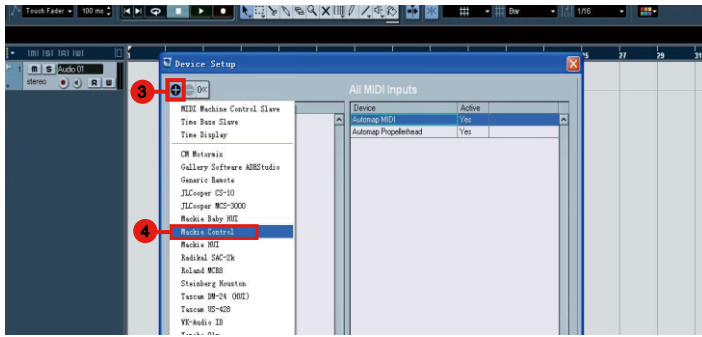
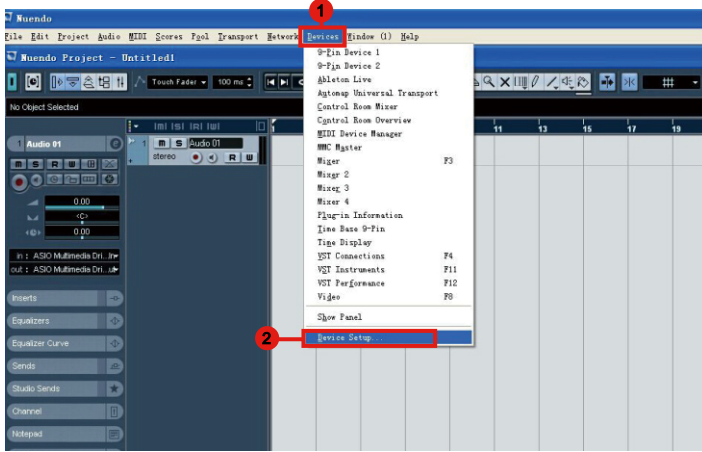
Activate the ICON ProAudioQconEX G2 controller in your DAW or MIDI software using “MIDI Setup” or “MIDI Devices”.  
For example: ,Cubase™ and Nuendo™, choose Mackie Control at the “Device List”.

**(Note: Every application does this a little differently, so refer to your software user manual for the settings.)**

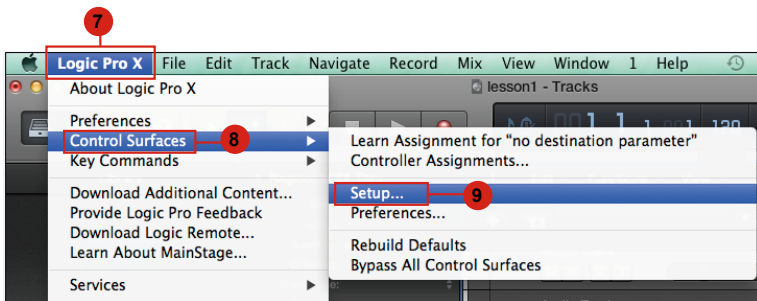
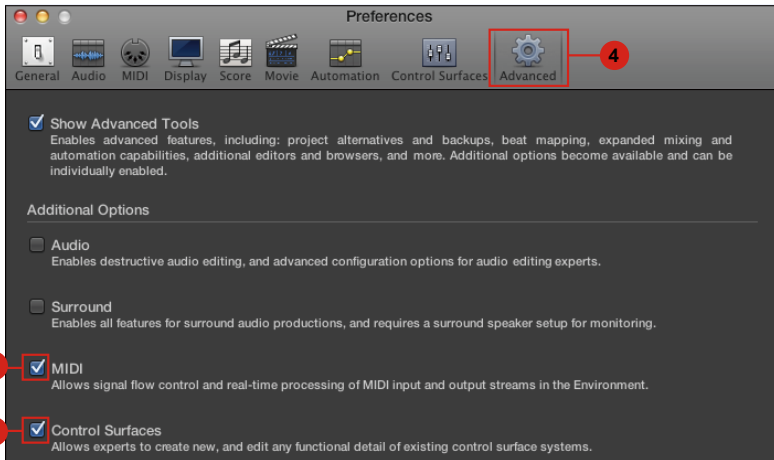
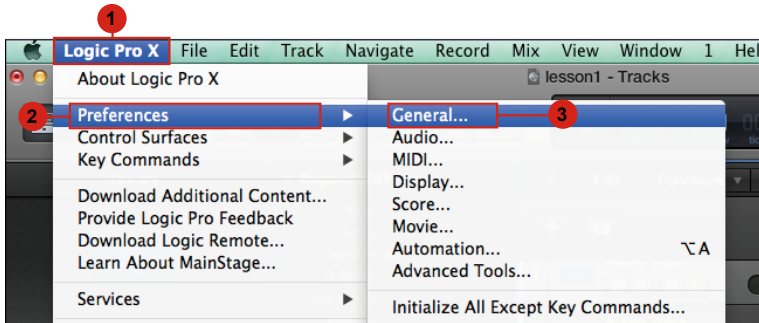
## Cubase



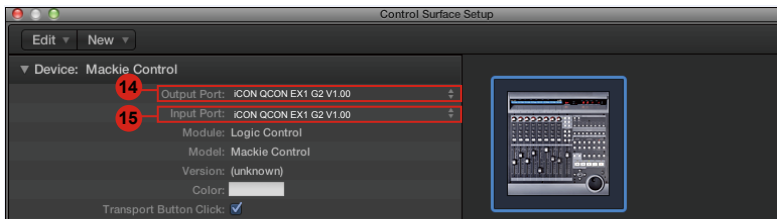
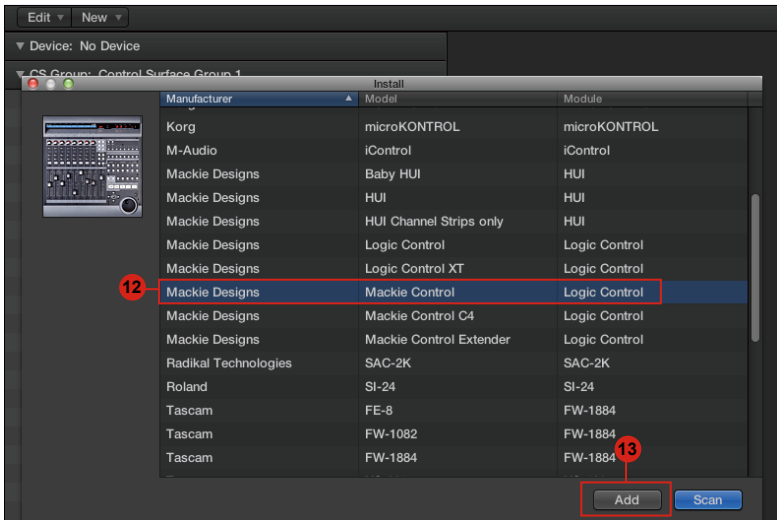
# Nuendo



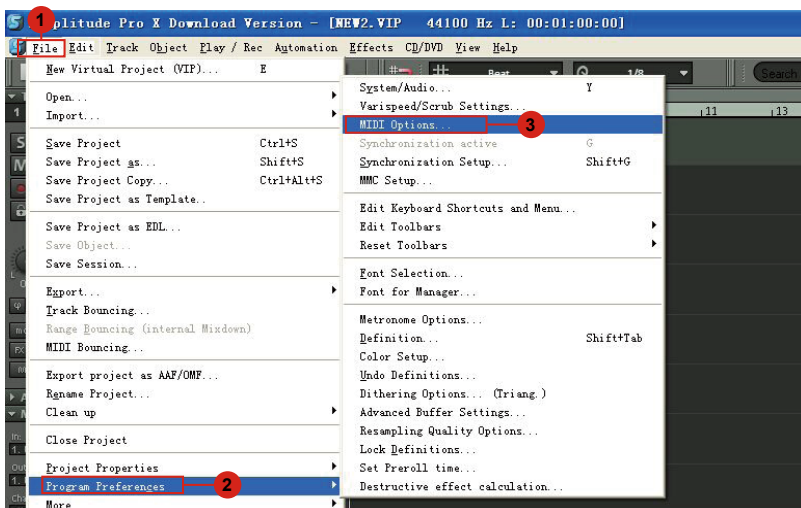
# Logic Pro

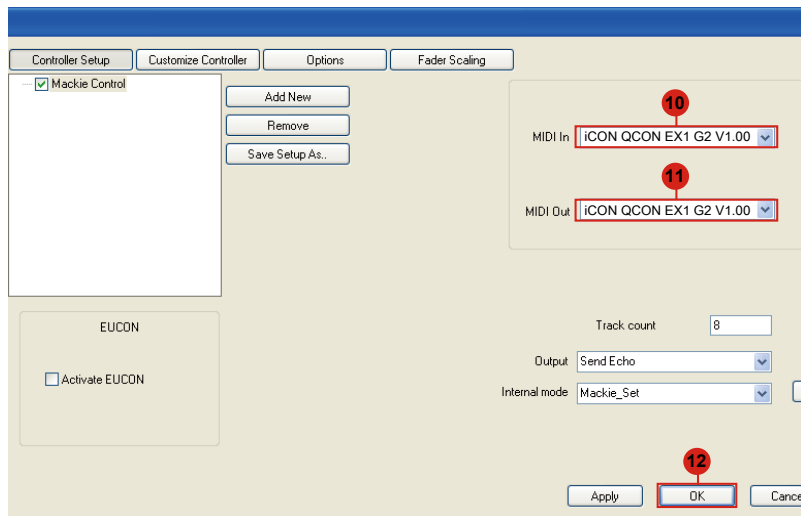
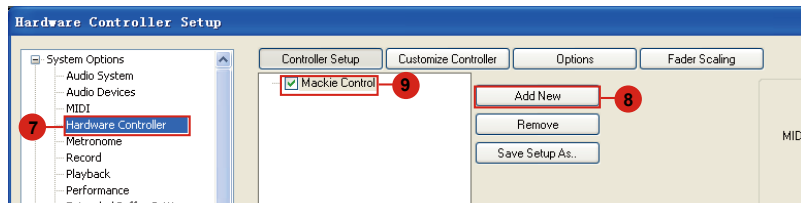
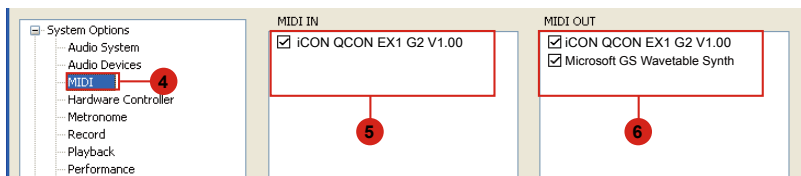


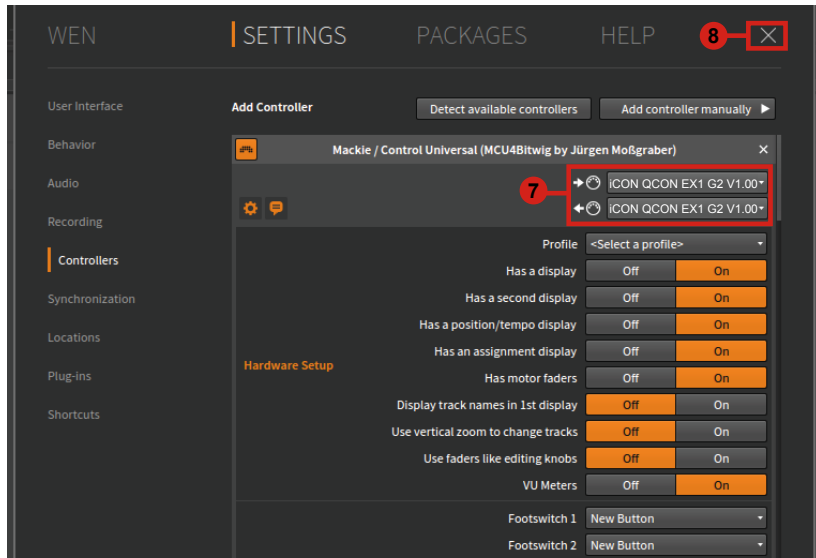
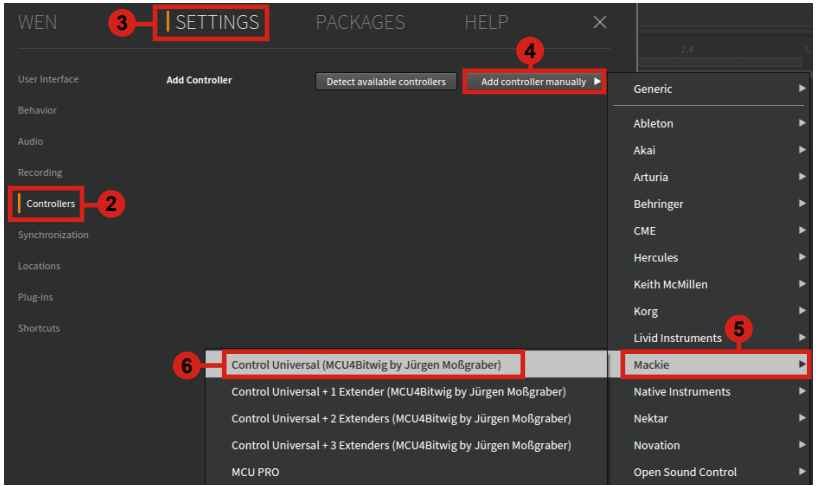
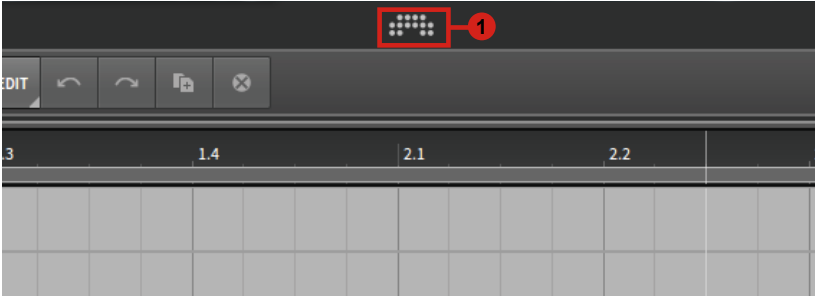




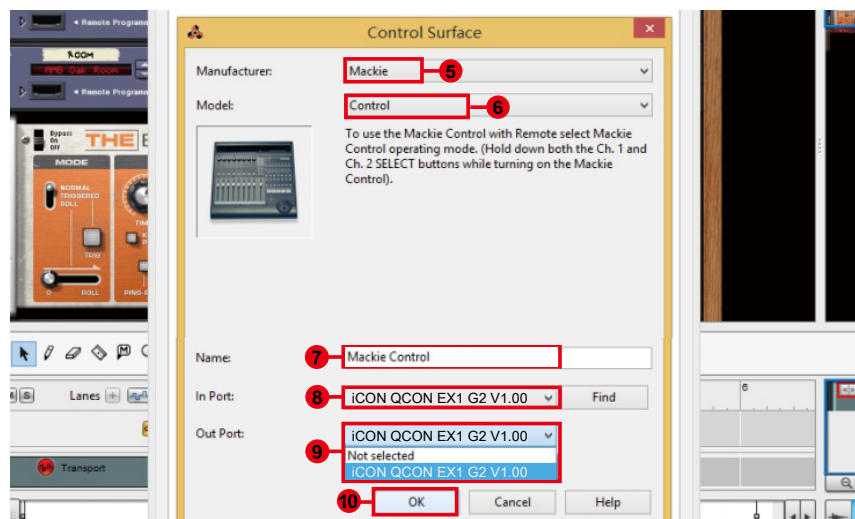
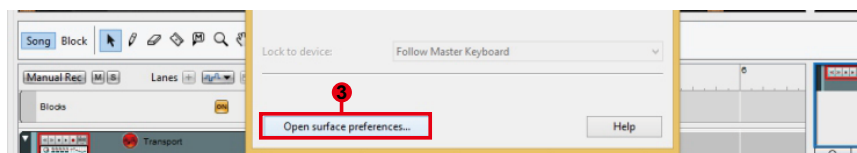
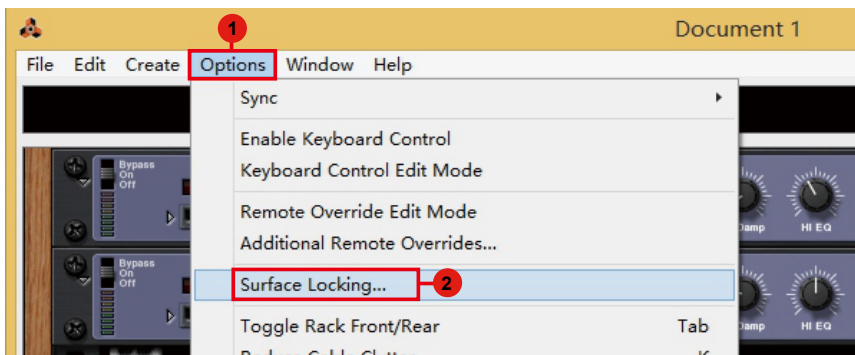
## Samplitude



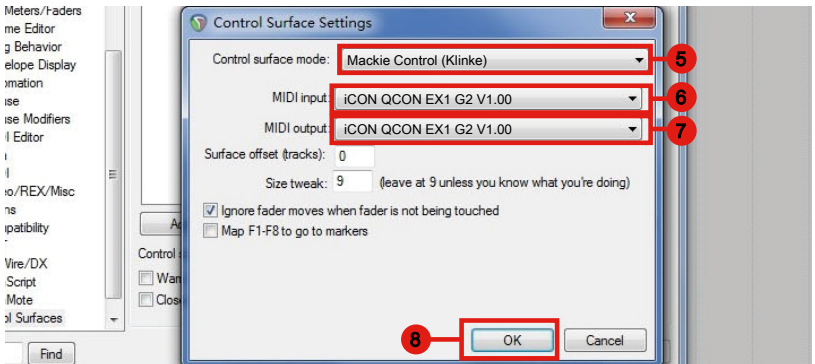
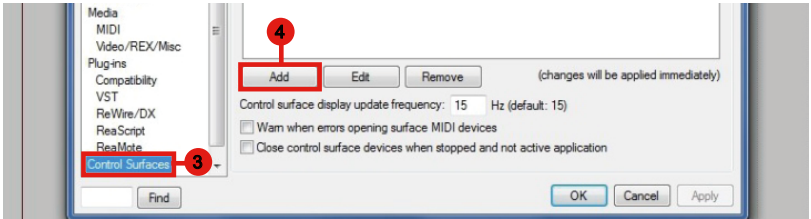
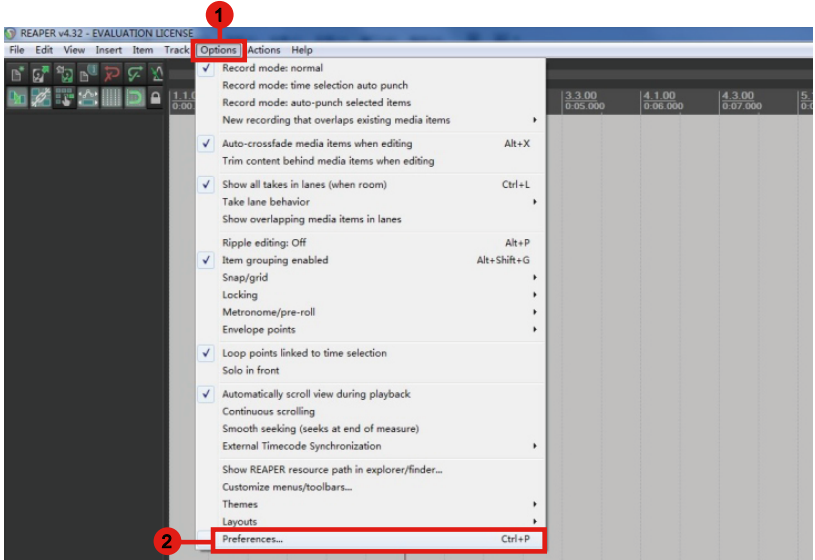




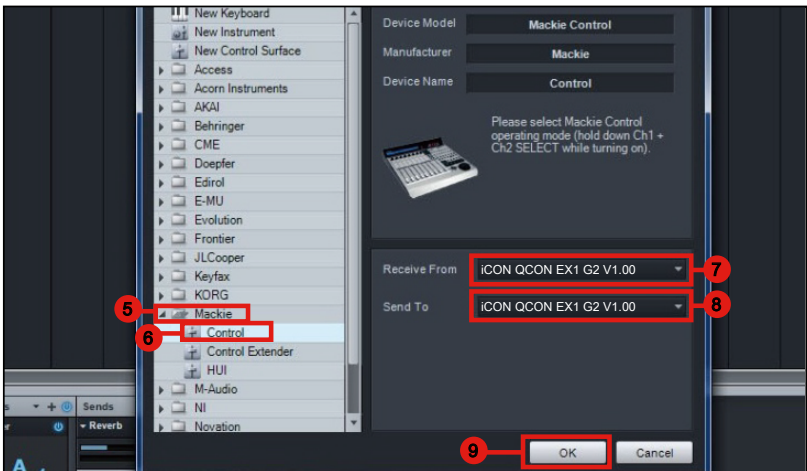
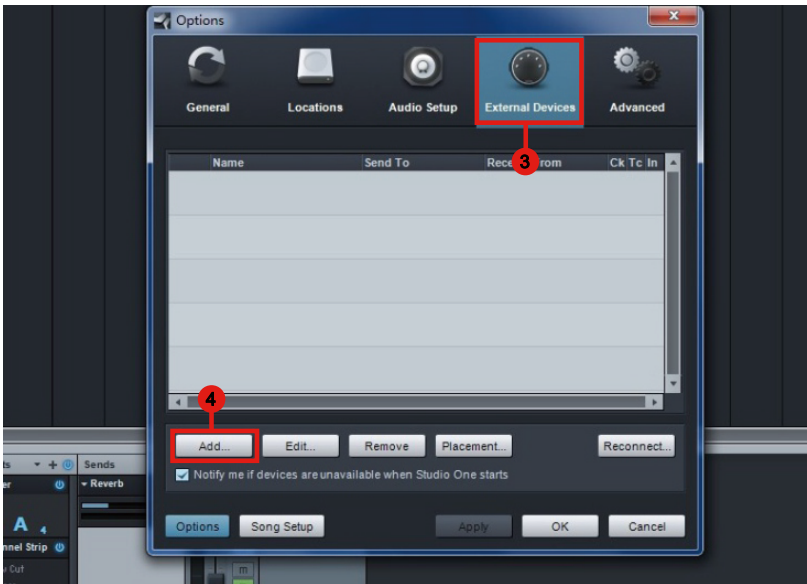
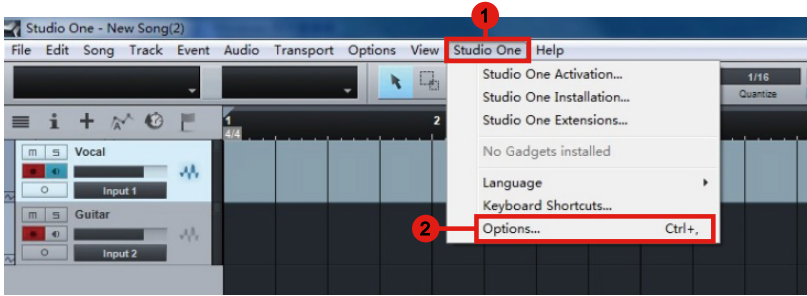
# Reason



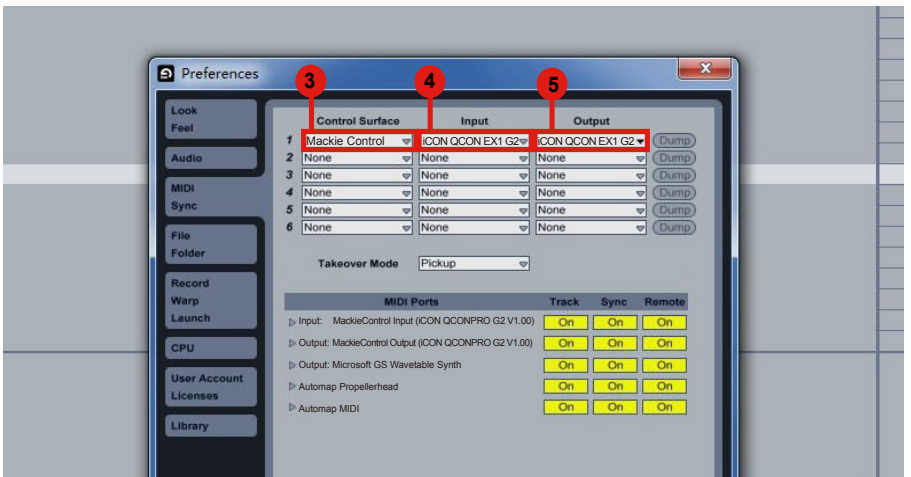
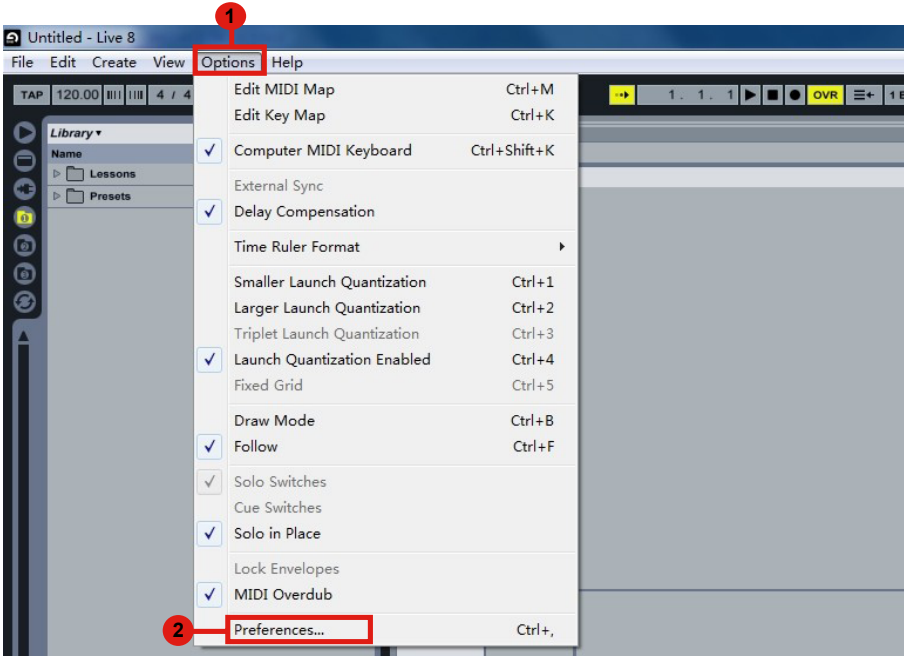
# Reaper



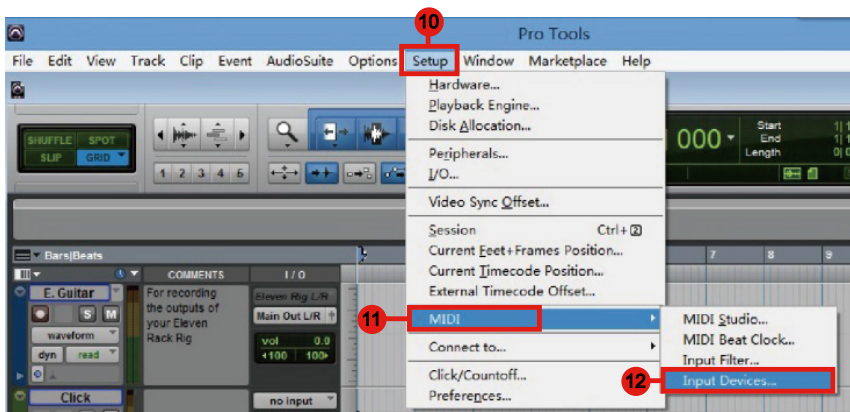
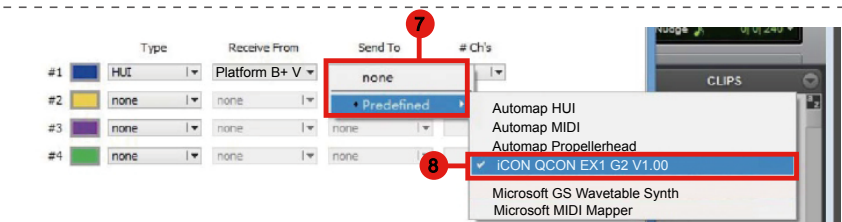
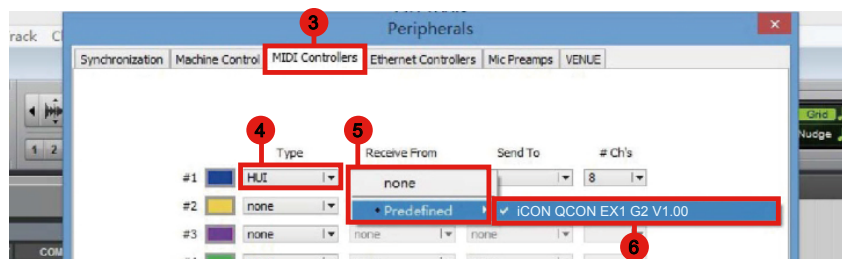
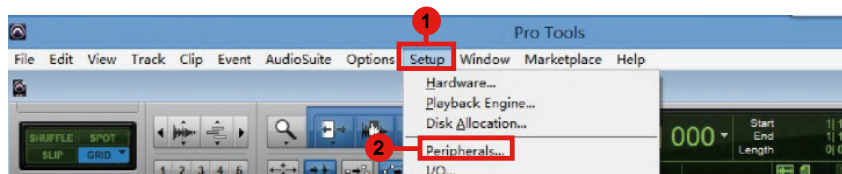
# Studio One



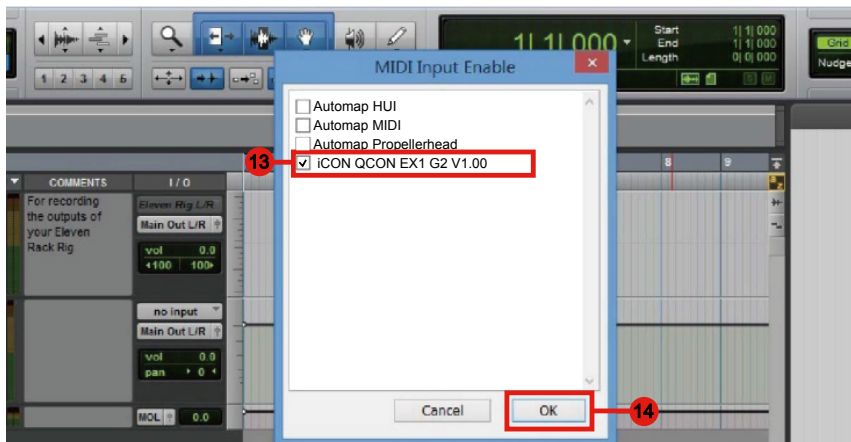
# Ableton Live



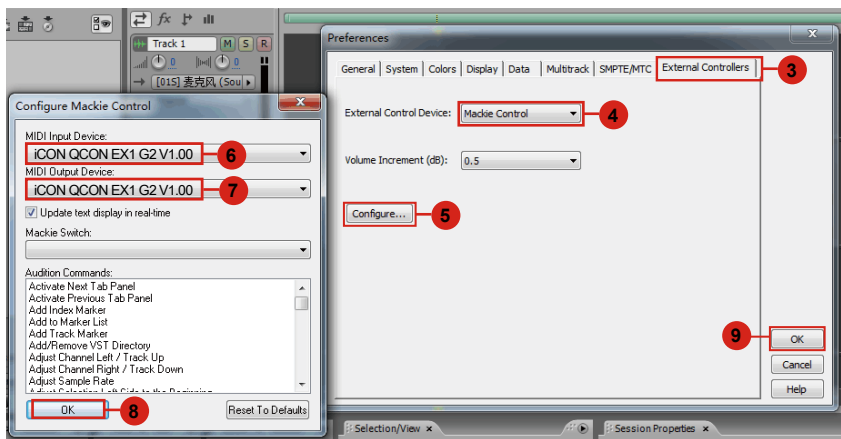
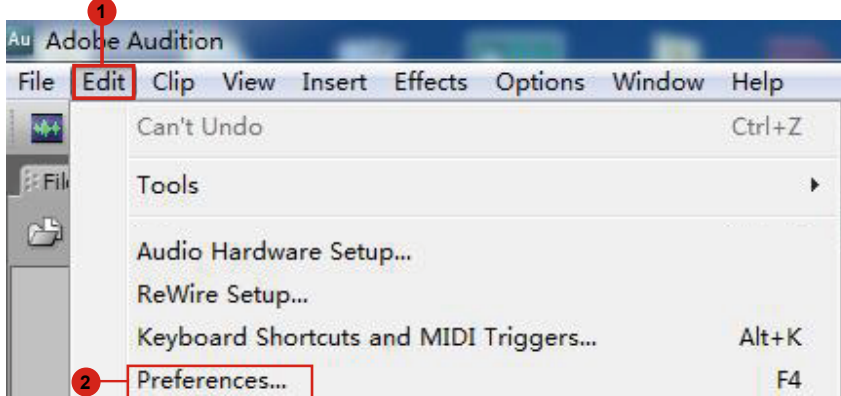
# Pro Tools



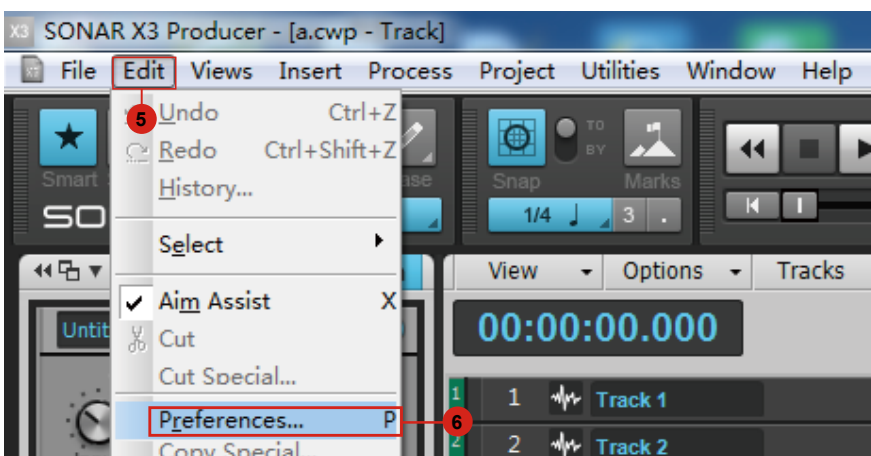
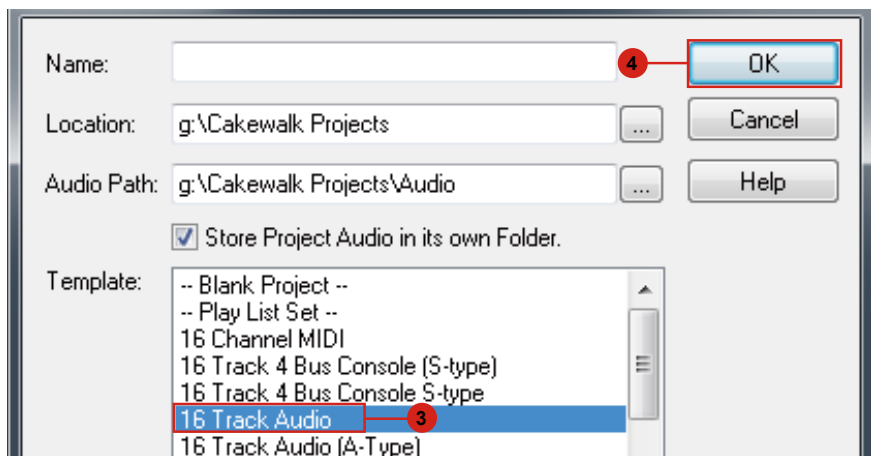
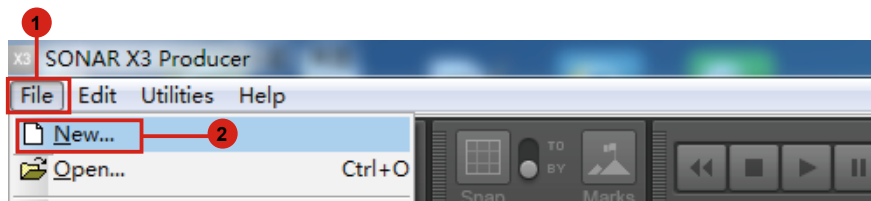


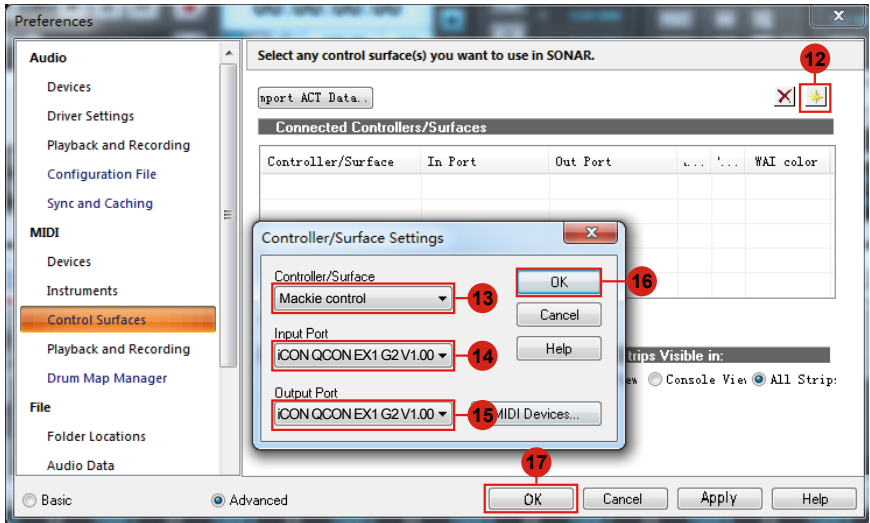
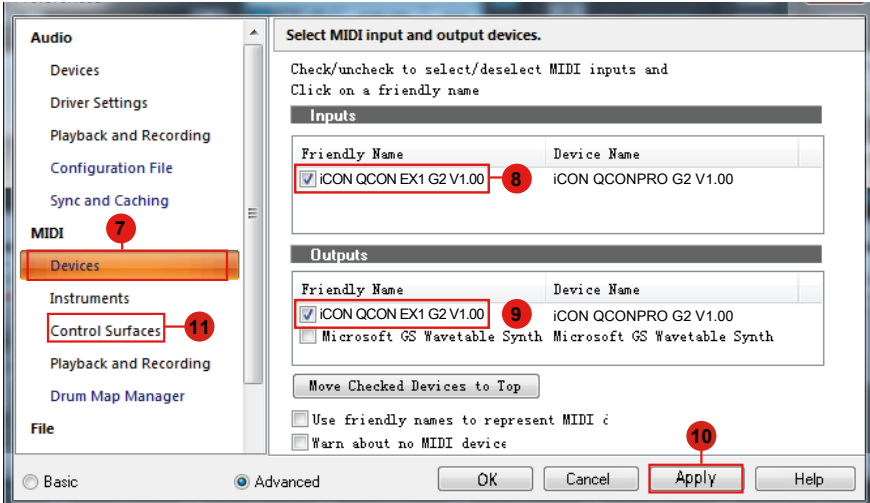


## Audition



## Sonar





# Download the Mac iMap from your Personal User Page at [www.iconproaudio.com](http://www.iconproaudio.com)

After you downloaded the file, please click it to start the installation process.

Qcon Pro G2  
Serial Number: X13JW

Unregister this device

iMap for MacOS [Download The Latest](#)

iMap for Windows [Download The Latest](#)

iMap for MacOS (FOR OLD OVERLAYS ONLY) [Download The Latest](#)

iMap for Windows (FOR OLD OVERLAYS ONLY) [Download The Latest](#)

Quickstart Guide [Download](#)

Diagram 1

## 1. iMap™ Software for Mac OS X

Please follow the procedures below step-by-step to launch your iMap™ software to Mac OS X.

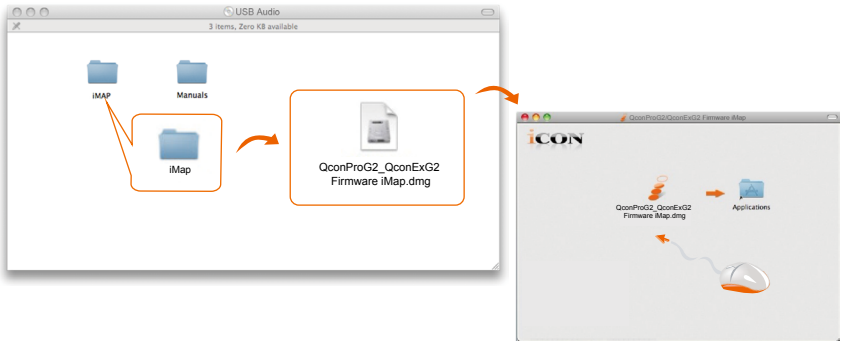


Diagram 2

**Tip:** By “dragging and dropping” the “QconEX G2 iMap” icon into the “Applications” folder, you can create an “iMap” shortcut on your Mac’s desktop.

# Installing iMap™ Software for Windows

Please follow the procedures below step-by-step to install your iMap™ software.

1. Turn on your PC.
2. Download the Windows iMap from your Personal User Page at [www.iconproaudio.com](http://www.iconproaudio.com)

After you downloaded the file, please click it to start the installation

3. Setup Wizard appear

*(Note: Setup wizard appears, please click "Next")*



Diagram 3

4. Choose Install Location

*(Note: Choose your preferred install location for iMap™ or use the default location and click "Next")*

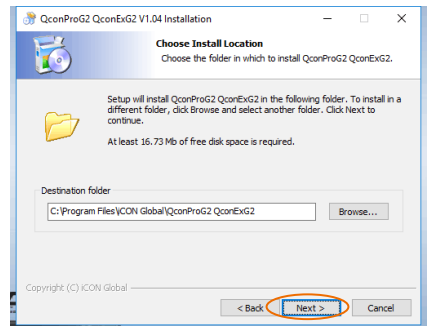


Diagram 4

5. Select shortcut

*(Note: Select the start menu folder in which you would like to create the iMap™ shortcut. Then click "Next".)*

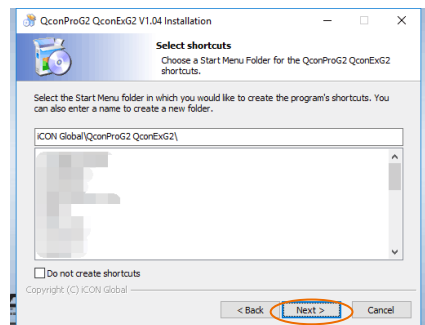


Diagram 5

## 6. Create a shortcut on your desktop

*(Note: Please uncheck the box if you do not want to place a shortcut icon on your desktop for iMap™; otherwise click “Next”)*

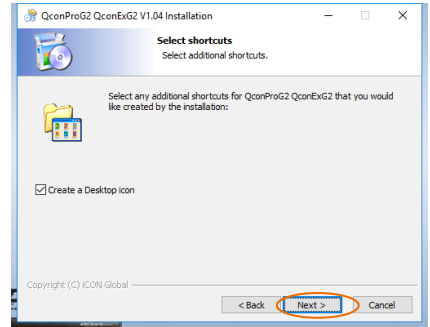


Diagram 6

## 7. iMap™ begins installation

*(Note: The iMap™ installation has now started, wait for it to finish. Then click “Finish”.)*

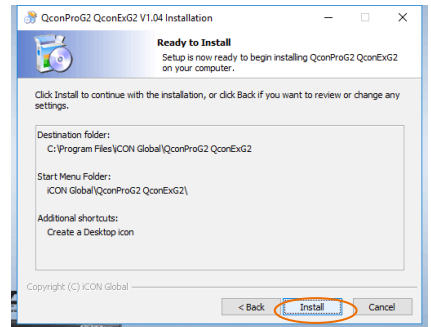


Diagram 7

## 8. Installation finished

*(Note: Click “Finish” to complete the iMap™ software installation.)*



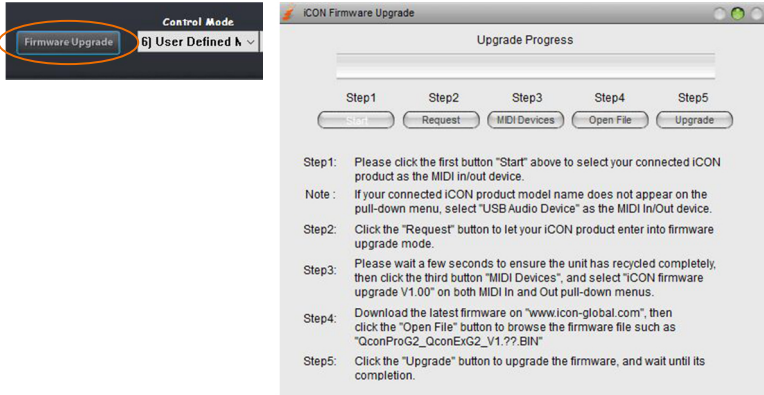
Diagram 8

# iMap™ QconEX G2 software panel

## 1. “Firmware Upgrade” button

Click this button to enter into the firmware upgrade window for QconEX G2. Please refer to P.xx for the firmware upgrade procedure.

## Firmware



**Step 1:** Connect the ICON product using a USB connection. Press the “MIDI Device” button at the top to select your connected ICON product as the “MIDI In and Out” device in the pull-down menu.

(**Note:** If your connected ICON product model name does not appear on the pull-down menu, select “USB Audio” as the MIDI In and Out device.)

**Step 2:** Click the “Update” button.

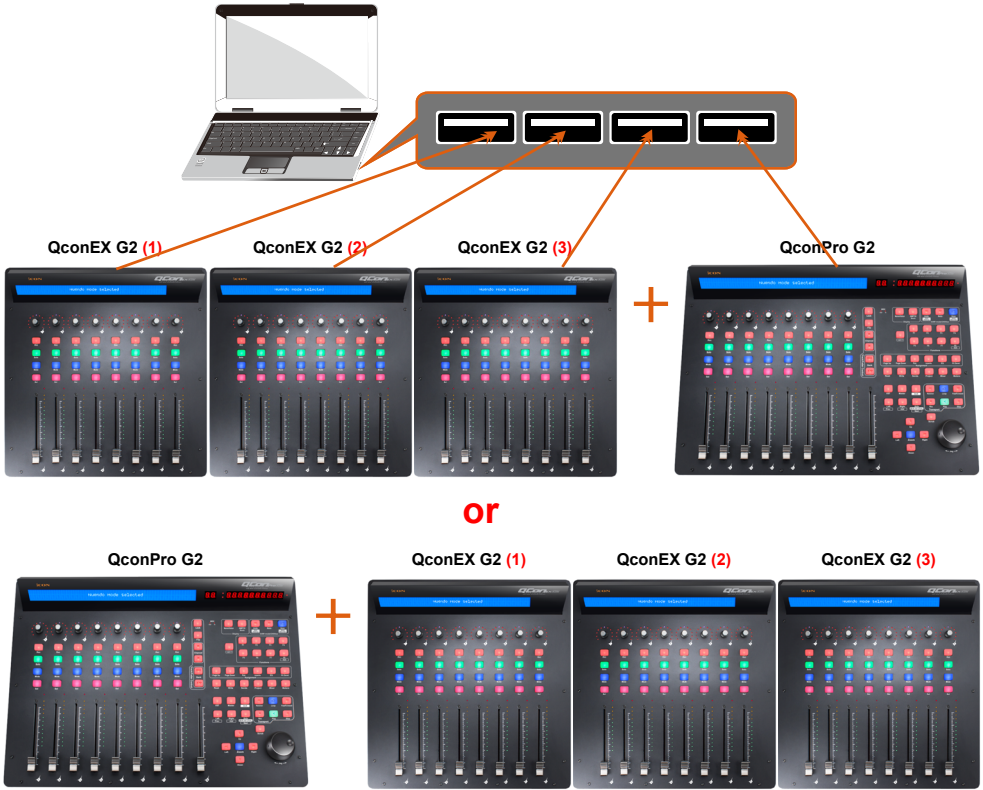
**Step 3:** Press the “MIDI Device” button at the top to select your connected ICON product as the “MIDI In and Out” device at the pull-down menu.

**Step 4:** Click the “Open File” button to browse the new firmware file.

**Step 5:** Click the **Download** button to upload the firmware

(**Warning:** The firmware upload process **MUST** be completed and not be interrupted during the file upload, otherwise the firmware may not be rewritten again.)

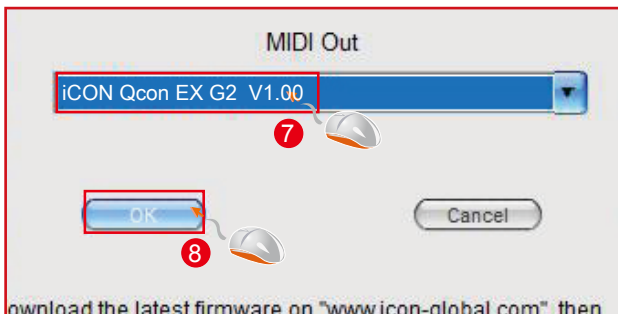
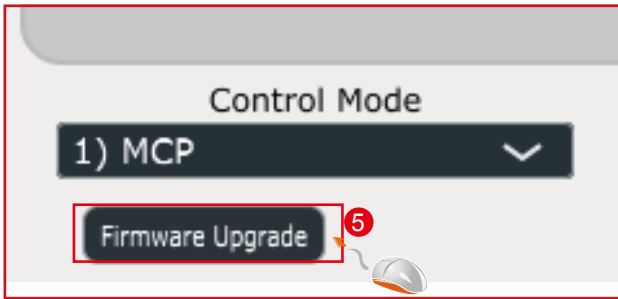
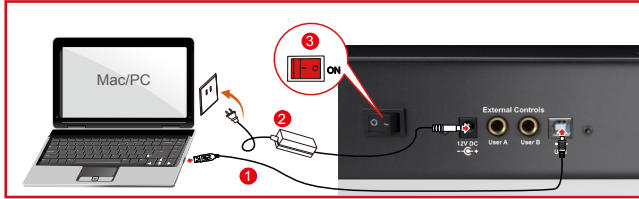
# Connections

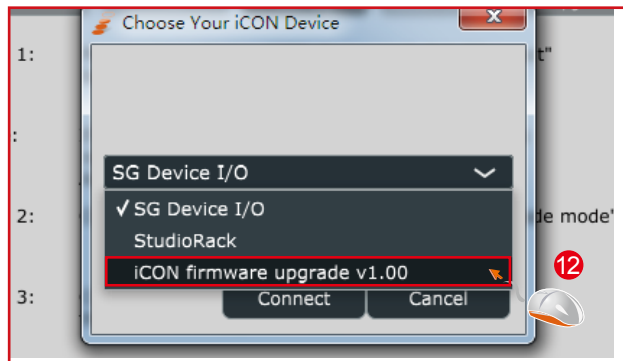
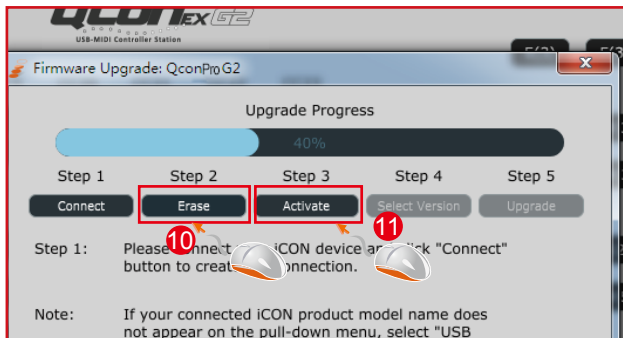
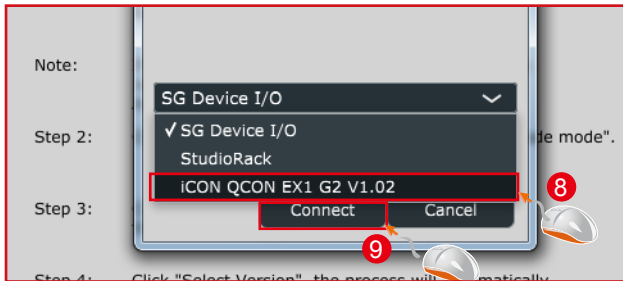


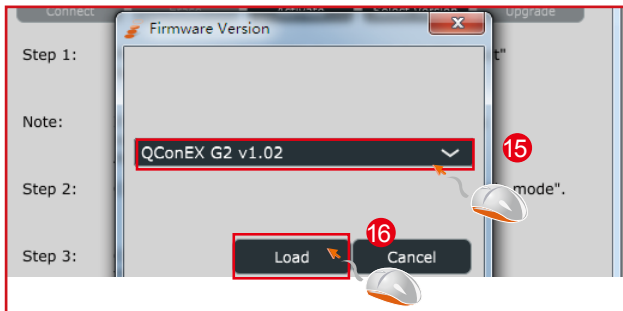
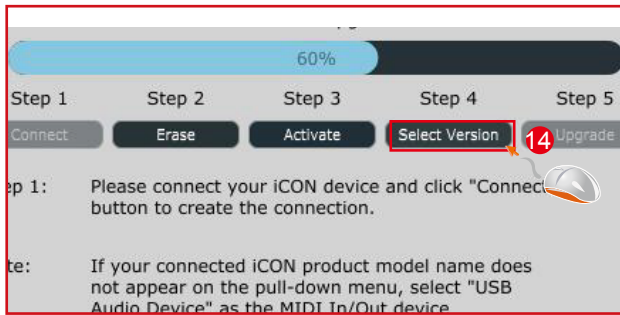


# Firmware upgrade

## QconPro G2 functional firmware upload procedure







## Restore the factory default settings

To restore your QconEXG2 settings to factory default, simply launch iMap and import the original settings (i.e. without making any changes) to the device through the following steps.

1. Connect QconEX G2 with the provided USB cable and launch iMap software.
2. Click the "MIDI Device" button and select "QconEX G2" as the MIDI input and output device.

**Note:** If QconEX G2 does not appear on the pull down menu, select USB audio as the MIDI I/O device.

3. Click "Send Data" to upload the setting to your QconEX G2.
4. Close iMap, and then turn the QconEX G2 power of off & on again.

# Specifications

Connector:	To computer	USB connector (standard type)
	To extender	USB connector (B-Type)
Power supply:		12V/2.5A DC
Current consumption:		2A or less
Weight:		5.015kg (11lb)
Dimensions		457(L) x 203(W) x 456.6(H)mm 17.99"(L) x 7.92"(W) x 17.97"(H)

# Services

If your QconEX G2 needs servicing, follow these instructions.

Check our online help centre at <http://support.iconproaudio.com/hc/en-us>, for information, knowledge, and downloads such as:

1. FAQ
2. Download
3. Learn More
4. Forum

Very often you will find solutions on these pages. If you don't find a solution, create a support ticket at our online Help Center at the link below, and our technical support team will assist you as soon as we can.

Navigate to <http://support.iconproaudio.com/hc/en-us> and then sign in to submit a ticket.

As soon as you have submitted an inquiry ticket, our support team will assist you to resolve the problem with your ICON ProAudio device as soon as possible.

To send defective products for service:

1. Ensure the problem is not related to operation error or external system devices.
2. Keep this owner's manual. We don't need it to repair the unit.
3. Pack the unit in its original packaging including end card and box. This is very important. If you have lost the packaging, please make sure you have packed the unit properly. ICON is not responsible for any damage that occurs due to non-factory packing.
4. Ship to the ICON tech support center or the local return authorization. See our service centers and distributor service points at the link below:

If you are located in US

Send the product to:

**North America**

**Mixware, LLC – U.S. Distributor  
11070 Fleetwood Street – Unit F.**

**Sun Valley, CA 91352; USA**

**Tel.: (818) 578 4030**

**Contact: [www.mixware.net/help](http://www.mixware.net/help)**

If you are located in Hong Kong

Send the product to:

**ASIA OFFICE:**

**Unit F, 15/F., Fu Cheung Centre,  
No. 5-7 Wong Chuk Yueng Street,**

**Fotan,**

**Sha Tin, N.T., Hong Kong.**

If you are located in Europe

Send the product to:

**Sound Service**

**GmbH European**

**Headquarter Moriz-Seeler-Straße**

**3D-12489 Berlin**

**Telephone: +49 (0)30 707 130-0**

**Fax: +49 (0)30 707 130-189**

**E-Mail: [info@sound-service.eu](mailto:info@sound-service.eu)**

5. For additional update information please visit our website at:

**[www.iconproaudio.com](http://www.iconproaudio.com)**



**i**CON  
PRO AUDIO



天猫官方旗舰店



天猫店iconproaudio旗舰店

抖音号



抖音iCON艾肯

哔哩哔哩



B站iCONProAudio

微信公众号



微信号iCON-PRO

官方售后QQ



4006311312.114.qq.com

中国地区用户

Twitter



[www.twitter.com/iconproaudio](http://www.twitter.com/iconproaudio)

Instagram



[www.instagram.com/iconproaudio](http://www.instagram.com/iconproaudio)

Facebook



[www.facebook.com/iconproaudio](http://www.facebook.com/iconproaudio)

Youtube



[www.youtube.com/iconproaudio](http://www.youtube.com/iconproaudio)

Website



[www.iconproaudio.com](http://www.iconproaudio.com)

Support



[support.iconproaudio.com](http://support.iconproaudio.com)

Dashboard



[iconproaudio.com/dashboard/](http://iconproaudio.com/dashboard/)

[www.iconproaudio.com](http://www.iconproaudio.com)