



QCon Pro G2

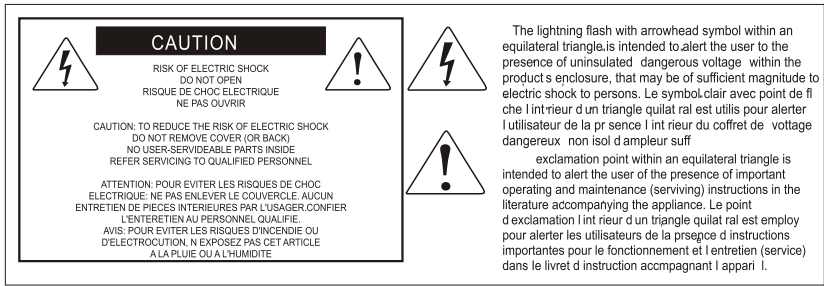
USB-MIDI Controller Station

MIDI/Audio control surface with motorized faders
for production



User manual





Important Safety Instructions

1. Read this manual thoroughly before using this unit.
2. Keep this manual for future reference.
3. Take notice of and comply with all warnings included in the user's manual or indicated on the appliance.
4. Follow all instructions included in this manual.
5. Do not expose this unit to rain or moisture. Avoid having water or other liquids spilled on this unit.
6. When cleaning the cabinet or other parts of this appliance, use only a dry or slightly damp soft cloth.
7. Do not block any ventilation openings or interfere with the proper ventilation of this unit. Install in accordance with the manufacturer's instructions.
8. Do not use or store near any heat sources such as radiators, heat registers, stoves, or other heat-producing appliances.
9. Do not interfere with the safety purpose of the polarized or grounding-type plug. A polarized plug has two blades with one wider than the other. A grounding-type plug has two blades and a third grounding prong. These are designated for your safety. If the provided plug does not fit into your outlet, consult an electrician.
10. Protect the power cord from being walked on or otherwise damaged by items placed on or against them. Particular attention should be given to the plugs, receptacles, and the point where the cord exits the appliance.
11. To avoid the risk of electrical shock, do not touch any exposed wiring while the unit is in operation.
12. Only use attachments/accessories specified by the manufacturer.
13. Unplug this unit and all connected electrical equipment during lightning storms or when left unused a long period of time.
14. Refer all servicing to qualified service personnel. Servicing is required when the appliance has been damaged in any way or fails to operate normally.

WARNING: To reduce the risk of fire or electric shock, do not expose this unit to rain or moisture

Contents

Introduction.....	4
What's in the package?	4
Register your ICON ProAudio product to your personal account	5
Features	6
Top Panel Layout.....	7
Rear Panel Layout.....	12
Bottom Panel Layout.....	13
Getting Started (Connected with QconEX G2 (1 - 3units)).....	14
Connecting Your QconPro G2 Controller.....	14
Cubase	17
Bitwig	19
Logic Pro	20
Pro Tools.....	22
Studio One.....	24
Getting Started (Standalone device)	27
Connecting Your QconPro G2 Controller	27
Cubase	28
Nuendo.....	30
Logic Pro	31
Samplitude.....	32
Bitwig.....	34
Reason	35
Reaper.....	36
Studio One.....	37
Ableton Live.....	38
Pro Tools.....	39
Audition.....	40
Sonar	41
Digital Performer.....	43
FL-Studio	44
Download the Mac iMap from your Personal.....	45
User Page at www.iconproaudio.com	45
Installing iMap™ Software for Windows	46
Firmware upgrade	48
Restore the factory default settings.....	51
Specifications	52
Services.....	53

Introduction

Thank you for purchasing the ICON ProAudio QconPro G2 Midi/Audio control surface. We sincerely trust this product will provide years of satisfactory service, but if anything is not to your complete satisfaction, we will endeavor to make things right.

In these pages, you'll find a detailed description of the features of the QconPro G2, as well as a guided tour through its front and rear panels, step-by-step instructions for their setup and use, and full specifications.

Please register the product on our website at the below link **[www. iconproaudio.com/registration](http://www.iconproaudio.com/registration)**:

Please follow the step by step procedures starting from input the device's serial number to your personal information etc. By registering your product online, you will entitle to several different services and after-sales supporting at our ACS help center by visting our website at **www.iconproaudio.com**. Also, all the registered products under your account will be listed on your personal product page where you could get update information such as firmware/driver upgrade, software bundle and user manual download etc for your device.

As with most electronic devices, we strongly recommend you retain the original packaging. In the unlikely event the product must be returned for servicing, the original packaging (or reasonable equivalent) is required.

With proper care and adequate air circulation, your QconPro G2 will operate without any trouble for many years. We recommend that you record your serial number in the space provided below for future reference.

What's in the package?

- QconPro G2 USB-MIDI Controller x 1pc
- Quick Start Guide x 1
- Screwdriver x 1
- USB2.0 Cable x 1
- AC adaptor x 1pc

Register your ICON ProAudio product to your personal account

1. Check serial number of your device

Please go to [http:// iconproaudio.com/registration](http://iconproaudio.com/registration) or scan the QR code below.



Input your device's serial number and the other information on the screen. Click "Submit".

A message will pop up showing your device information such as model name and its serial number - Click "Register this device to my account" or if you see any other message, please contact our after-sales service team

2. Log in to your personal account page for existing user or sign up for new user

Existing user: Please log into your personal user page by inputing your user name and password.

New user: Please click "Sign Up" and fill in all the information.

3. Download all useful materials

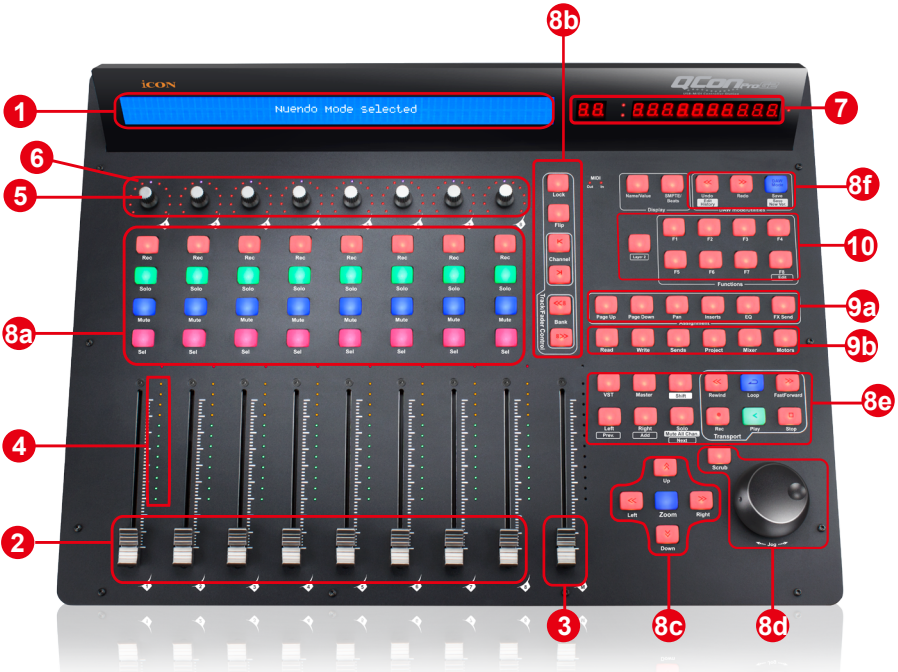
All your registered devices under your account will show on the page. Each product will be listed along with all its available files such as drivers, firmware, user manual in different languages and bundled software etc. for download. Please make sure you have download the necessary files such as driver before you begin device installation.

Features



- 8 touch-sensitive motorized channel faders
- 12-segment LED level metering for channels
- 1 touch-sensitive motorized fader for master channel
- 8 x dual function encoder knobs (Enter & rotate)
- 11-segment LED surrounding the encoders to indicate the rotating position
- Large backlit LCD to display channel name, control values etc. for each channel
- 10-segment LED display showing time location of your project in either SMPTE or Midi beat clock (bars:beats:ticks) format
- 81 assignable buttons for user define mode
- Jog wheel shuttle for fast search and control
- Illuminated buttons for each channel including Rec-enable, Solo, Mute, Select and Monitor
- 6 illuminated transport buttons including Play, Stop, Rec, Rewind, Fast forward and Loop
- Illuminated zoom key with 4 direction keys
- MackieControl and HUI Universal emulation
- iMap - Self midi mapping software is provided for user-defined mode (MIDI Learn)
- Expandable to 32-channel control surface with 3units of QconEX G2
- User A & User B 1/4" TRS connectors for connecting with pedals
- Class-compliant with Windows XP, Vista (32-bit), Windows 7/8/10 (32-bit & 64-bit), and Mac OS X (IntelMac)
- USB 2.0 high speed connectivity
- Firmware upgrade available simply via USB connection and iMap software
- Different DAW overlay are included - Cubase/Nuendo, LogicPro, Digital Performer, FL Studio, Samplitude, Reaper, Studio One, Bitwig, Reasons, ProTools, Sonar, Audition, Ableton Live and User define
- Robust aluminum and metal casing with Kensington lock port

Top Panel Layout



Note: Functions operate slightly differently between DAWs. Please refer to your DAW manual for each function and overlap the provided labeling template according to your currently used DAW. The following description is based on the functions that operate in Apple Cubase.

1. LCD backlit display

The two-line backlit LCD display shows the parameter values as you adjust them and also provides feedback about channel selections, operating modes, and more.

2. Channel faders

The eight 100mm motorized faders are generally used for controlling the track volume of your DAW. Depending on your DAW, you may use the “Flip” button to switch the function of these faders to change other settings. They are all touch sensitive to allow override automation the moment you touch a fader. Also, they are motorized; they will automatically move to reflect the current level of the selected channels in your DAW application. Any automation recorded in a project will be reflected by the fader positions. Any parameter adjustments made with these faders will be displayed directly above on the LCD display.

3. Master fader

This 100mm motorized fader operates the same as the other 8 faders. It controls your DAW software's master channel fader. Any parameter adjustments made with this fader will be displayed directly above on the LCD display.

4. Channel level metering

The 12-led meter shows the associated channel level.

5. Dual function encoders

The dual function encoders act as push-button and rotary controls. When an encoder is pressed, it may be used to change modes of operation or to change what appears in the display above the channel strips. When an encoder is rotated, depending on its assigned function, it can be used to adjust a channel's pan, send level, or plug-in parameters.

6. Encoder LED

The 11-LED's surrounding the encoder light up to indicate the relative position of the rotation without having to look at your computer.

7. Time display

This display shows the time location of your project in either SMPTE or Midi beat clock format.

8. Control buttons

8a) Recording channel control buttons section

REC buttons - Activate and deactivate the recording state of the associated channel. The switch will light red when the channel is armed.

SOLO buttons - Activate and deactivate the solo state of the associated channel. The switch will light green when the channel solo state is on and other channels will be muted. You can solo multiple channels by pressing SOLO buttons on additional channels.

MUTE buttons - Activate and deactivate the mute state of the associated channel. The switch will light blue when the channel is muted.

SEL buttons - The SEL buttons activate the associated channels in the DAW software in order to perform a specific operation (for example, when adjusting EQ with the ASSIGNABLE ENCODERS, the SEL switch will be used to choose the channel you want to adjust). The switch will light red when the channel is selected.

8b) Motorized fader control buttons section

LOCK button - Activate to lock all motorized faders.

FLIP button - Press the FLIP button to swap the parameter settings of the motorized faders and the rotary encoder knobs.

UP button -	Shift “one” channel up for all faders (except the master channel).
DOWN button -	Shift “one” channel down for all faders (except the master channel).
BANK UP button -	Shift “eight” channels up for all faders (except the master channel).
BANK DOWN button -	Shift “eight” channels down for all faders (except the master channel).

8c) Zoom control buttons section

ZOOM button - The ZOOM button is typically used in conjunction with the ARROW buttons described below to zoom in and out within windows in the DAW application.

UP button - The UP button is used to navigate (up movement) through the Graphical User Interface (GUI) of the DAW application.

DOWN button - The DOWN button is used to navigate (down movement) through the Graphical User Interface (GUI) of the DAW application.

LEFT button - The LEFT button is used to navigate (left movement) through the Graphical User Interface (GUI) of the DAW application.

RIGHT button - The RIGHT button is used to navigate (right movement) through the Graphical User Interface (GUI) of the DAW application.

8d) Jog wheel section

Jog wheel - The jog wheel is used for various purposes specific to the DAW application, including shuttle and scrubbing functions.

Scrub button - The SCRUB button is typically used in conjunction with the jog wheel to scrub selected audio tracks for editing and auditioning purposes.

8e) Transport control buttons section

PLAY button - Activate the play function of the DAW.

STOP button - Activate the stop function of the DAW.

REC button - Activate the record function of the DAW.

REWIND button - Activate the rewind function of the DAW.

FAST FORWARD button - Activate the fast forward function of the DAW.

LOOP button - Activate the loop function of the DAW.

Marker button - Toggle small Marker mode.

Nudge - Toggle small Nudge mode.

Click - Toggle playback or record metronome click.

Drop - Toggle Drop.

Replace - Toggle Replace.

Solo - Toggle track solo (of selected track).

8f) DAW Selector section

QconPro G2 has built-in Mackie Control, LogicPro protocols & HUI for different DAW's such as Cubase™, Samplitude™, Ableton Live™, Logic Pro™ and ProTools™. By selecting the correct DAW and Mackie control (HUI/LogicPro) protocol, QconPro G2 will automatically map the major functions and work seamlessly with that DAW.

<< / >> buttons - These arrow buttons are used to scroll through the mode list. The name of the mode will display on the LCD.

DAW button - Press to enter the mode selection.

To change your QconPro G2 Control mode, turn the power switch off and on to enter the Control selection mode. Select your desired mode from the list with the “<<” / “>>” buttons.

Tips: *The DAW button cannot be activated if DAW software is running.*

Tips: *QconPro G2 will memorize your last selected mode and re-enter the same mode a few seconds after it has been switched on. (i.e. mode selection is not needed if the last mode is being used.)*

9. Sub-control buttons

This section of control buttons varies in different DAWs. QconPro G2 is based on Cobase™ for the settings.

(Note: *For different DAWs the labeling may not be perfectly matched.)*

9a) Assignment section

TRACK button - Activate the track parameters of the software.

PAN/EQ/Send/Plug- in/Instrument buttons - These buttons are used to activate the corresponding effect function of the DAW. They are typically used in conjunction with the rotary encoder knobs. The button illuminates when pressed. Then rotate the rotary encoder knob to adjust the value, which will display on the LCD directly above.

9b) Automation section

GROUP - Press to enter "Group" edit mode.

READ/Off button - Press the READ button to activate the read function of the current audio track.

WRITE button - Press the WRITE button to activate the write function of the current audio track.

TOUCH button - Press to set selected track's automation to Touch.

LATCH - Press to set selected track's automation to Latch.

TRIM - Currently unassigned.

10. User-defined control buttons

This section of control buttons is user-defined in Mackie control mode. You may set their parameters according to your personal needs. PVC labeling mask is included for noting the set parameters.

Rear Panel Layout



1. User A / User B 1/4" TRS connectors

These 1/4" TRS connectors are able to connect to foot pedals (SPD-01) to activate your selected functions. To set their parameters, select USER A and USER B parameters in Mackie control mode.

2. USB port

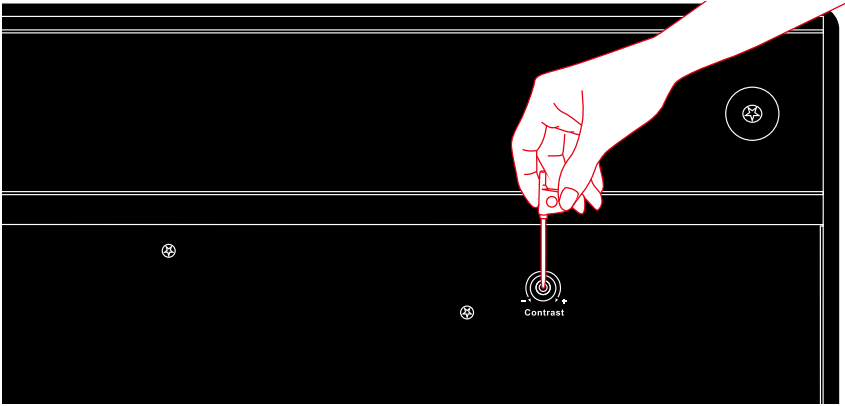
Connect your QconPro G2 to your Mac/PC via this USB port.

3. 12V/2.5A power adapter

Connect the provided power adapter here.

(Note: QconPro G2 is not able to work without the provided power adapter connected. The USB bus power is not able to provide sufficient power supply for QconPro G2.)

Bottom Panel Layout



1. LCD contrast adjustment

Rotate the adjustment knob with the provided screwdriver to adjust the contrast of the LCD. Rotate anticlockwise to reduce the contrast and clockwise will increase.

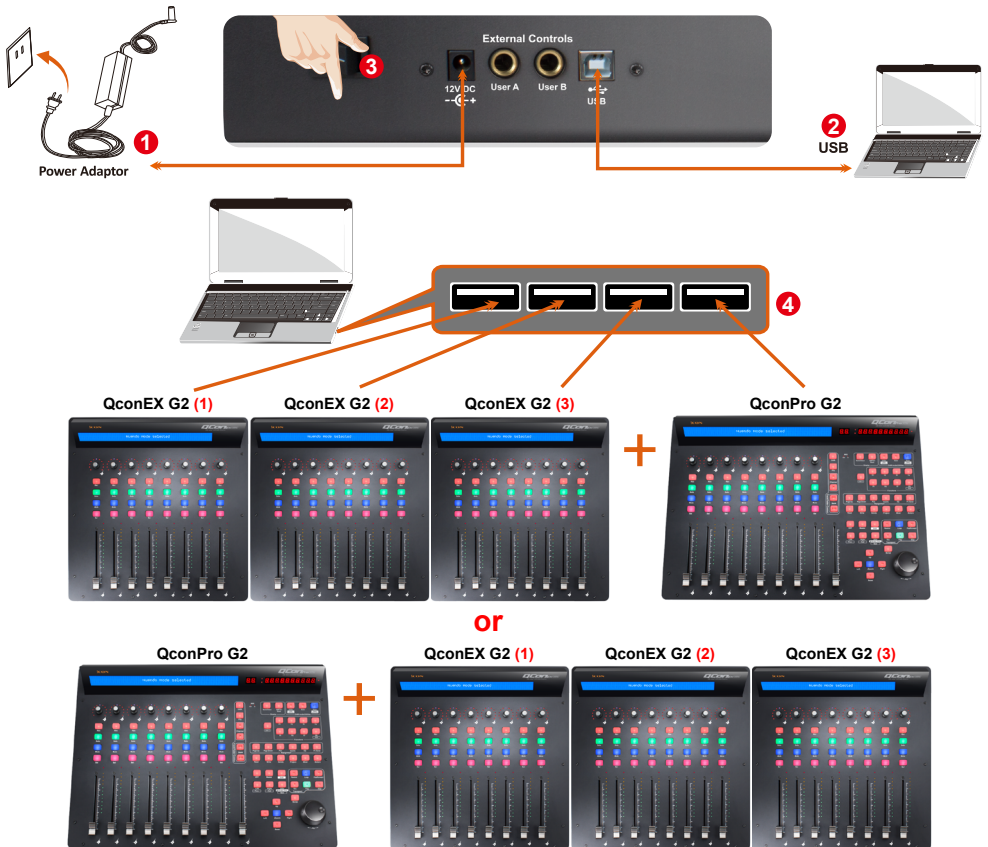
Getting Started (Connected with QconEX G2 (1 - 3 units))

Connecting Your QconPro G2 Controller

1. Connect the QconPro G2 to your Mac/PC via the USB port

Choose a USB port on your Mac/PC and insert the wide (flat) end of the USB cable. Connect the cable's other end to the QconPro G2. Your Mac/PC should automatically "detect" the new hardware and notify you that it is ready to use.

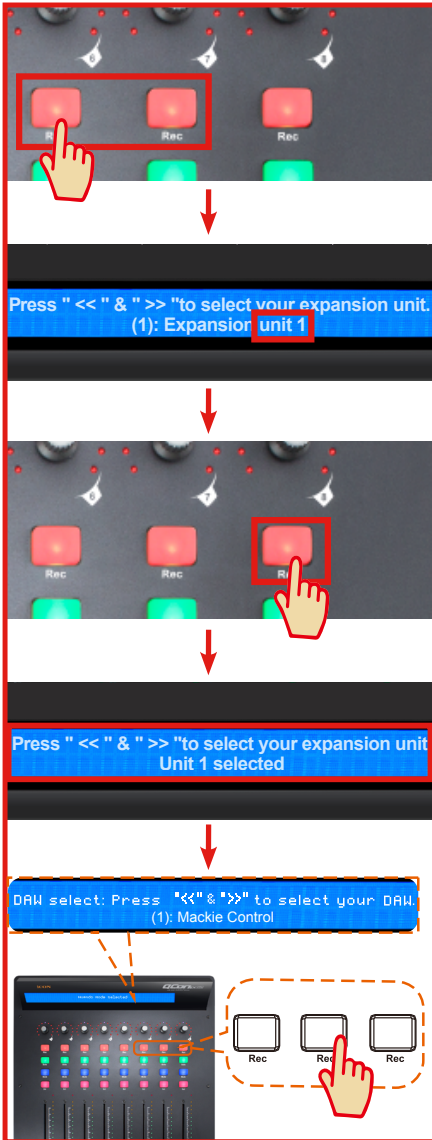
(Tips: We recommended that you use ICON's OneHub USB hub, which allows you to connect up to 3 units of QconEX G2, if you are not connecting QconEX G2 directly to your computer's USB port.)



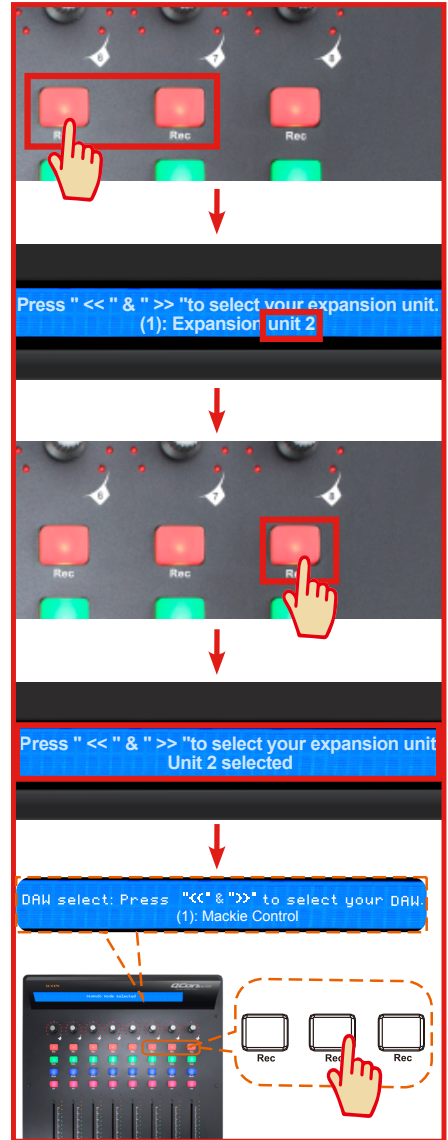
2. Select the DAW.

Press <</>> to scroll through the mode list after pressed the "DAW" button to make the selection.

1 QconEX G2 (1)



2 QconEX G2 (2)



3 QconEX G2 (3)

Press "<<" & ">>" to select your expansion unit.
(1): Expansion unit 3

Press "<<" & ">>" to select your expansion unit.
Unit 3 selected

DAW select: Press "<<<" & ">>>" to select your DAW.
(1): Mackie Control

4 QconPro G2

DAW select: Press "<<<" & ">>>" to select your DAW.
(1): Mackie Control

3. Setup your DAW

The QconPro G2 has built-in Mackie Control, LogicPro and HUI protocol which will save you considerable trouble in setting up the device at your DAW. Simply add the “Mackie Control” or “HUI” device under the “MIDI Controller” on your software. After the Mackie Control or HUI device has been added, select QconPro G2 controller as your MIDI input and output device in your DAW.

For the software below, please use Mackie Control
Nuendo/Cubase™, Logic Pro™, Samplitude™, Bitwig™, Reason™, Reaper™, Studio One™ and Ableton Live™.

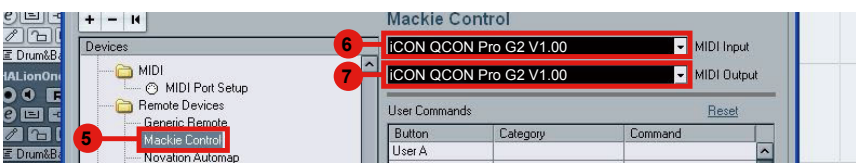
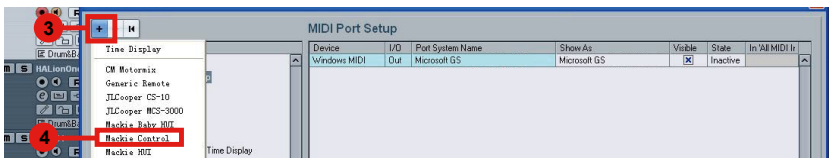
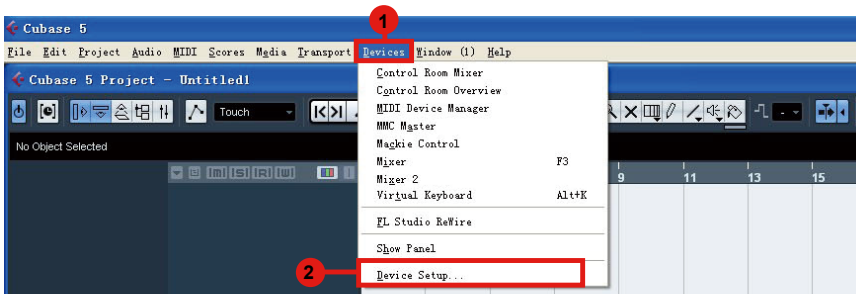
The software below, please use Logic Pro Mackie Control Logic Pro.

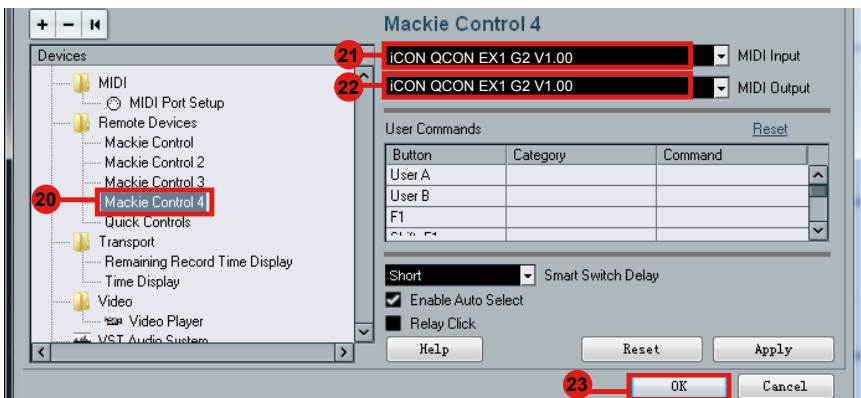
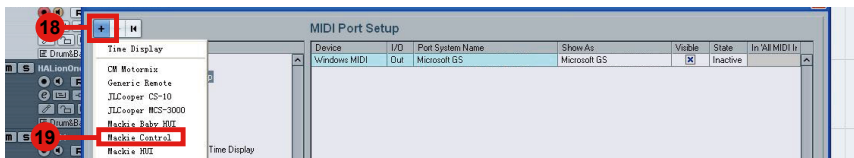
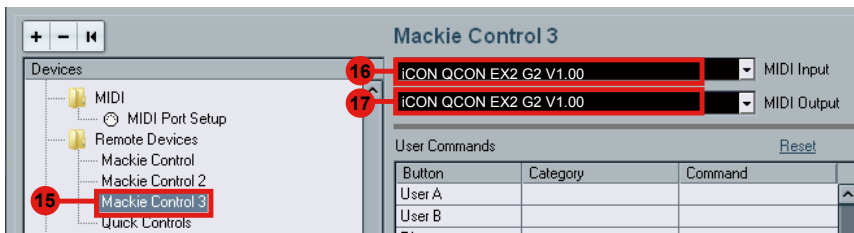
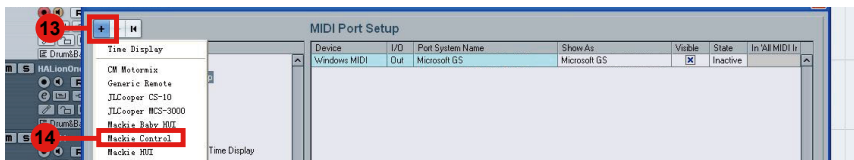
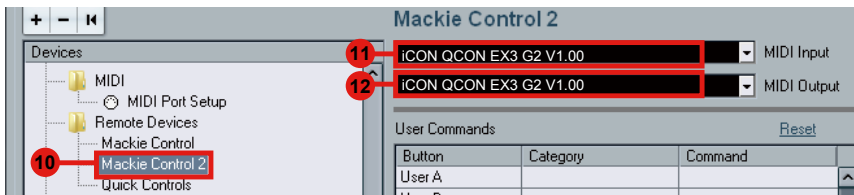
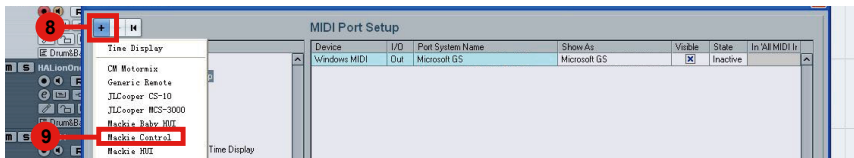
or the software below, please use HUI
Pro Tools™.

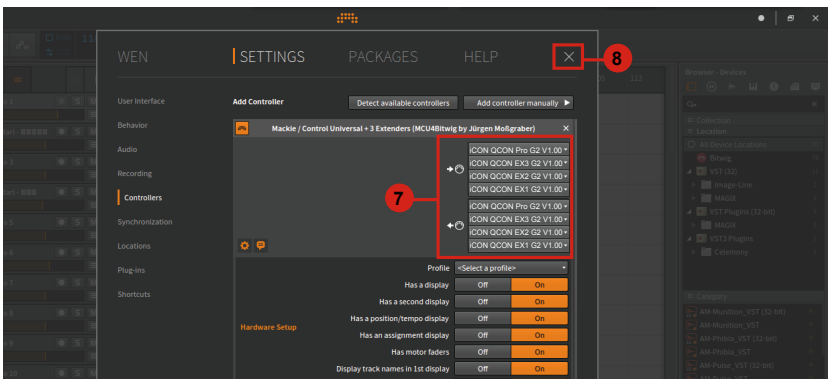
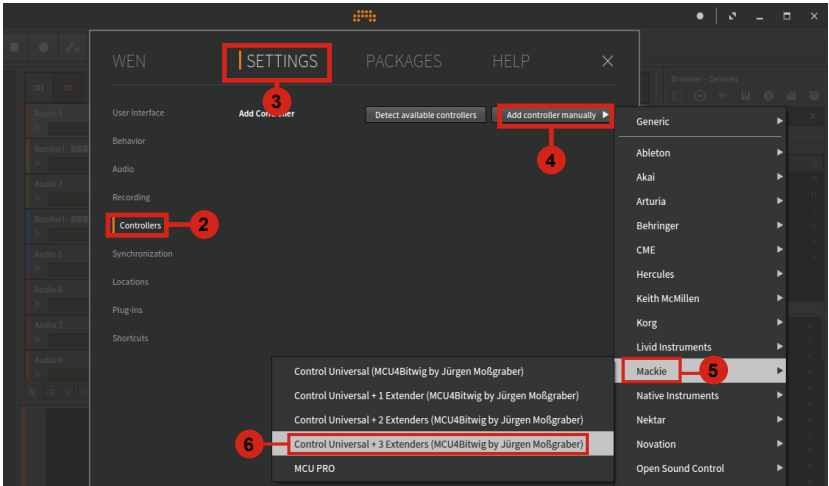
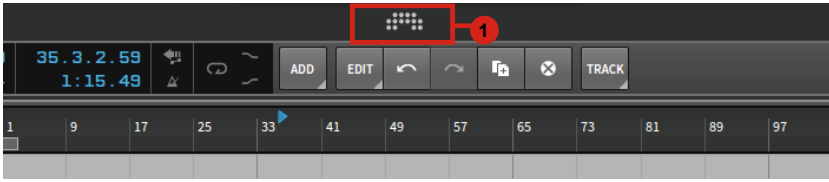
(Tips: You may also refer to our website at www.iconproaudio.com, where you'll find set up illustrations for different DAW's in each controller (QconPro G2) product page's "Setup demo" section.

For DAW's not on our setup demo list, please refer to your software user manual for hardware setup.)

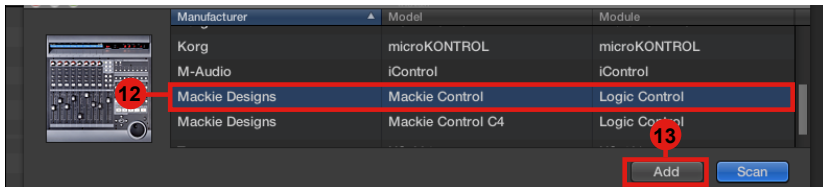
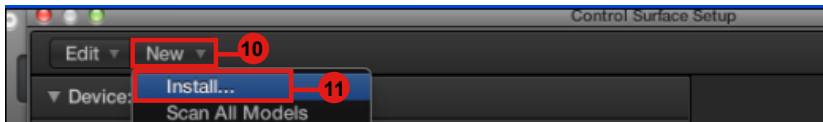
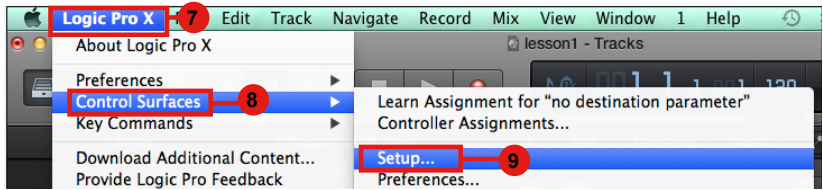
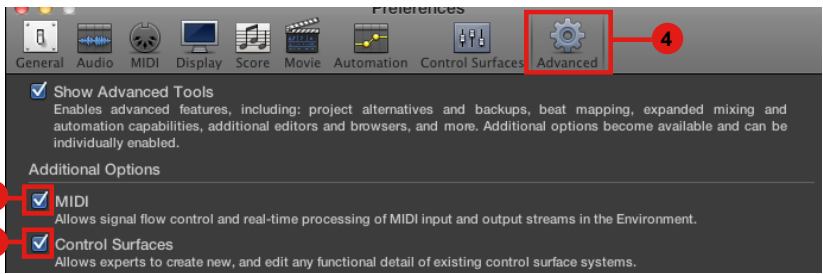
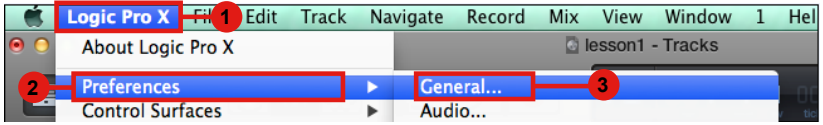
Cubase

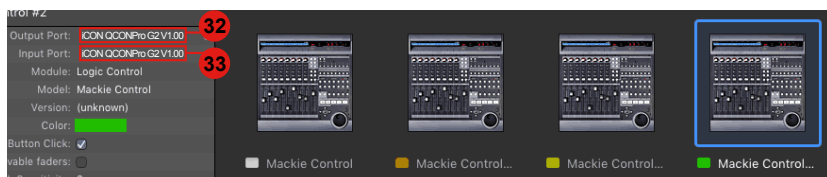
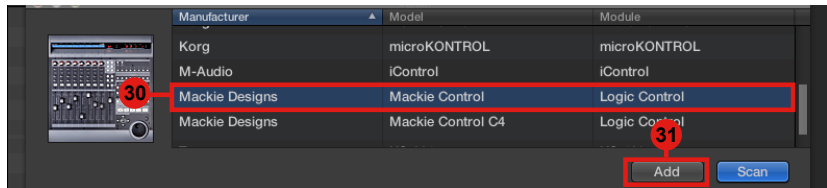
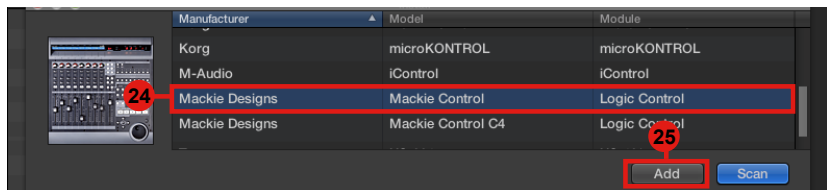
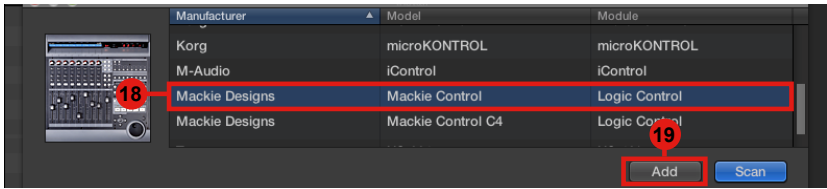




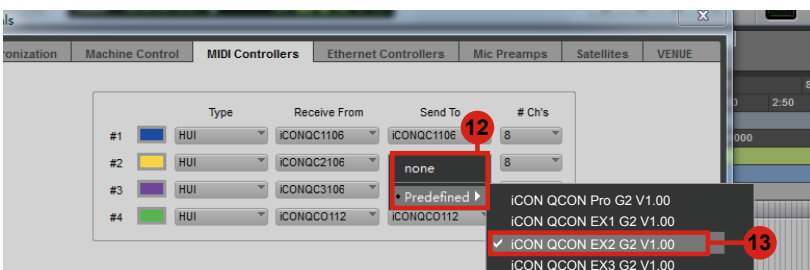
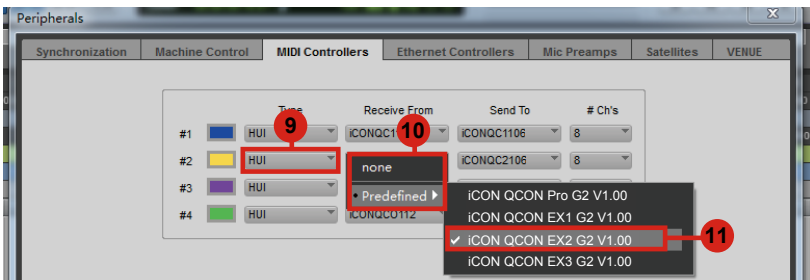
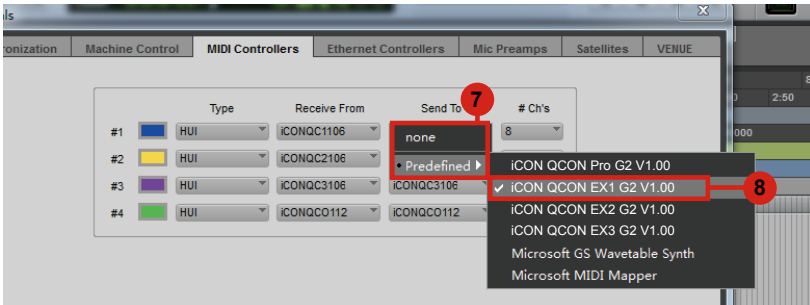
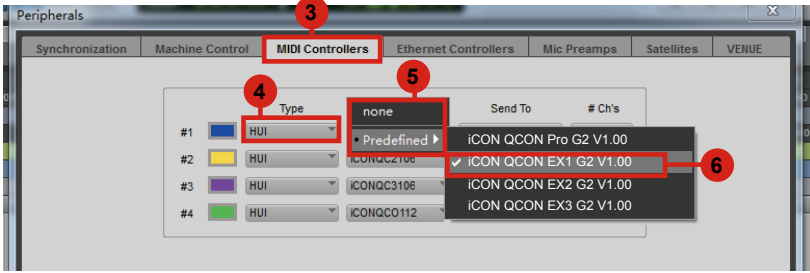
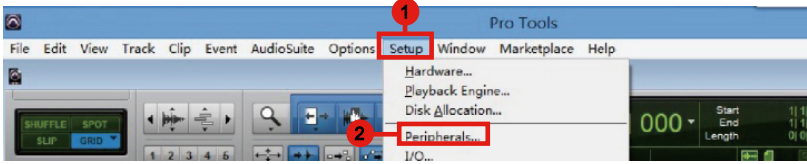


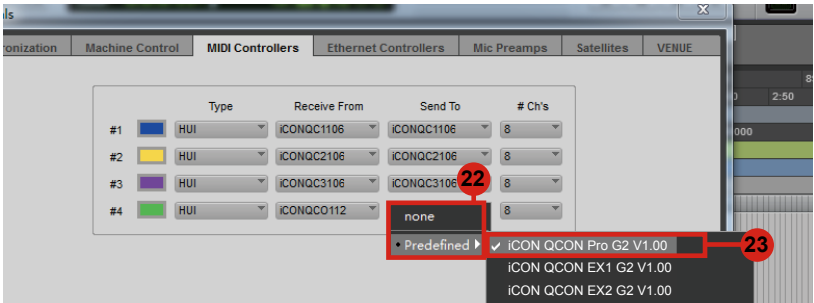
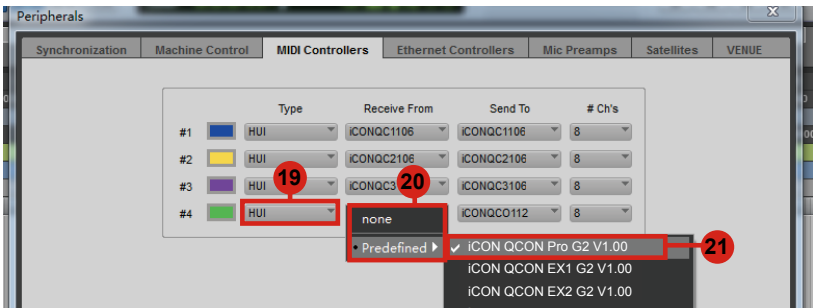
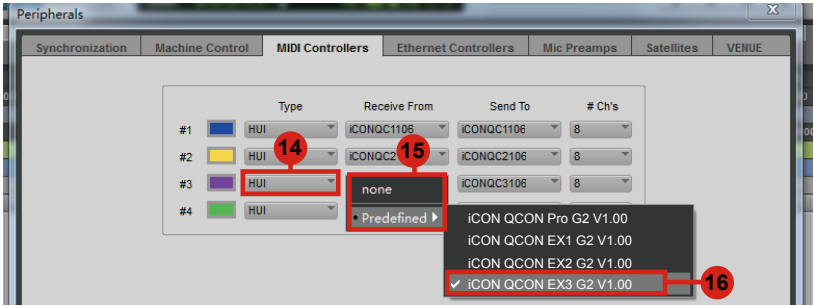
Logic Pro



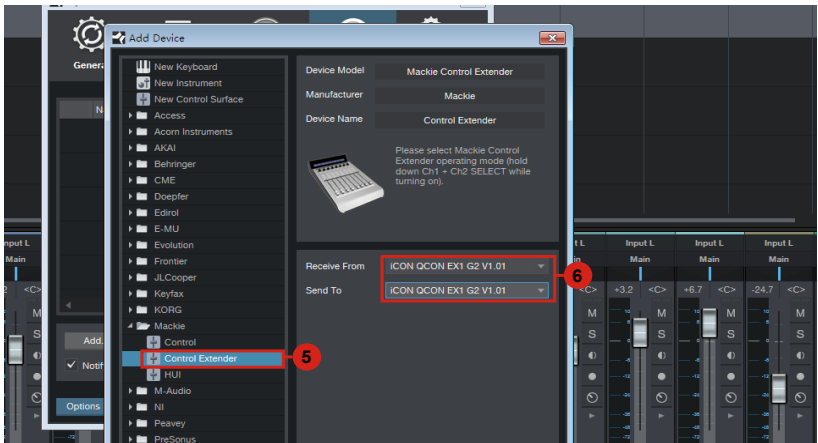
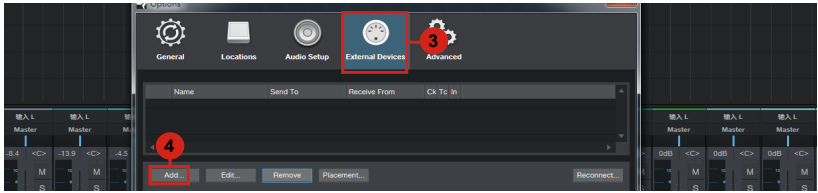
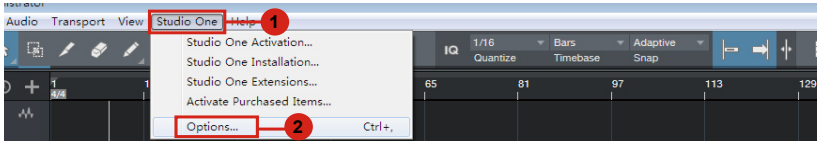


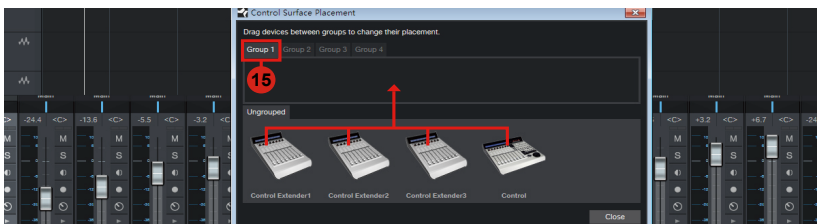
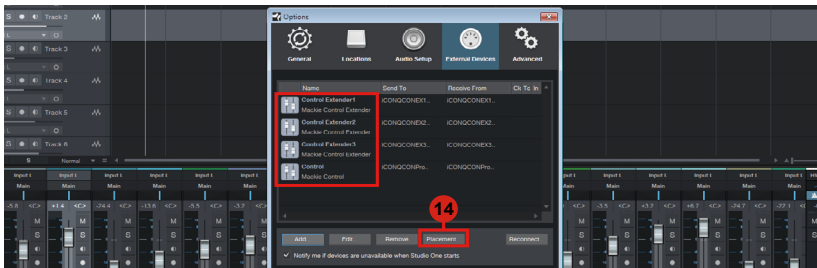
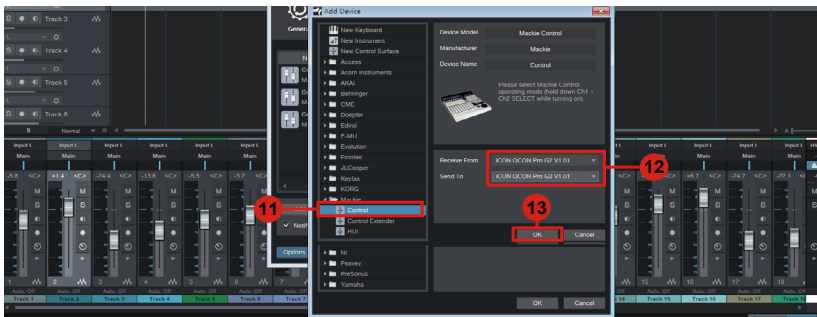
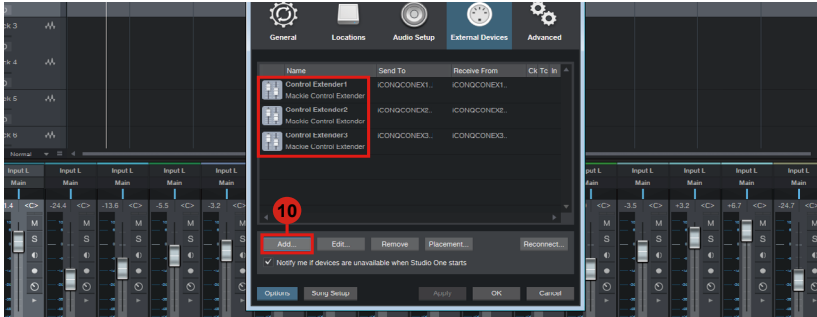
Pro Tools

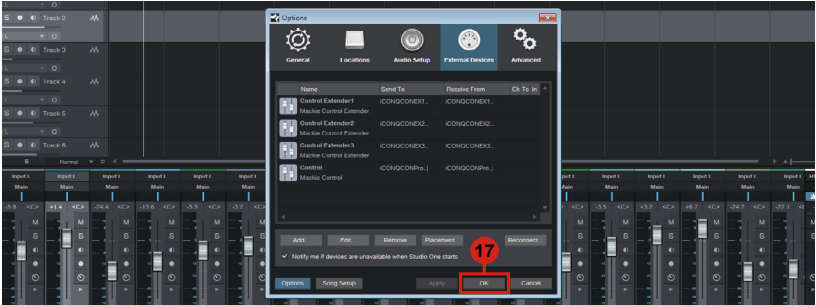
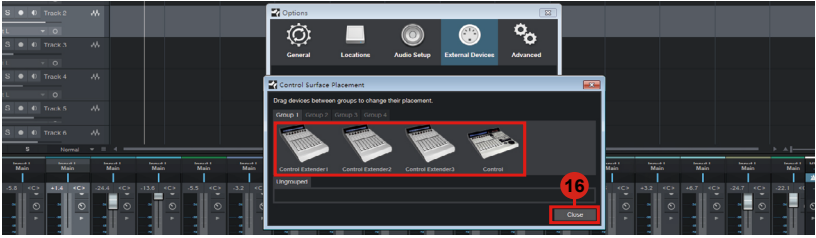




Studio One







Getting Started (Standalone device)

Connecting Your QconPro G2 Controller



1 Connect the QconPro G2 to your Mac/PC via the USB port
Choose a USB port on your Mac/PC and insert the wide (flat) end of the USB cable. Connect the cable's other end to the QconPro G2. Your Mac/PC should automatically “detect” the new hardware and notify you that it is ready to use.

2 Select the DAW
Press <</>> to scroll through the mode list after pressed the “DAW” button to make the selection.

DAW select: Press “<<” & “>>” to select your DAW.
(1): Mackie Control



Tips: QconPro G2 will memorize your last selected mode and re-enter the same mode few seconds after it's been switched on. (i.e. mode selection is not needed if last mode is being used.)

3 Setup your DAW

The QconPro G2 has built-in Mackie Control, Logic Pro and HUI protocol which will save you considerable trouble in setting up the device at your DAW. Simply add the “Mackie Control” or “HUI” device under the “MIDI Controller” on your software. After the Mackie Control or HUI device has been added, select QconPro G2 controller as your MIDI input and output device in your DAW.

For the software below, please use Mackie Control

Nuendo/Cubase™, Logic Pro™, Samplitude™, Bitwig™, Reason™, Reaper™, Studio One™ and Ableton Live™.

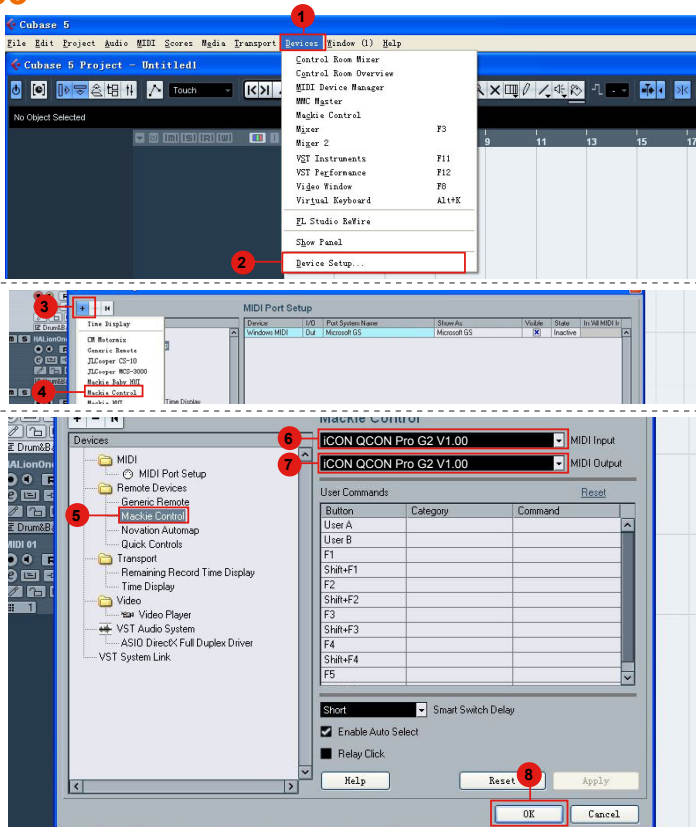
The software below, please use Logic Pro Mackie Control Logic Pro For the software below Logic Pro

or the software below, please use HUI Pro Tools™.

(Tips: You may also refer to our website at www.iconproaudio.com, where you'll find set up illustrations for different DAW's in each controller (QconPro G2) product page's "Setup demo" section.

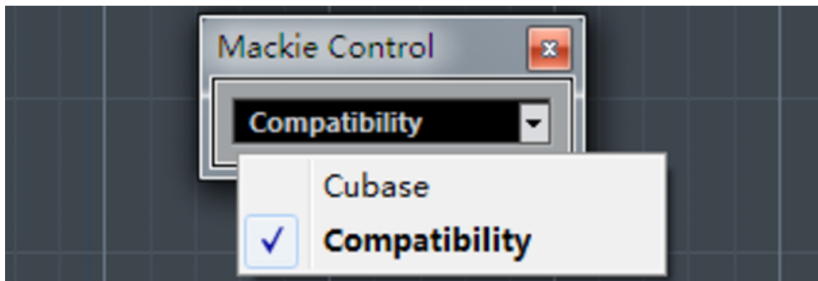
For DAW's not on our setup demo list, please refer to your software user manual for hardware setup.)

Cubase

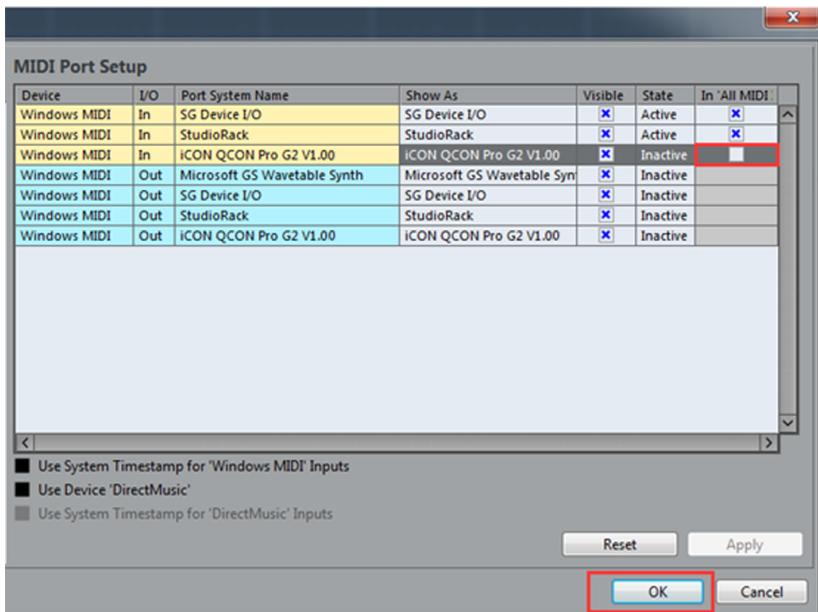
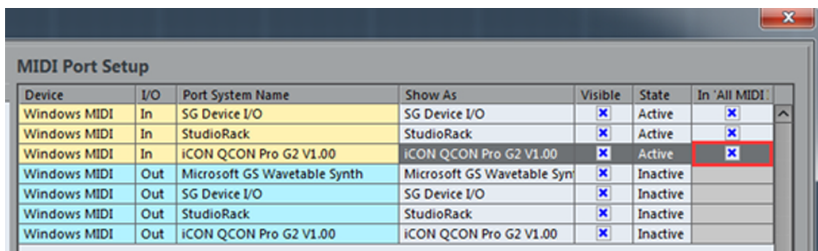


Note:

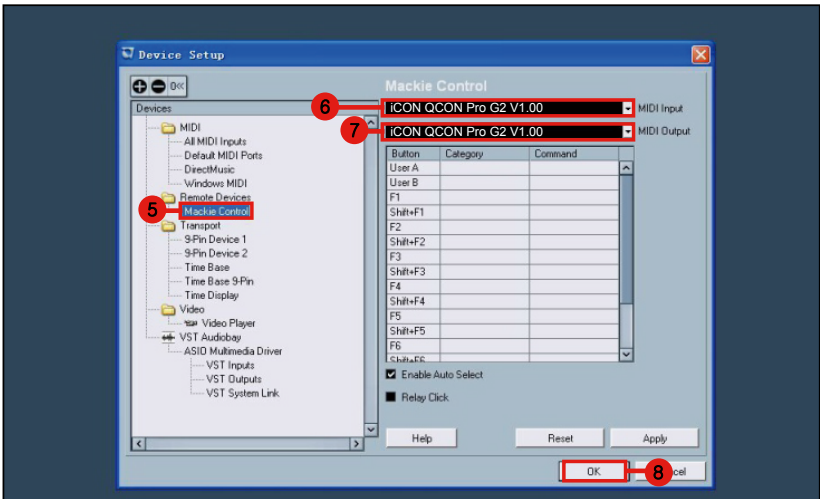
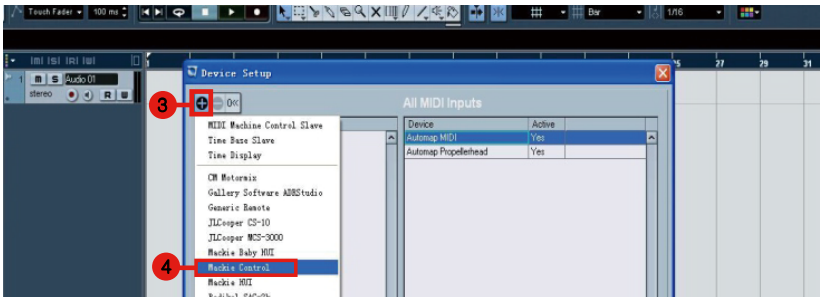
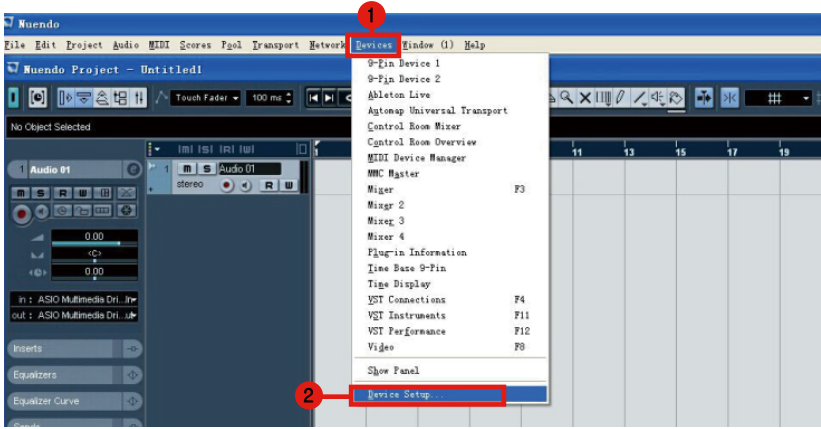
- 1..Cubase Compatibility Mode
Devices ---> Mackie Control



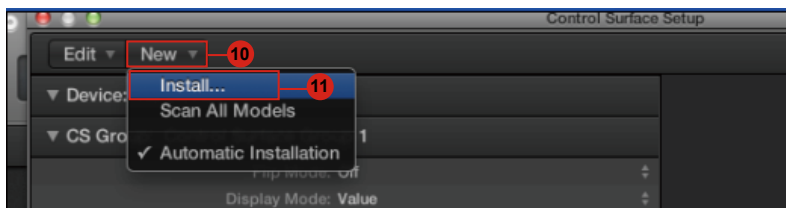
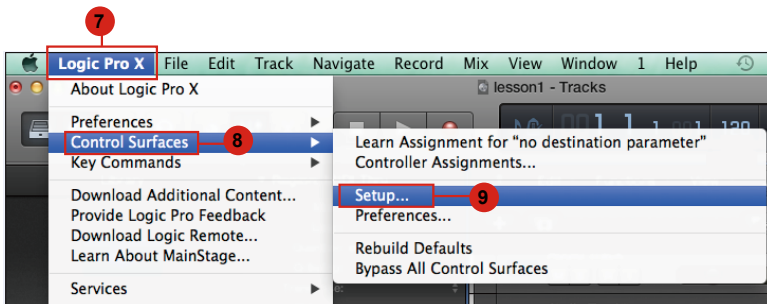
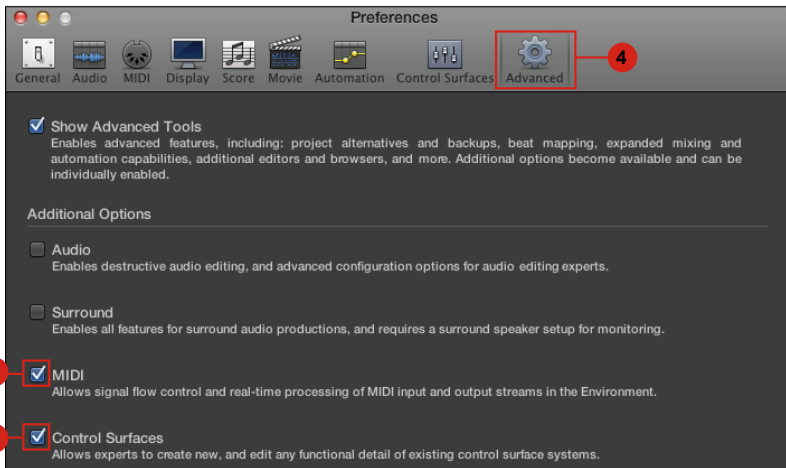
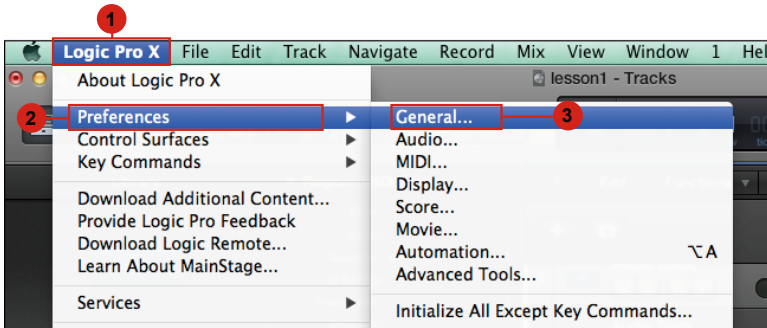
- 2..Cubase Setup MIDI note problem
Devices --> Devices Setup ---> MIDI Port Setup

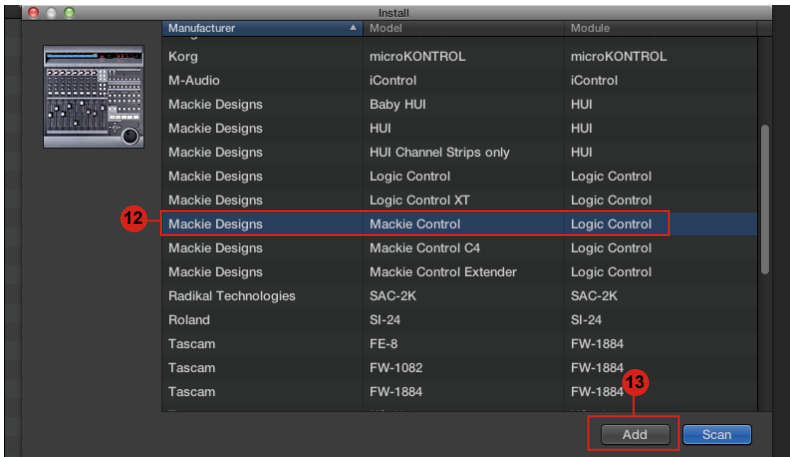


Nuendo

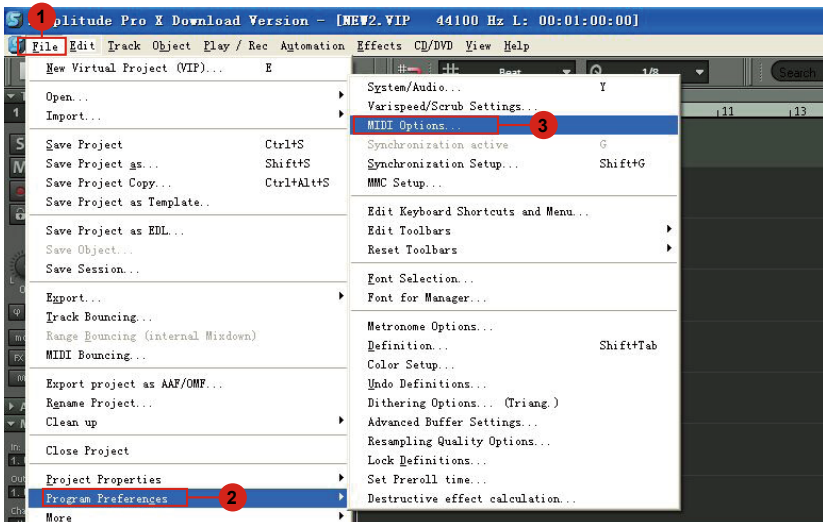


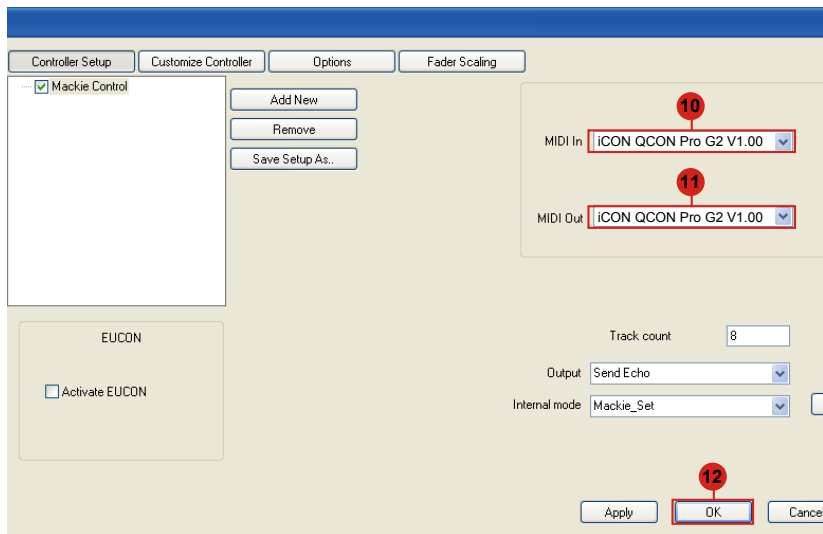
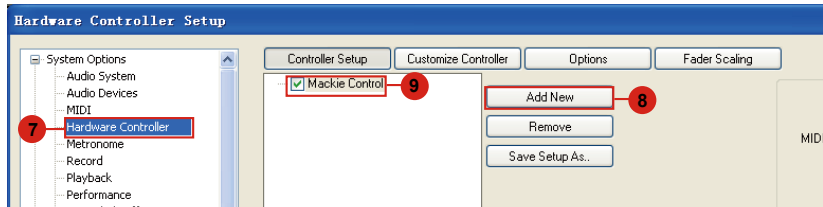
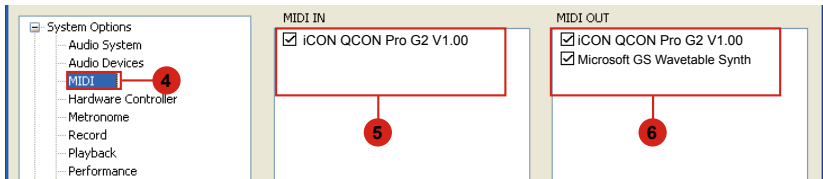
Logic Pro

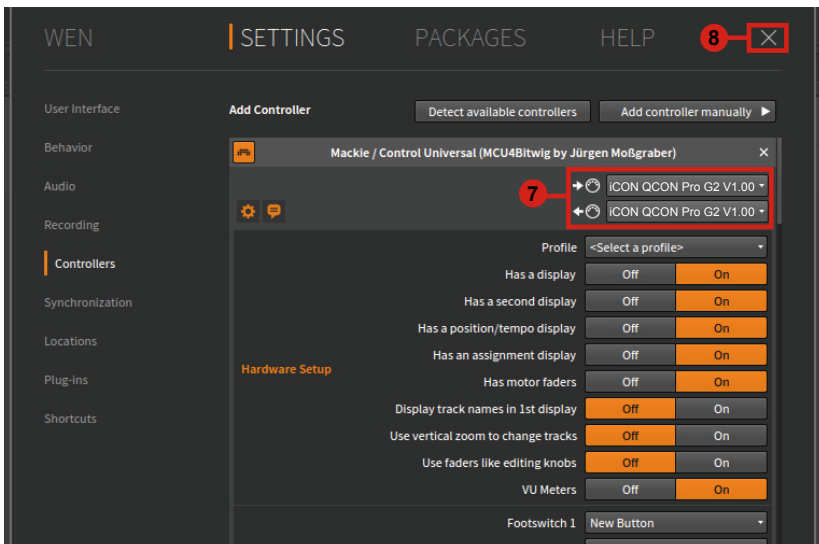
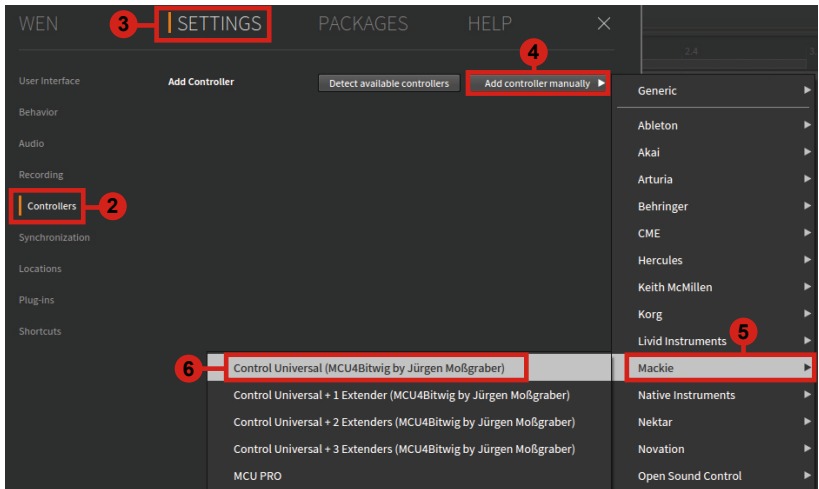
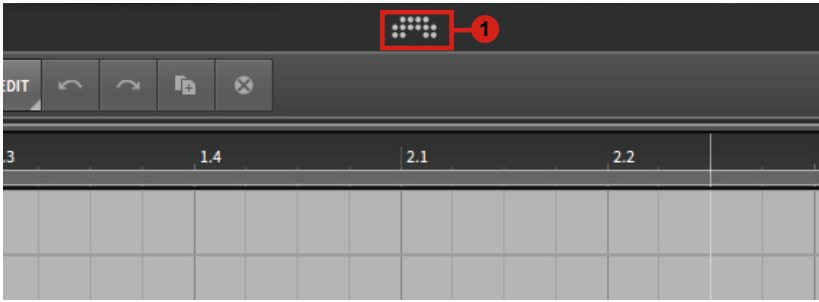




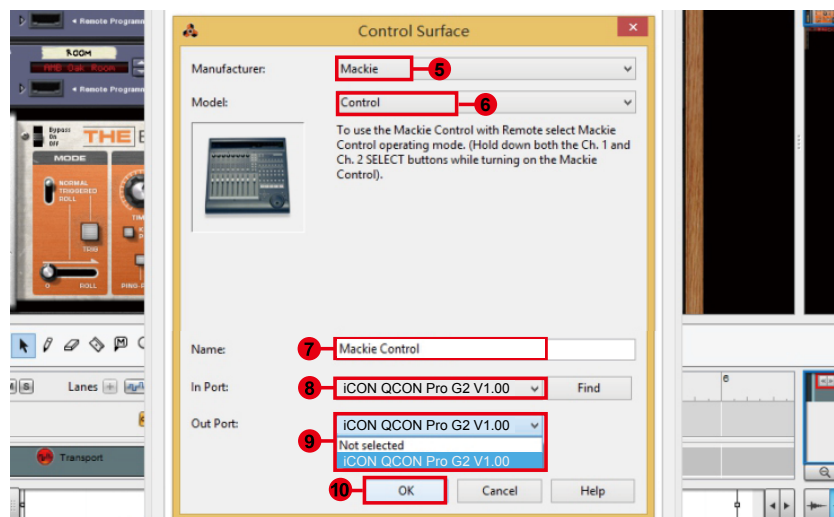
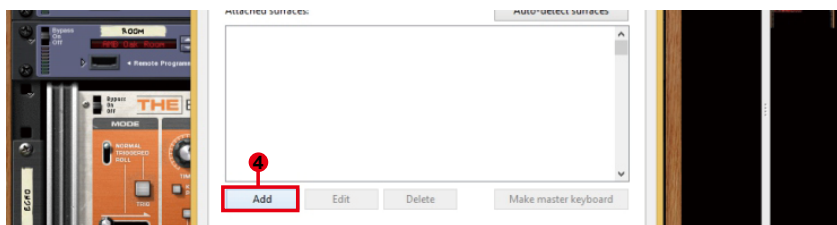
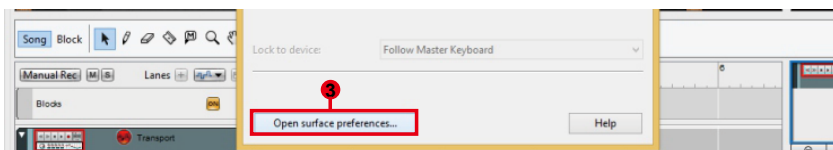
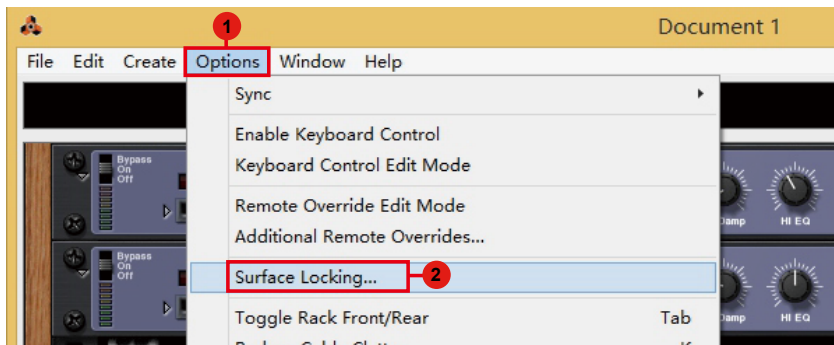
Samplitude



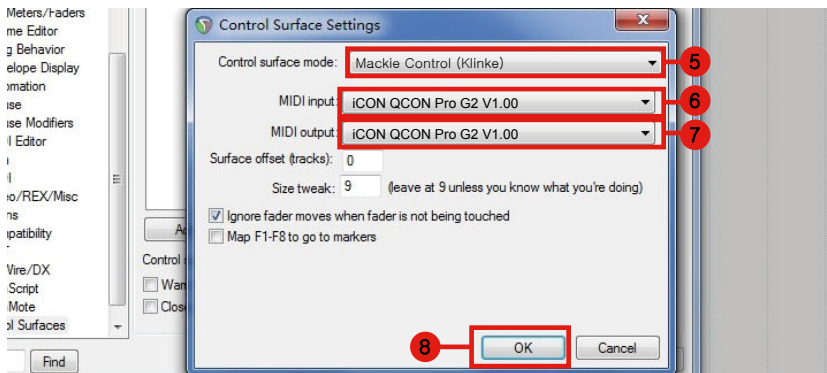
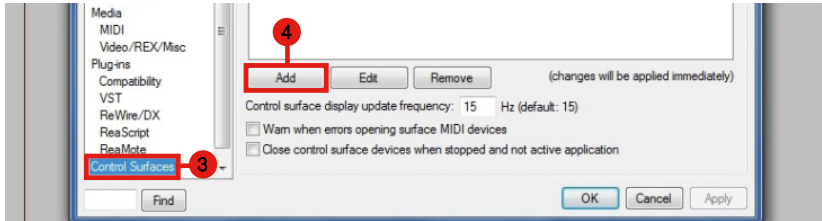
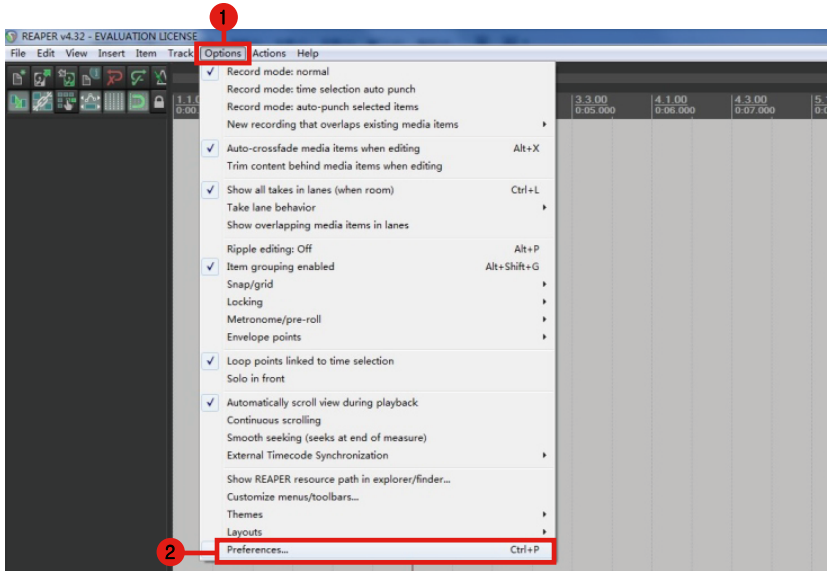




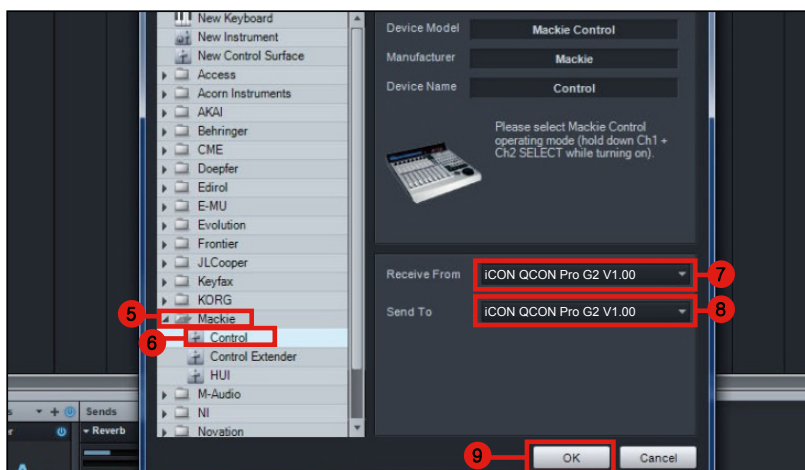
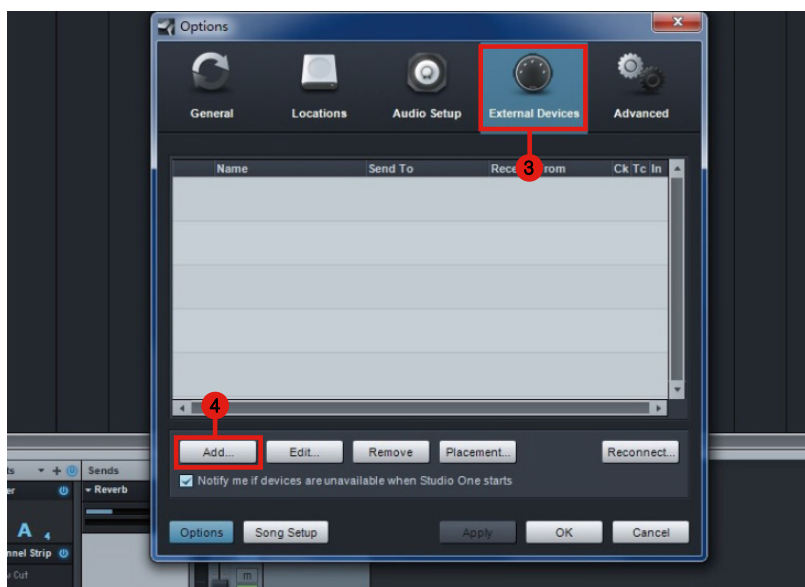
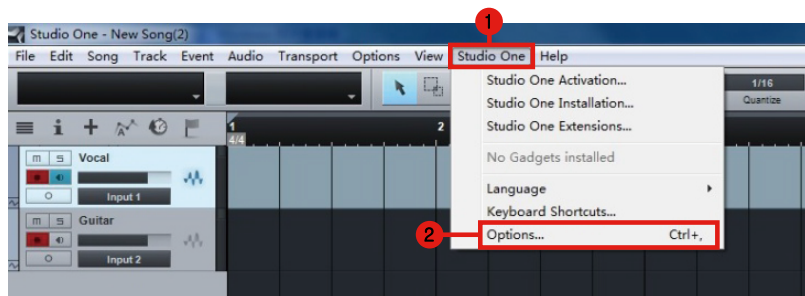
Reason



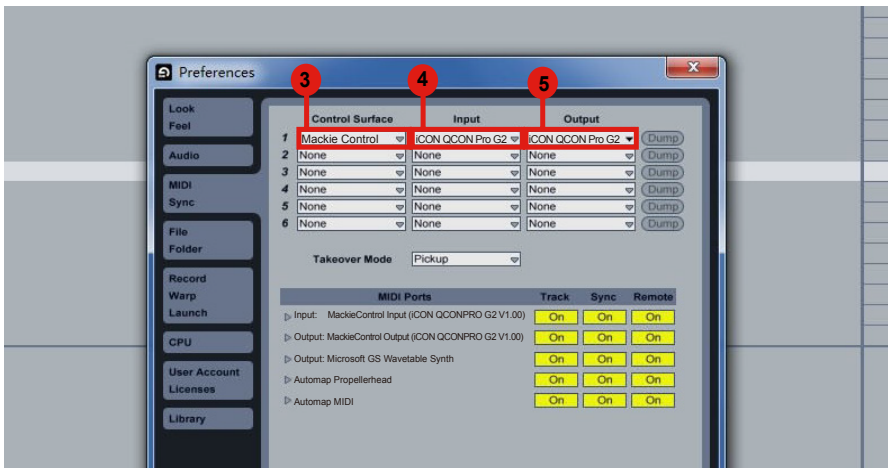
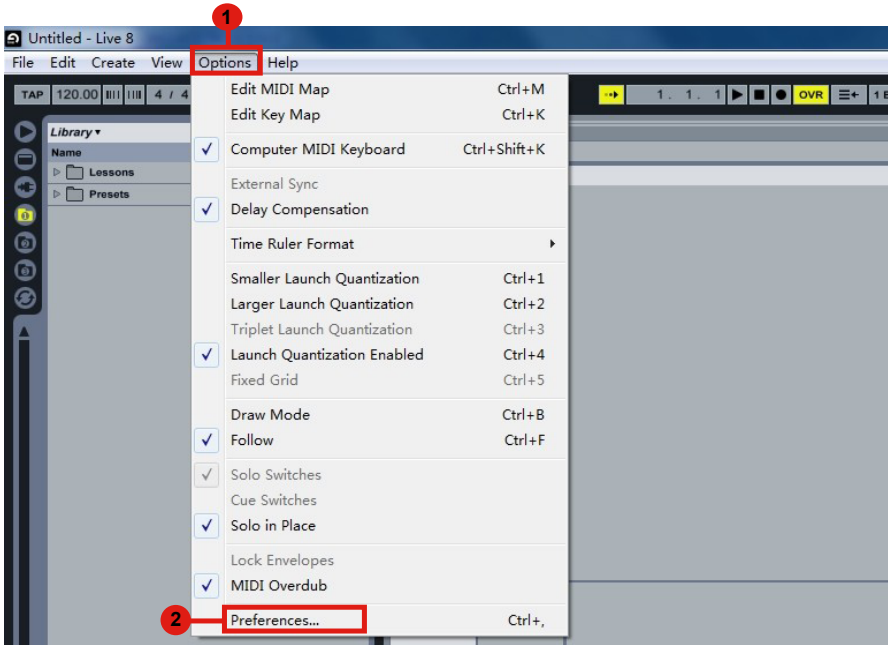
Reaper



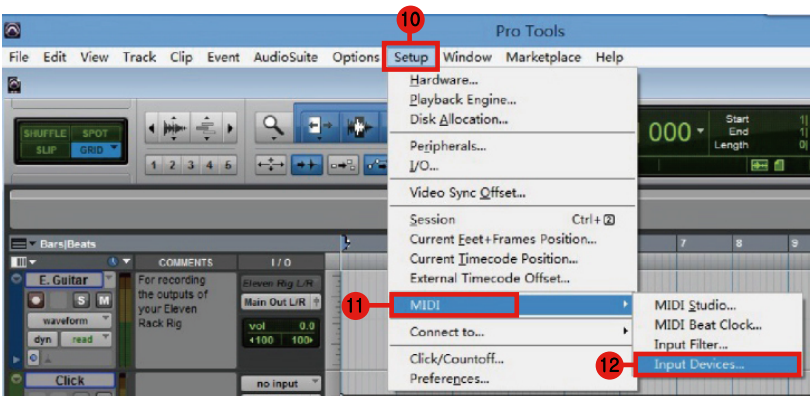
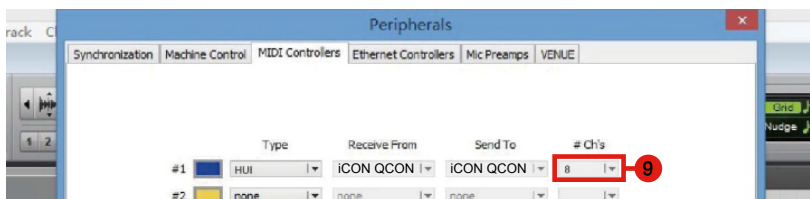
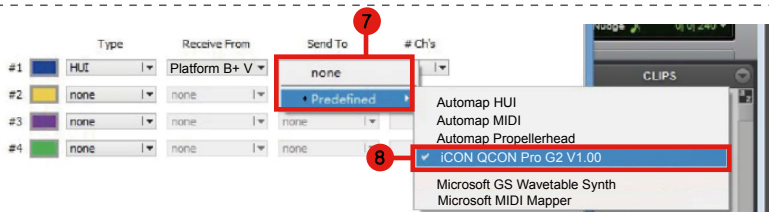
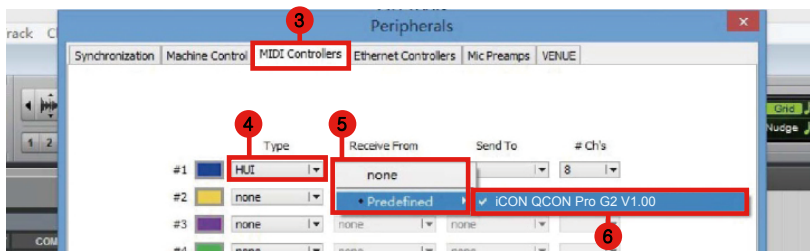
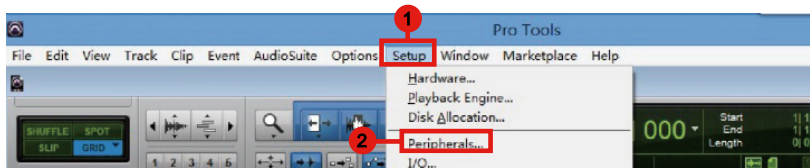
Studio One

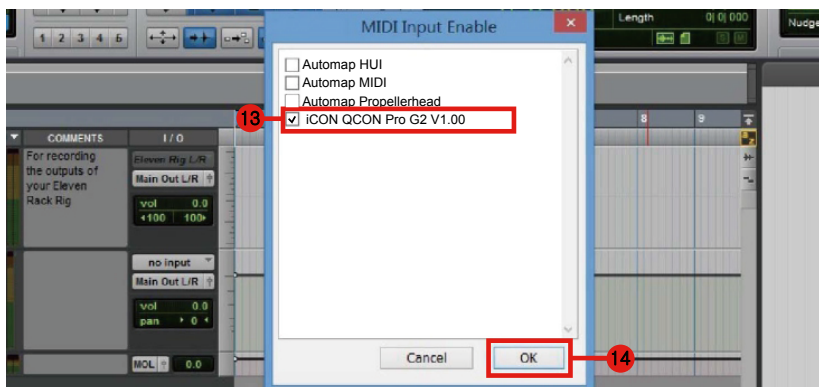


Ableton Live

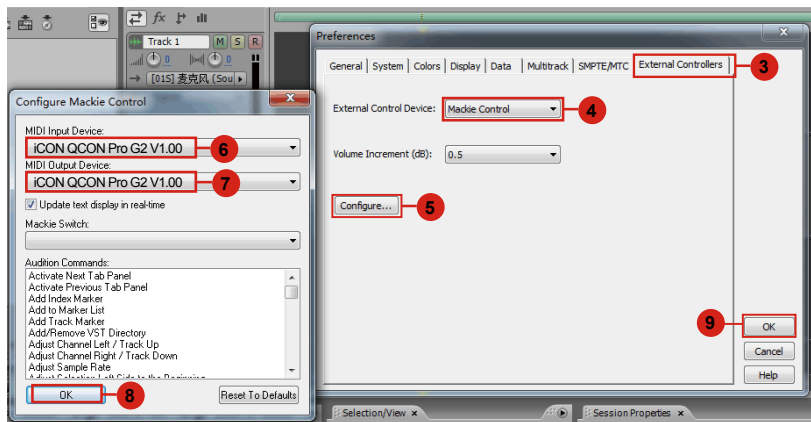
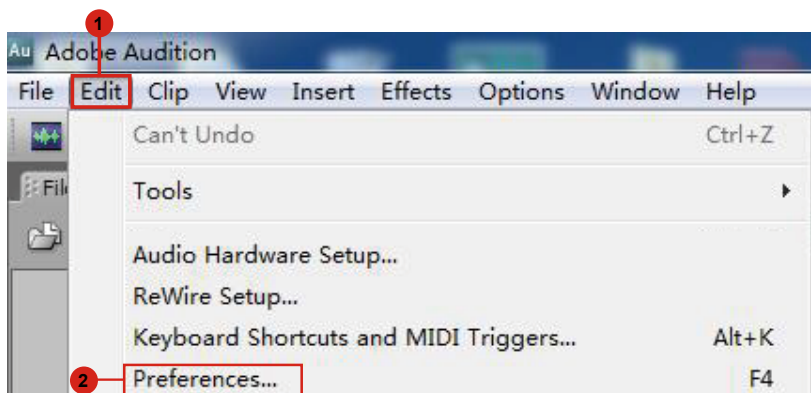


Pro Tools

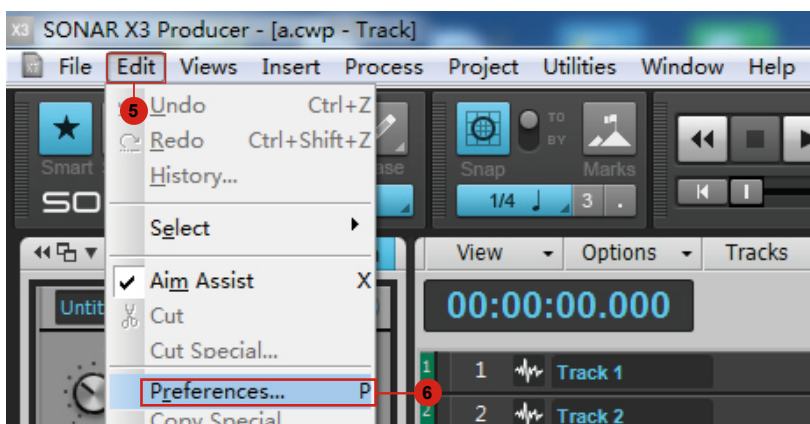
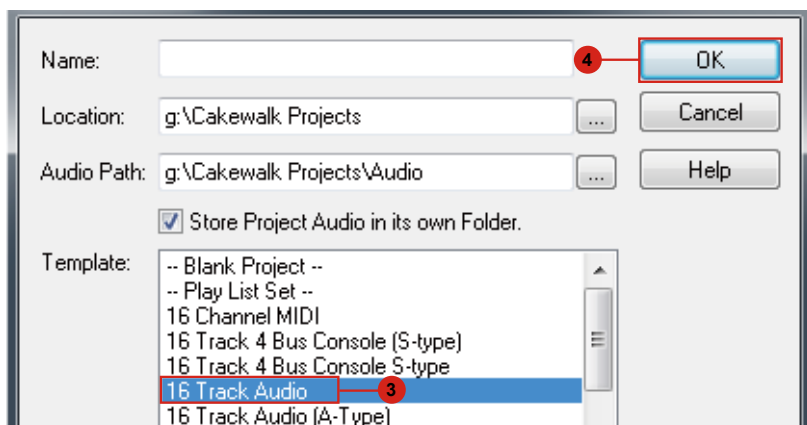
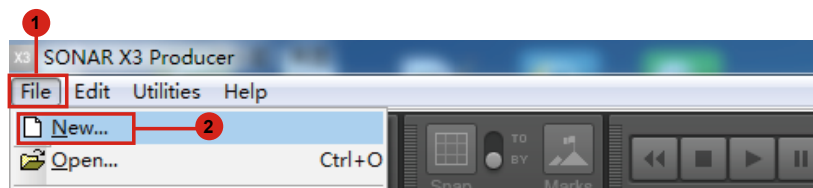


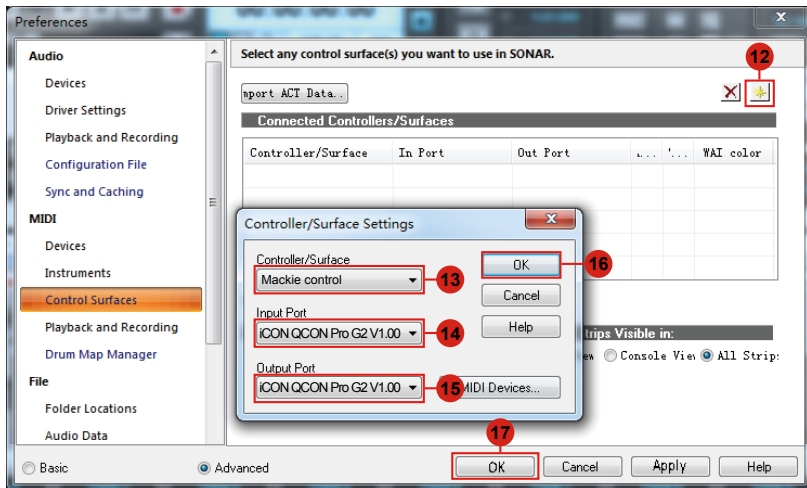
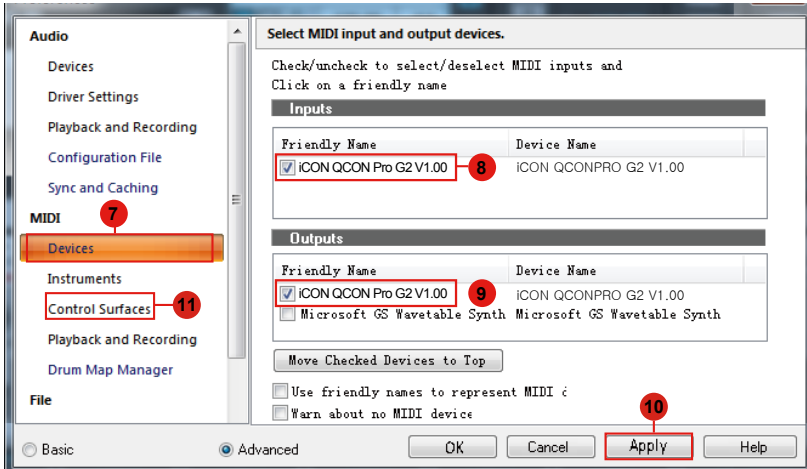


Audition

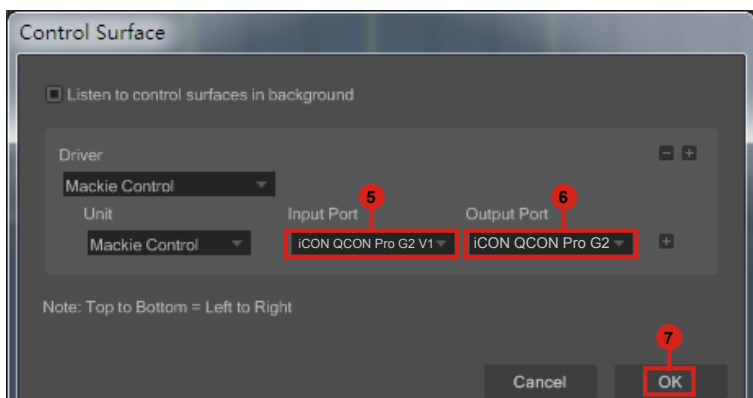
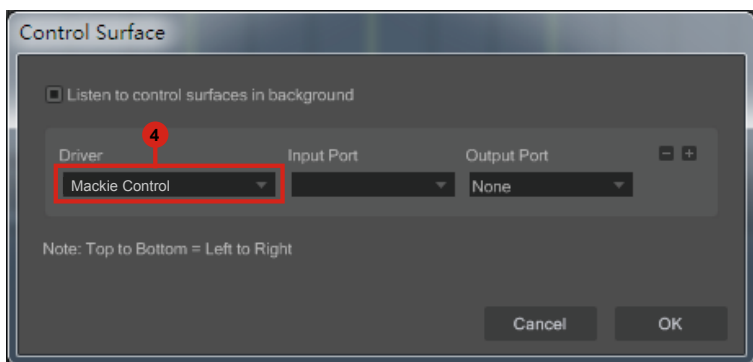
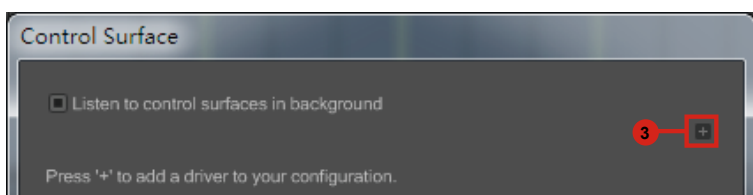
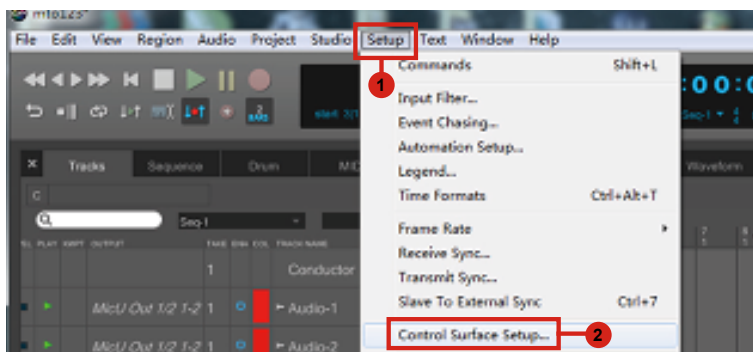


Sonar

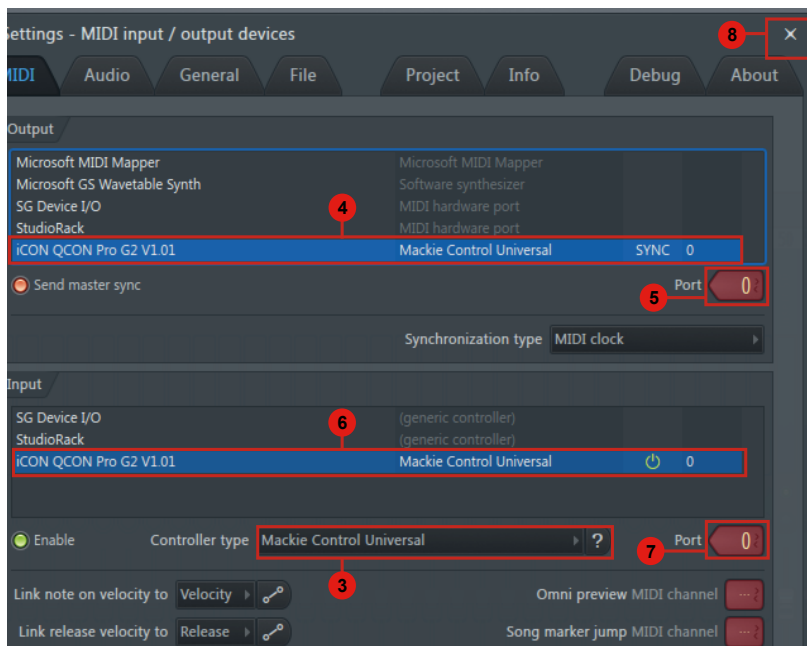
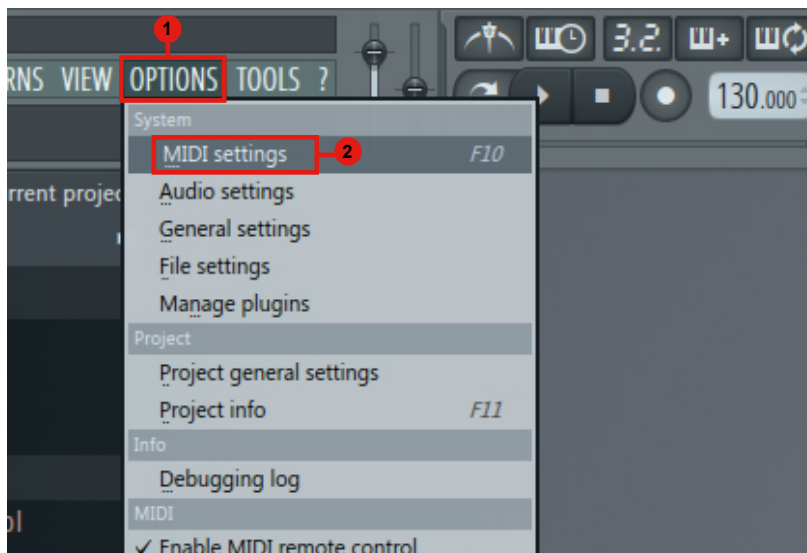




Digital Performer

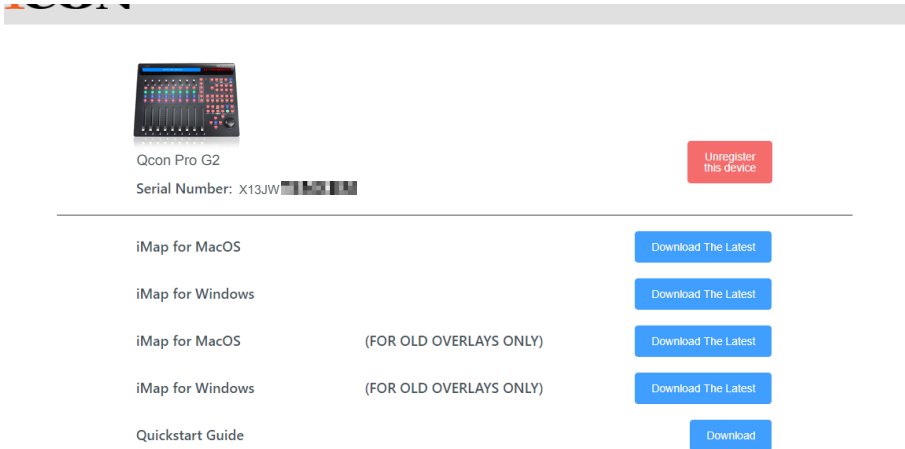


FL-Studio



Download the Mac iMap from your Personal User Page at www.iconproaudio.com

After you downloaded the file, please click it to start the installation process.



The screenshot shows the product page for the Qcon Pro G2. At the top left is an image of the device. Below it, the text reads "Qcon Pro G2" and "Serial Number: X13JW". To the right is a red button that says "Unregister this device". Below this is a horizontal line. Underneath the line, there are five rows of links. The first row is "iMap for MacOS" with a blue button "Download The Latest". The second row is "iMap for Windows" with a blue button "Download The Latest". The third row is "iMap for MacOS (FOR OLD OVERLAYS ONLY)" with a blue button "Download The Latest". The fourth row is "iMap for Windows (FOR OLD OVERLAYS ONLY)" with a blue button "Download The Latest". The fifth row is "Quickstart Guide" with a blue button "Download".

Diagram 1

1. iMap™ Software for Mac OS X

Please follow the procedures below step-by-step to launch your iMap™ software to Mac OS X.

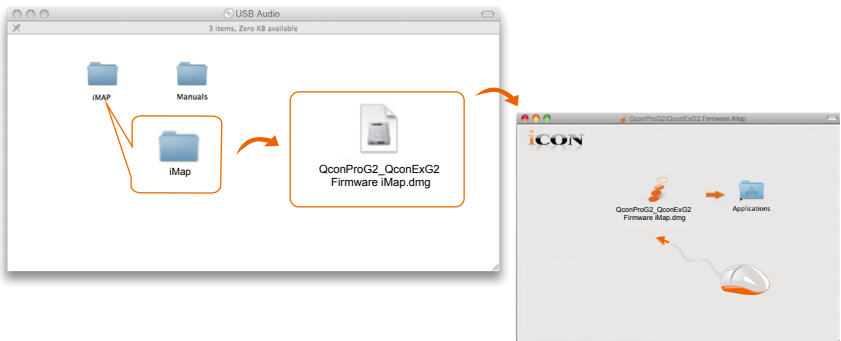


Diagram 2

Tip: By “drag and drop” the “QconPro G2” icon into the “Applications” folder, you could create a “iMap” shortcut on your Mac’s desktop.

Installing iMap™ Software for Windows

Please follow the procedures below step-by-step to install your iMap™ software.

1. Turn on your PC.

2. Download the Windows iMap from your Personal User Page at www.iconproaudio.com

After you downloaded the file, please click it to start the installation

3. Choose Install Location

Choose your preferred install location for iMap™ or use the default location and click “Next”.

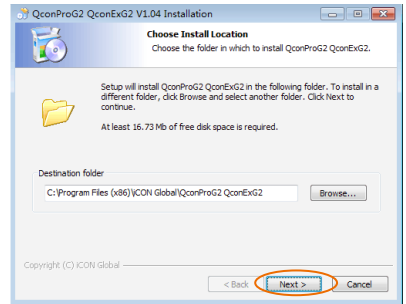


Diagram 3

4. Select shortcut

Select the start menu folder in which you would like to create the iMap™ shortcut. Then click “Next”.

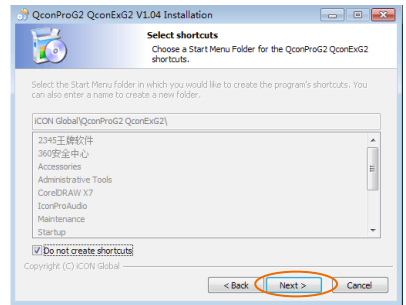


Diagram 4

5. Create a shortcut on your desktop

Please untick the box if you do not want to place a shortcut icon on your desktop for iMap™, otherwise click “Install”.



Diagram 5

6. iMap™ started to install

The iMap™ installation has now started, wait for it to finish. Then click “Finish”.



Diagram 6

7. Click the iMap logo on your desktop to launch the iMap software.

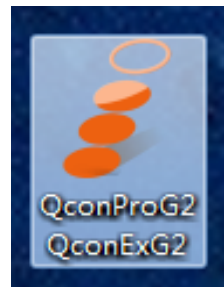
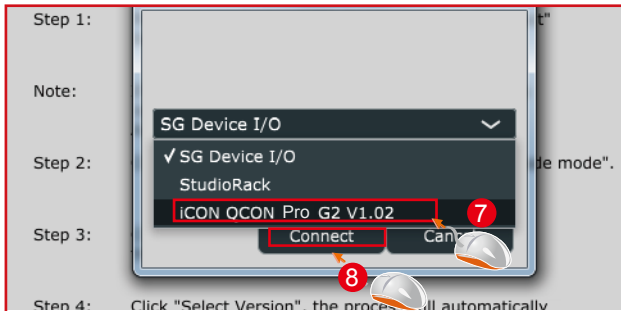
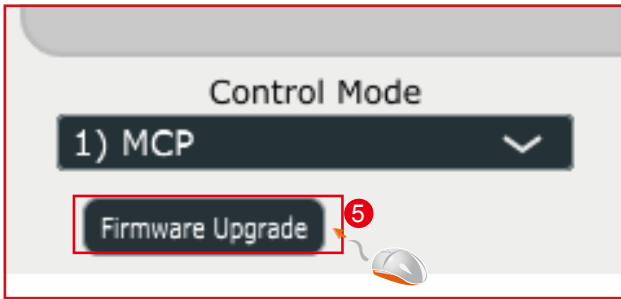
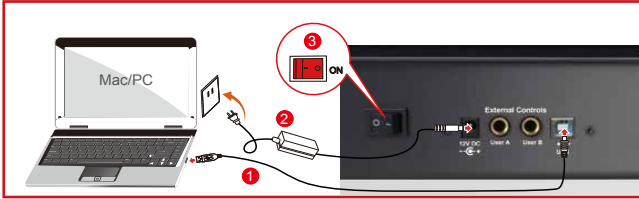
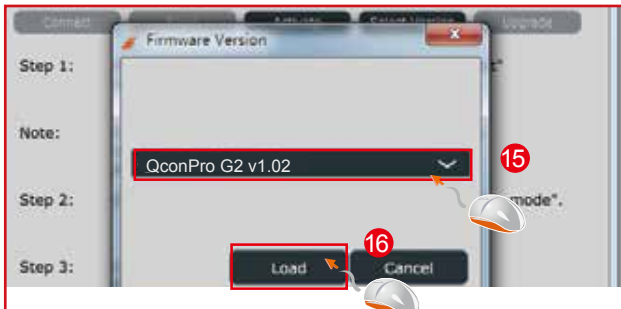
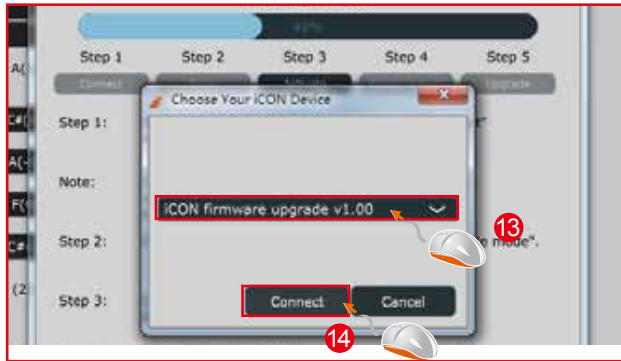
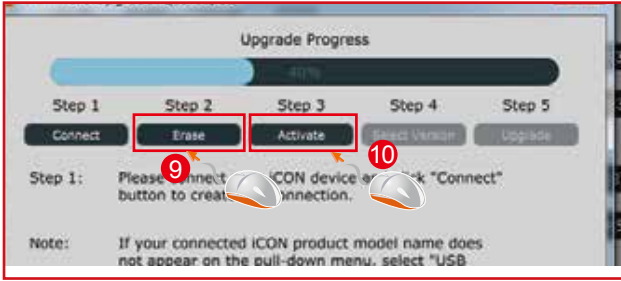


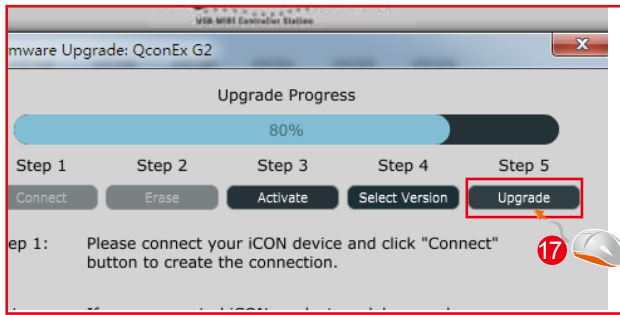
Diagram 7

Firmware upgrade

QconPro G2 functional firmware upload procedure







Restore the factory default settings

To restore your QconPro G2 settings to factory default, simply launch iMap and import the original settings (i.e. without making any changes) to the device through the following steps.

1. Connect QconPro G2 with the provided USB cable and launch iMap software.
2. Click the "MIDI Device" button and select "QconPro G2" as the MIDI input and output device.
Note: *If QconPro G2 does not appear on the pull down menu, select USB audio as the MIDI I/O device.*
3. Click "Send Data" to upload the setting to your QconPro G2.
4. Close iMap, and then turn the QconPro G2 power of off & on again.

Specifications

Connector:	To computer	USB connector (standard type)
	To extender	USB connector (B-Type)
Power supply:		12V/2.5A DC
Current consumption:		2A or less
Weight:		6.6kg (14.6lb)
Dimensions:		510(L) x 375(W) x 136(H)mm
		20.1”(L) x 14.76”(W) x 5.35”(H)

Services

If your QconPro G2 needs servicing, follow these instructions.

Check our online help centre at <http://support.iconproaudio.com/hc/en-us>, for information, knowledge, and downloads such as:

1. FAQ
2. Download
3. Learn More
4. Forum

Very often you will find solutions on these pages. If you don't find a solution, create a support ticket at our online Help Center at the link below, and our technical support team will assist you as soon as we can.

Navigate to <http://support.iconproaudio.com/hc/en-us> and then sign in to submit a ticket.

As soon as you have submitted an inquiry ticket, our support team will assist you to resolve the problem with your ICON ProAudio device as soon as possible.

To send defective products for service:

1. Ensure the problem is not related to operation error or external system devices.
2. Keep this owner's manual. We don't need it to repair the unit.
3. Pack the unit in its original packaging including end card and box. This is very important. If you have lost the packaging, please make sure you have packed the unit properly. ICON is not responsible for any damage that occurs due to non-factory packing.
4. Ship to the ICON tech support center or the local return authorization. See our service centers and distributor service points at the link below:

If you are located in US

Send the product to:

North America

**Mixware, LLC – U.S. Distributor
11070 Fleetwood Street – Unit F.**

Sun Valley, CA 91352; USA

Tel.: (818) 578 4030

Contact: www.mixware.net/help

If you are located in Europe

Send the product to:

Sound Service

GmbH European

Headquarter Moriz-Seeler-Straße

3D-12489 Berlin

Telephone: +49 (0)30 707 130-0

Fax: +49 (0)30 707 130-189

E-Mail: info@sound-service.eu

If you are located in Hong Kong

Send the product to:

ASIA OFFICE:

**Unit F, 15/F., Fu Cheung Centre,
No. 5-7 Wong Chuk Yueng Street,**

Fotan,

Sha Tin, N.T., Hong Kong.

Tel: (852) 2398 2286

Fax: (852) 2789 3947

Email: info.asia@icon-global.com

5. For additional update information please visit our website at:

www.iconproaudio.com



天猫官方旗舰店



天猫店iconproaudio旗舰店

抖音号



抖音iCON艾肯

哔哩哔哩



B站iCONProAudio

微信公众号



微信号iCON-PRO

官方售后QQ



4006311312.114.qq.com

中国地区用户

Twitter



www.twitter.com/iconproaudio

Instagram



www.instagram.com/iconproaudio

Facebook



www.facebook.com/iconproaudio

Youtube



www.youtube.com/iconproaudio

Website



www.iconproaudio.com

Support



support.iconproaudio.com

Dashboard



iconproaudio.com/dashboard/

www.iconproaudio.com